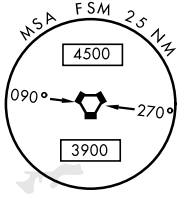
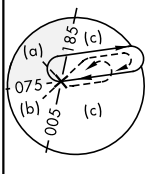
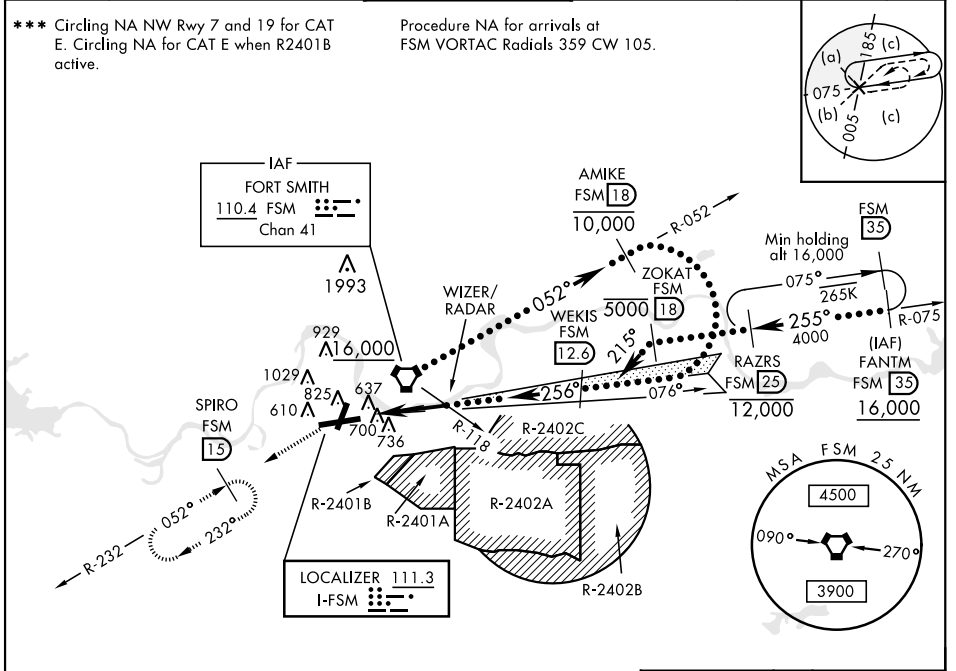


HI-ILS or LOC RWY 25

LOC I-FSM 111.3	APCH CRS 256°	Rwy ldg TDZE Arprt Elev 8017 453 469	JAL-631 [USAF]	FORT SMITH REGIONAL (KF5M)	
* When ALS inop, increase CAT E RVR to 40. ** When ALS inop, increase CAT CDE vis to 1 1/2 miles. NA when control tower closed.		MALSR 	MISSED APPROACH: Climb to 1400 then climbing left turn to 4000 via heading 220° and FSM VORTAC R-232 to SPIRO (15 DME) and hold, continue climb in hold to 4000.		
ATIS * 126.3	RAZORBACK APP CON 120.9 343.75	FORT SMITH TOWER * 118.3 (CTAF) 323.175	GND CON 121.9 275.8	CLNC DEL 133.85 278.3	ASR

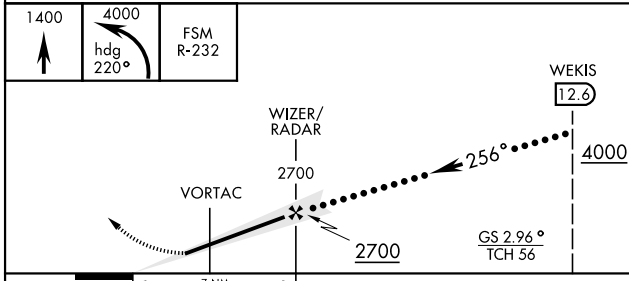


SC-1, 25 MAR 2021 to 22 APR 2021

SC-1, 25 MAR 2021 to 22 APR 2021

DME REQUIRED

EMERG SAFE ALT 100 NM 4500 FROM FSM VORTAC



ELEV 469	TDZE 453
618 A 256° 7 NM from FAF 500 A 741 A 696 A 501 A 583 A 8017 x 150 3007 x 120 0.3% UP TW5 TW9 TW531	
MRL Rwy 1-19 HIRL Rwy 7-25	
FAF to MAP 7 NM	
Knots	120 140 160 180 200
Min:Sec	3:30 3:00 2:38 2:20 2:06

CATEGORY	C	D	E
S-ILS *	653/24	200	(200-1/2)
S-LOC **	1020-1 1/4	567	(600-1 1/4)
CIRCLING ***	1400-2 3/4 931 (1000-2 3/4)	1400-3	931 (1000-3)

HI-ILS or LOC RWY 25