

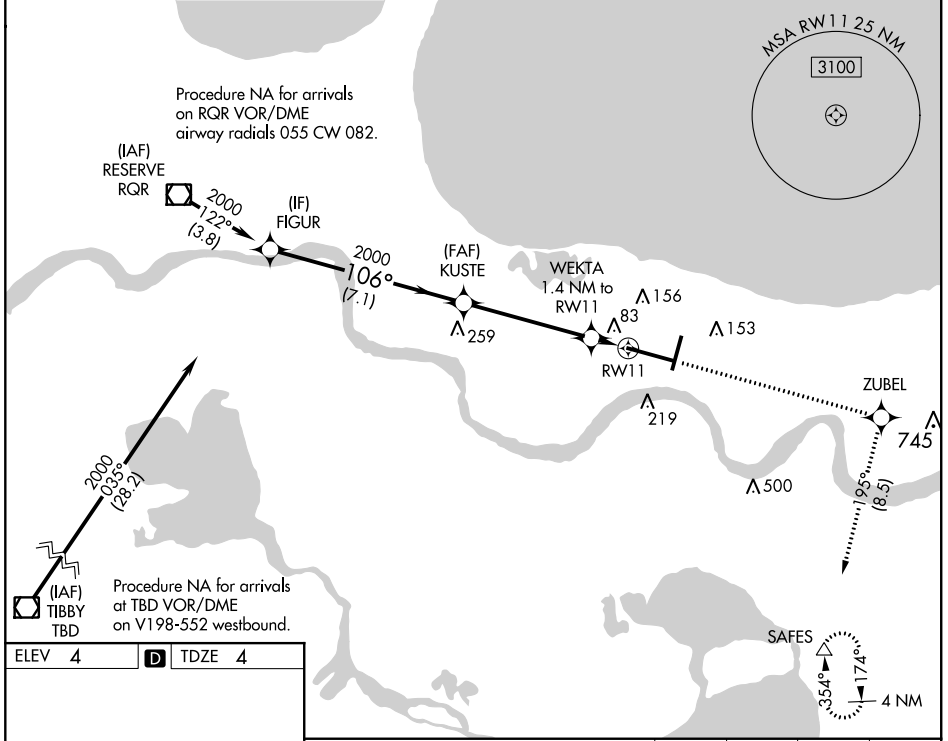
WAAS CH 61319 W11A	APP CRS 106°	Rwy Idg TDZE Apt Elev	9800 4 4
--	------------------------	-----------------------------	-------------------------------------

RNAV (GPS) Y RWY 11

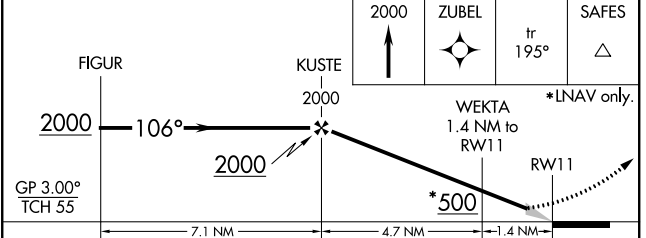
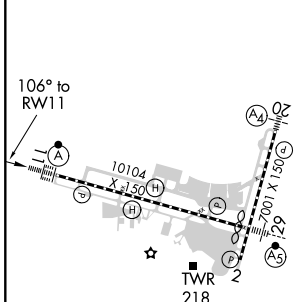
LOUIS ARMSTRONG NEW ORLEANS INTL (MSY)

<p>▽ For uncompensated Baro-VNAV systems, LNAV/VNAV NA below -1°C (31°F) or above 54°C (130°F). DME/DME RNP-0.3 NA. For inop ALSF-2, increase LNAV/VNAV all Cats visibility to RVR 4000.</p>	<p>ALSF-2</p>	<p>MISSED APPROACH: Climb to 2000 direct ZUBEL and on track 195° to SAFES and hold.</p>
---	---------------	---

D-ATIS 127.55	NEW ORLEANS APP CON WEST 125.5 350.35 EAST 133.15 290.3	NEW ORLEANS TOWER 119.5 254.3	GND CON 121.9 273.525	CLNC DEL 126.575	CPDLC
-------------------------	---	---	---------------------------------	----------------------------	-------



ELEV 4	D	TDZE 4
--------	----------	--------



CATEGORY	A	B	C	D
LPV DA		204/18	200 (200-½)	
LNAV/VNAV DA		254/24	250 (300-½)	
LNAV MDA	340/24	336 (400-½)	340/26	336 (400-½)
C CIRCLING	520-1	516 (600-1)	580-1½ 576 (600-1½)	600-2 596 (600-2)

RLS Rwy 2
TDZ/CL Rwy 11
HIRL All Runways

NEW ORLEANS, LOUISIANA
Amdt 2B 17AUG17

LOUIS ARMSTRONG NEW ORLEANS INTL (MSY)
30°00'N-90°16'W
RNAV (GPS) Y RWY 11

SC-4, 25 MAR 2021 to 22 APR 2021

SC-4, 25 MAR 2021 to 22 APR 2021