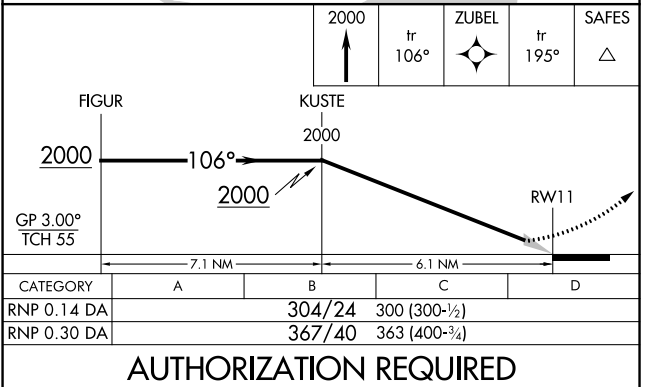
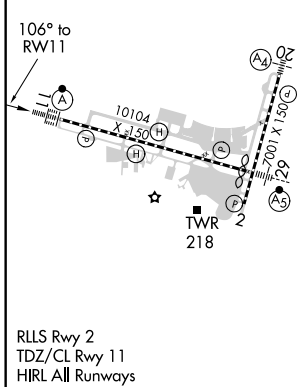
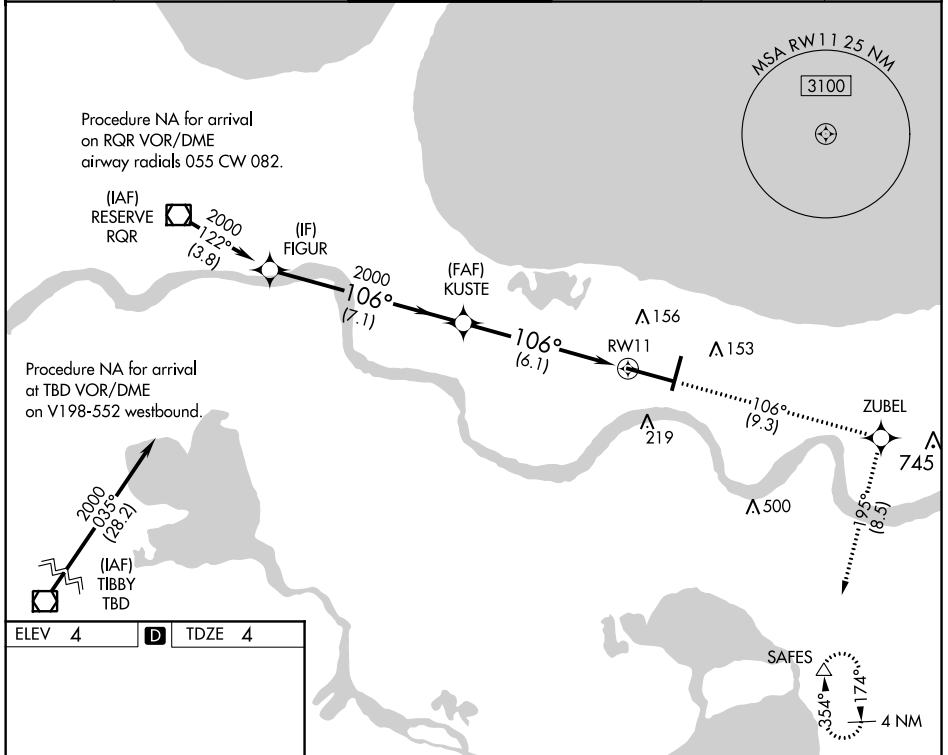


APP CRS 106°	Rwy Idg 9800
	TDZE 4
	Apt Elev 4

RNAV (RNP) Z RWY 11

LOUIS ARMSTRONG NEW ORLEANS INTL (MSY)

<p>For uncompensated Baro-VNAV systems, procedure NA below -1°C (31°F) or above 54°C (130°F). GPS required. For inop ALSF-2, increase RNP 0.30 all Cats visibility to RVR 6000.</p>	<p>ALSF-2</p>	<p>MISSED APPROACH: Climb to 2000 on track 106° to ZUBEL and on track 195° to SAFES and hold.</p>			
	<p>D-ATIS 127.55</p>	<p>NEW ORLEANS APP CON WEST 125.5 350.35 EAST 133.15 290.3</p>	<p>NEW ORLEANS TOWER 119.5 254.3</p>	<p>GND CON 121.9 273.525</p>	<p>CLNC DEL 126.575</p>



SC-4, 25 MAR 2021 to 22 APR 2021

SC-4, 25 MAR 2021 to 22 APR 2021