

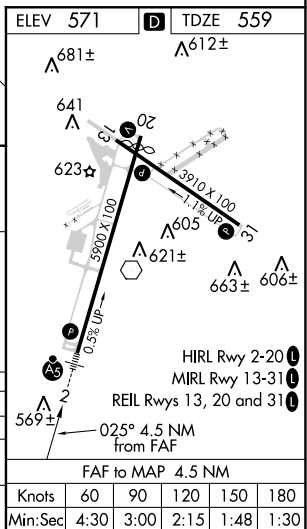
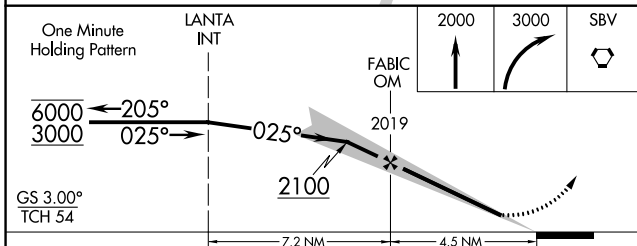
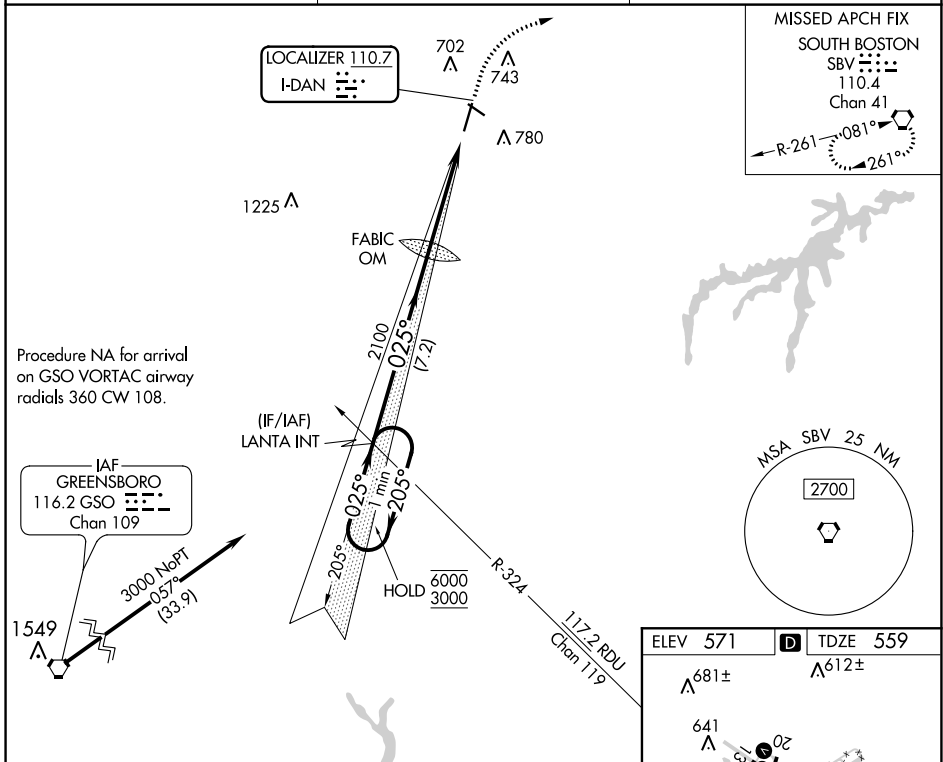
LOC I-DAN 110.7	APP CRS 025°	Rwy Idg TDZE Apt Elev	5600 559 571
---------------------------	------------------------	-----------------------------	---

ILS or LOC RWY 2

DANVILLE RGNL (DAN)

<p>For inop ALS, increase S-LOC 2 Cat C/D visibility to 1 3/8 SM.</p>	<p>MALS R</p>	<p>MISSED APPROACH: Climb to 2000 then climbing right turn to 3000 direct SBV VORTAC and hold.</p>
---	---------------	--

ASOS 128.125	WASHINGTON CENTER 124.05 307.0	UNICOM 123.05 (CTAF) 1
------------------------	--	----------------------------------



CATEGORY	A	B	C	D
S-ILS 2		759-1/2	200 (200-1/2)	
S-LOC 2	1020-1/2	461 (500-1/2)	1020-1	461 (500-1)
CIRCLING	1120-1	549 (600-1)	1120-1 1/2	1200-2
			549 (600-1 1/2)	629 (700-2)

NE-3, 25 MAR 2021 to 22 APR 2021

NE-3, 25 MAR 2021 to 22 APR 2021