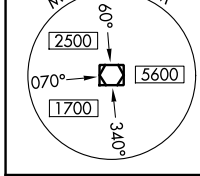
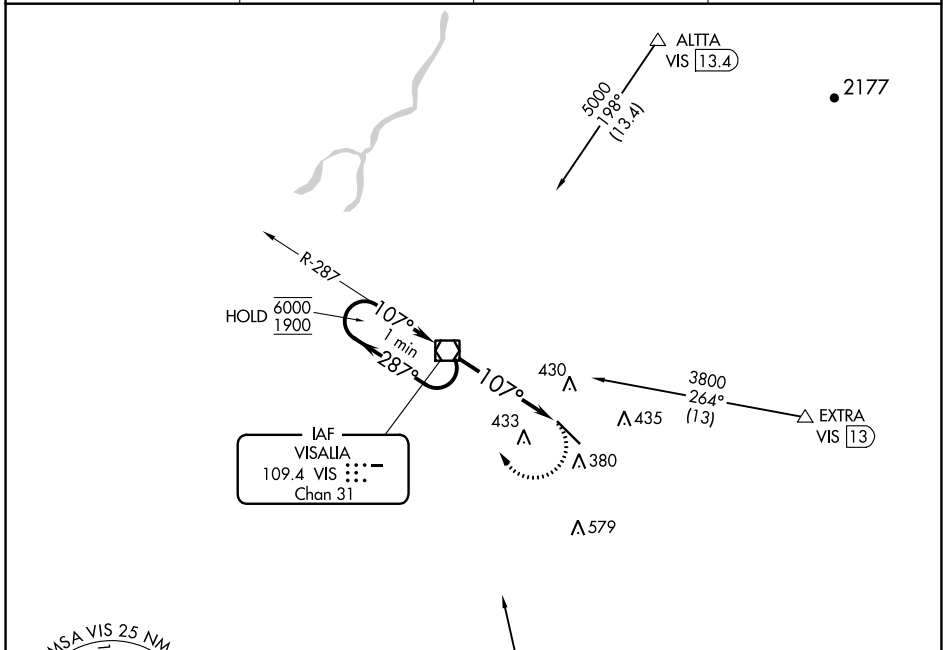


VOR/DME VIS 109.4 Chan 31	APP CRS 107°	Rwy Idg TDZE Apt Elev	5635 293 295
---	------------------------	-----------------------------	---

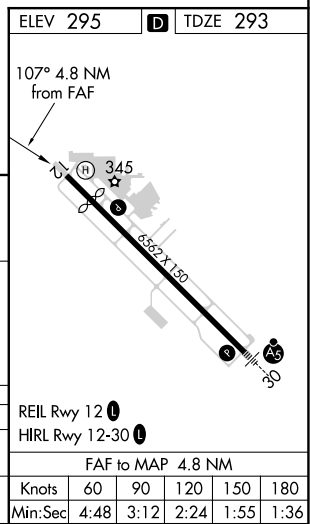
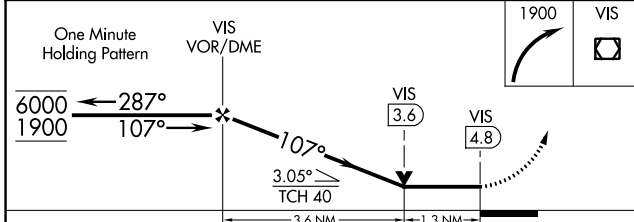
VOR RWY 12

VISALIA MUNI (VIS)

<p>▼ Rwy 12 helicopter visibility reduction below 3/4 SM NA.</p>		<p>▲ MISSED APPROACH: Climbing right turn to 1900 direct VIS VOR/DME and hold.</p>	
AWOS-3PT 119.925	FRESNO APP CON 118.5	CLNC DEL 118.5	UNICOM 123.05 (CTAF) 0



Procedure NA for arrivals at PIXKEY on V23 southeast bound.



CATEGORY	A	B	C	D
S-12	740-1	447 (500-1)	740-1 3/8	447 (500-1 3/8)
C CIRCLING	740-1 445 (500-1)	760-1 465 (500-1)	760-1 1/2 465 (500-1 1/2)	940-2 645 (700-2)

REIL Rwy 12 0	HIRL Rwy 12-30 0	FAF to MAP 4.8 NM				
Knots	60	90	120	150	180	
Min:Sec	4:48	3:12	2:24	1:55	1:36	

SW-2, 25 MAR 2021 to 22 APR 2021

SW-2, 25 MAR 2021 to 22 APR 2021