

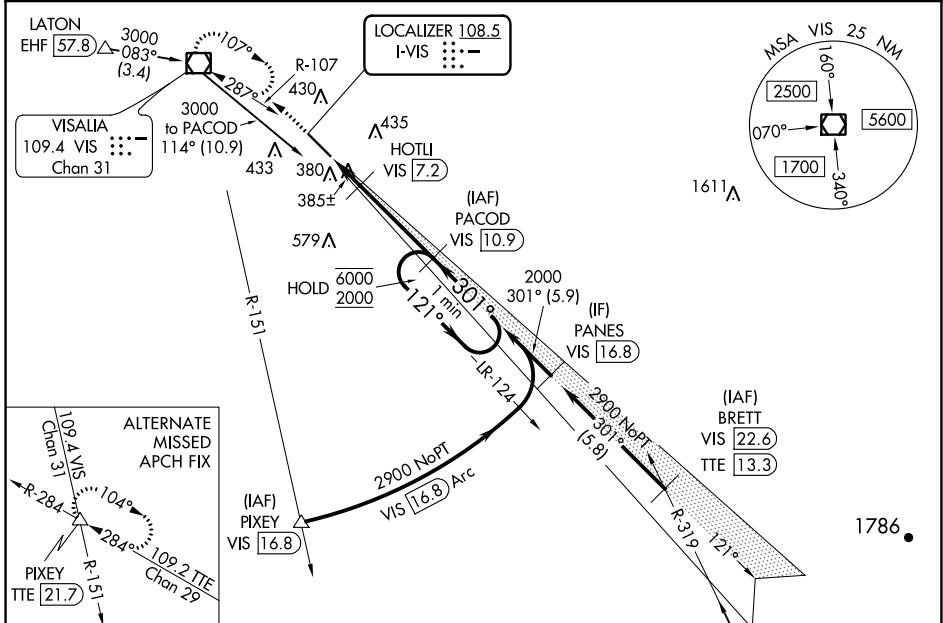
# ILS or LOC RWY 30

VISALIA MUNI (VIS)

LOC I-VIS <b>108.5</b>	APP CRS <b>301°</b>	Rwy Idg 5635
		TDZE 295
		Apt Elev 295

DME required.	MALS R	MISSED APPROACH: Climb to 1000 then climbing left turn to 3000 direct VIS VOR/DME and hold, continue climb-in-hold to 3000.
<p>▼ DME from VIS VOR/DME.</p> <p>▲ Simultaneous reception of I-VIS and VIS DME required.</p> <p>For inop ALS, increase S-LOC 30 Cat C/D visibility to 1 SM.</p>		

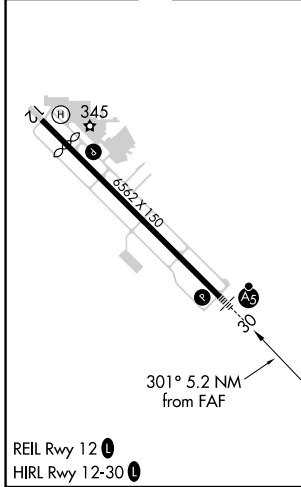
AWOS-3PT <b>119.925</b>	FRESNO APP CON <b>118.5</b>	CLNC DEL <b>118.5</b>	UNICOM <b>123.05 (CTAF)</b>
----------------------------	--------------------------------	--------------------------	--------------------------------



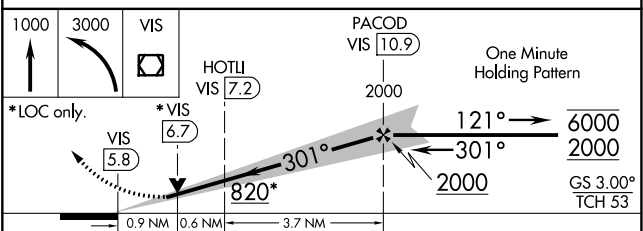
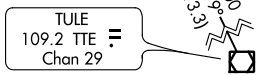
SW-2, 25 MAR 2021 to 22 APR 2021

SW-2, 25 MAR 2021 to 22 APR 2021

ELEV 295	<b>D</b>	TDZE 295
----------	----------	----------



Procedure NA for arrivals at TTE VOR/DME on V165-459 southeast bound.



CATEGORY	A	B	C	D
S-ILS 30	502-½		207 (300-½)	
S-LOC 30	640-½	345 (400-½)	640-⅝	345 (400-⅝)
<b>C</b> CIRCLING	720-1 425 (500-1)	760-1 465 (500-1)	760-1½ 465 (500-1½)	940-2 645 (700-2)