

WAAS CH 90229 W35A	APP CRS 355°	Rwy Idg 12250 TDZE 496 Apt Elev 542
--	------------------------	--

RNAV (GPS) Y RWY 35L

AUSTIN-BERGSTROM INTL (AUS)

RNP APCH

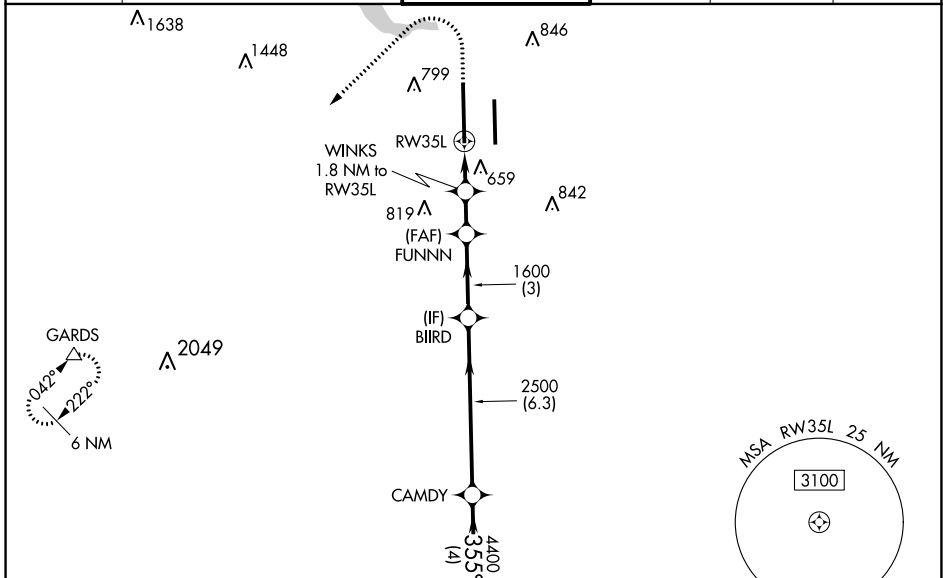
For uncompensated Baro-VNAV systems, LNAV/VNAV NA below -6°C or above 54°C. Simultaneous approach authorized. LNAV procedure NA during simultaneous operations. Use of FD or AP providing RNAV track guidance required during simultaneous operations. For inop ALS, increase visibility, LPV Cat E to RVR 4000, LNAV/VNAV Cat E to 1 1/8 SM, and LNAV Cat E to 1 1/4 SM. Rwy 35L helicopter visibility reduction below 3/4 SM NA. ** RVR 1800 authorized with use of FD or AP or HUD to DA.

MALSR

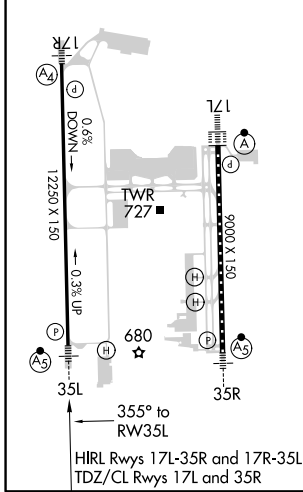


MISSED APPROACH:
Climb to 1700 then climbing left turn to 3500 direct GARDS and hold.

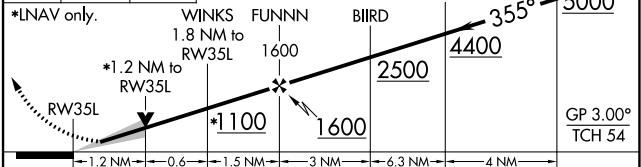
D-ATIS 124.4	AUSTIN APP CON 127.225 317.65 (EAST) 120.875 270.25 (SOUTH) 119.0 370.85 (WEST)	AUSTIN TOWER 121.0 281.5	GND CON 121.9 348.6	CLNC DEL 125.5 263.0	CPDLC
------------------------	---	------------------------------------	-------------------------------	--------------------------------	-------



ELEV 542	D	TDZE 496
-----------------	----------	-----------------



1700	3500	GARDS	VGSI and RNAV glidepath not coincident (VGSI Angle 3.00/TCH 60).
------	------	-------	--



CATEGORY	A	B	C	D	E
LPV DA **	696/24		200 (200-1/2)		
LNAV/VNAV DA	972/60		476 (500-1 1/4)		
LNAV MDA	920/24	424 (400-1/2)	920/40	424 (400-3/4)	
<input checked="" type="checkbox"/> CIRCLING	1040-1 498 (500-1)	1100-1 558 (600-1)	1200-1 3/4 658 (700-1 1/4)	1200-2 658 (700-2)	1520-3 978 (1000-3)