

RNAV (RNP) Z RWY 35R

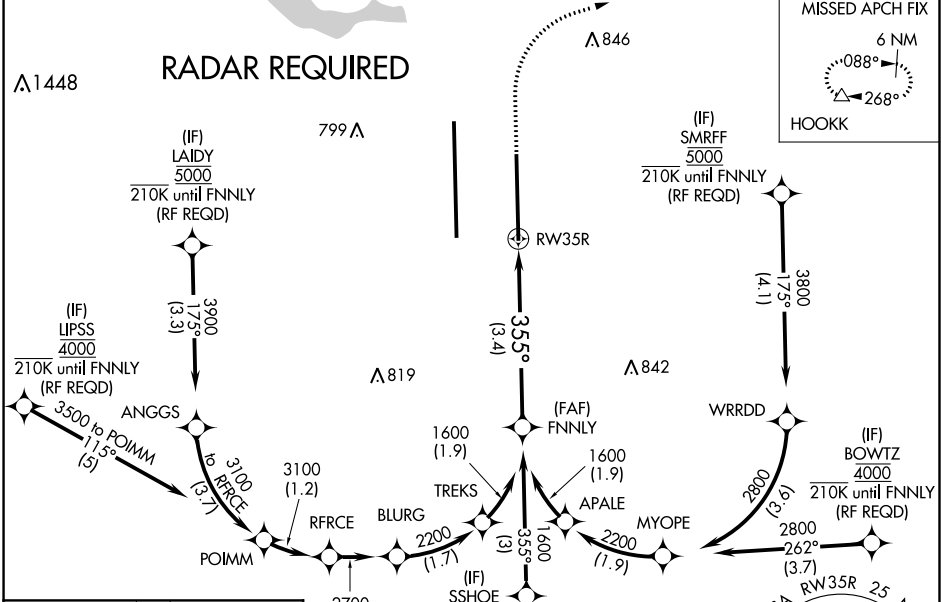
AUSTIN-BERGSTROM INTL (A US)

| | | |
|-------------|----------|-------------|
| APP CRS | Rwy ldg | 9000 |
| 355° | TDZE | 480 |
| | Apt Elev | 542 |

▼ For uncompensated Baro-VNAV systems, procedure NA below -6°C (22°F) or above 54°C (130°F). Simultaneous approach authorized. GPS required. For inop ALS, increase RNP 0.11 all Cats visibility to RVR 4500.

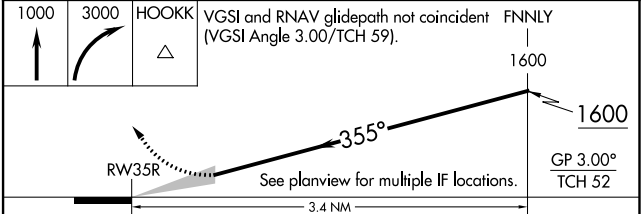
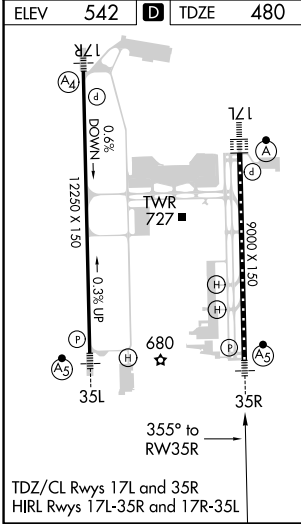
MISSED APPROACH: Climb to 1000 then climbing right turn to 3000 direct HOOKK and hold.

| | | | | | |
|--------------|---|--------------------|--------------------|--------------------|-------|
| D-ATIS | AUSTIN APP CON | AUSTIN TOWER | GND CON | CLNC DEL | CPDLC |
| 124.4 | 127.225 317.65 (EAST) 120.875 270.25 (SOUTH) 119.0 370.85 (WEST) | 121.0 281.5 | 121.9 348.6 | 125.5 263.0 | |



SC-3, 25 MAR 2021 to 22 APR 2021

SC-3, 25 MAR 2021 to 22 APR 2021



| CATEGORY | A | B | C | D |
|-------------|---|--------|--------------|---|
| RNP 0.11 DA | | 751/24 | 271 (300-½) | |
| RNP 0.16 DA | | 873/45 | 393 (400-¾) | |
| RNP 0.30 DA | | 951/60 | 471 (500-1¼) | |

AUTHORIZATION REQUIRED