

# RNAV (RNP) Z RWY 17R

AUSTIN-BERGSTROM INTL (AUS)

APP CRS	Rwy Idg	<b>12250</b>
<b>175°</b>	TDZE	<b>542</b>
	Apt Elev	<b>542</b>

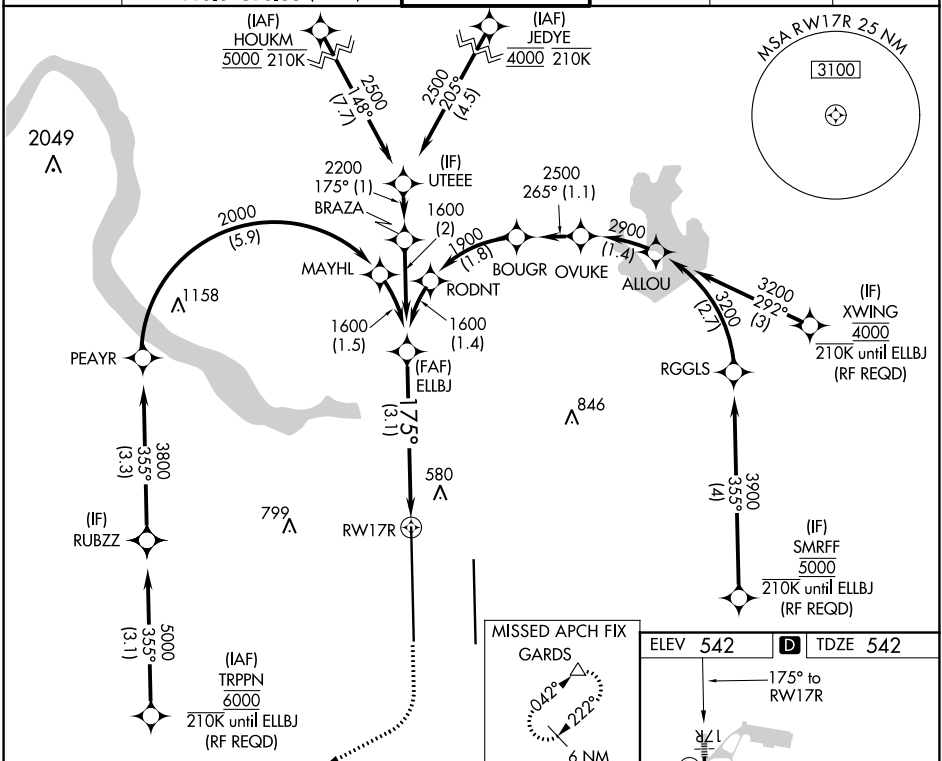
RNP AR APCH. RF required. RADAR required.

Simultaneous approach authorized. For uncompensated Baro-VNAV systems, procedure NA below -5°C or above 54°C.

MALS

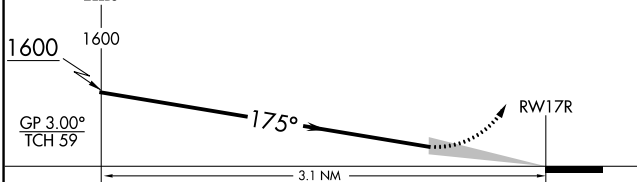
MISSED APPROACH: Climb to 1000 then climbing right turn to 3500 direct GARDS and hold.

D-ATIS	AUSTIN APP CON	AUSTIN TOWER	GND CON	CLNC DEL	CPDLC
<b>124.4</b>	<b>127.225 317.65</b> (EAST) <b>120.875 270.25</b> (SOUTH) <b>119.0 370.85</b> (WEST)	<b>121.0 281.5</b>	<b>121.9 348.6</b>	<b>125.5 263.0</b>	



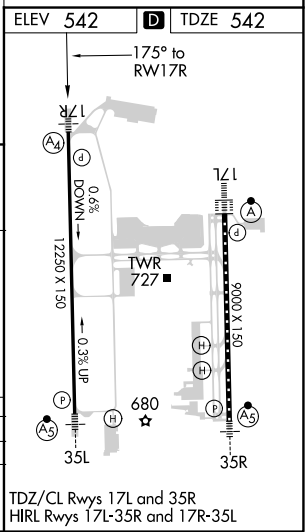
See planview for multiple IF locations.

1000	3500	GARDS



CATEGORY	A	B	C	D
RNP 0.30 DA		883/40	341 (400-¾)	

## AUTHORIZATION REQUIRED



TDZ/CL Rws 17L and 35R  
HIRL Rws 17L-35R and 17R-35L

SC-3, 25 MAR 2021 to 22 APR 2021

SC-3, 25 MAR 2021 to 22 APR 2021