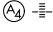


LOC/DME I-GFQ 110.95 Chan 46(Y)	APP CRS 175°	Rwy Idg 12250 TDZE 542 Apt Elev 542
---	------------------------	--

ILS or LOC RWY 17R

AUSTIN-BERGSTROM INTL (AUS)

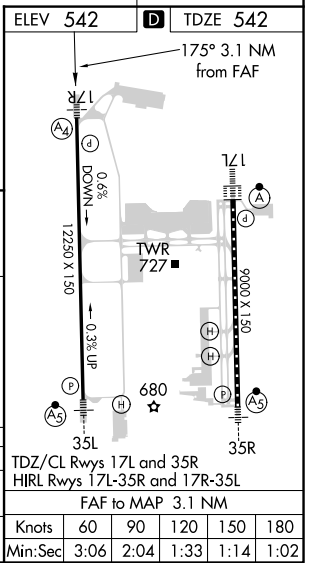
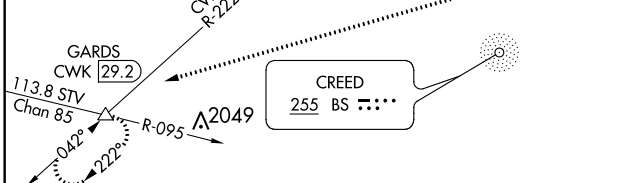
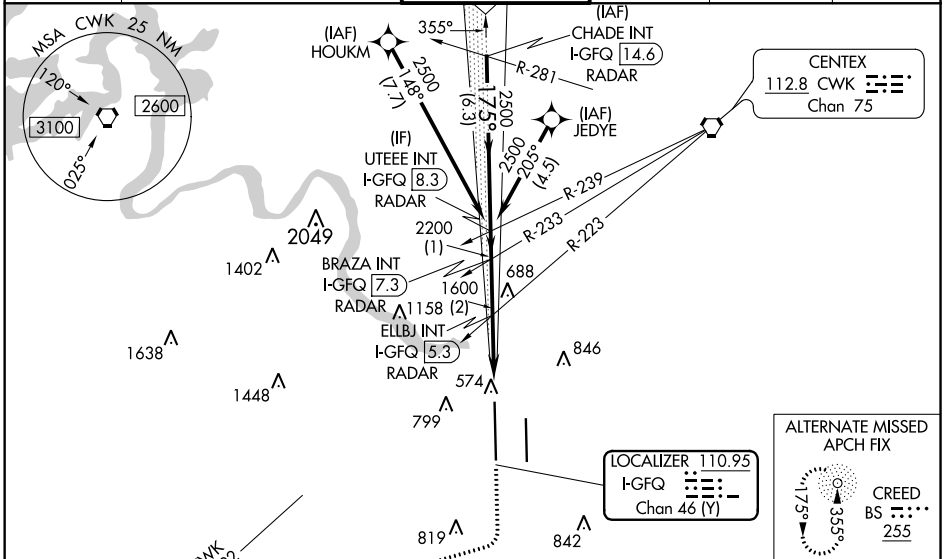
RNAV 1 - GPS or RADAR required for procedure entry.
From HOUKM, JEDYE: RNAV 1 - GPS required.

MALS 

MISSED APPROACH: Climb to 1000 then climbing right turn to 3500 on heading 250° and CWK VORTAC R-222 to GARDS INT/CWK 29.2 DME and hold.

Simultaneous approach authorized. For inop ALS, increase S-LOC 17R Cats C/D/E visibility to RVR 4500.

D-ATIS 124.4	AUSTIN APP CON 127.225 317.65 (EAST) 120.875 270.25 (SOUTH) 119.0 370.85 (WEST)	AUSTIN TOWER 121.0 281.5	GND CON 121.9 348.6	CLNC DEL 125.5 263.0	CPDLC
------------------------	---	------------------------------------	-------------------------------	--------------------------------	-------



CHADE INT I-GFQ [14.6] RADAR	UTEEE INT I-GFQ [8.3] RADAR	BRAZA INT I-GFQ [7.3] RADAR	ELLBJ INT I-GFQ [5.3] RADAR	1000	3500	CWK R-222	GARDS
<p>4000 - 175°</p> <p>2500</p> <p>2200</p> <p>1600</p> <p>1600</p> <p>GS 3.00° TCH 59</p>				<p>↑ hdg 250°</p>		<p>*LOC only.</p>	
<p>6.3 NM</p> <p>1 NM</p> <p>2 NM</p> <p>2.3 NM</p> <p>0.8 NM</p>							

CATEGORY	A	B	C	D	E
S-ILS 17R		742/40	200 (200-¾)		
S-LOC 17R		860/40	318 (400-¾)		

TDZ/CL Rwy 17L and 35R					
HIRL Rwy 17L-35R and 17R-35L					
FAF to MAP 3.1 NM					
Knots	60	90	120	150	180
Min:Sec	3:06	2:04	1:33	1:14	1:02

SC-3, 25 MAR 2021 to 22 APR 2021

SC-3, 25 MAR 2021 to 22 APR 2021