

LOC/DME I-VNK <b>110.5</b> Chan <b>42</b>	APP CRS <b>175°</b>	Rwy Idg <b>9000</b> TDZE <b>492</b> Apt Elev <b>542</b>
---	------------------------	---

# ILS RWY 17L (SA CAT I)

## AUSTIN-BERGSTROM INTL (AUS)

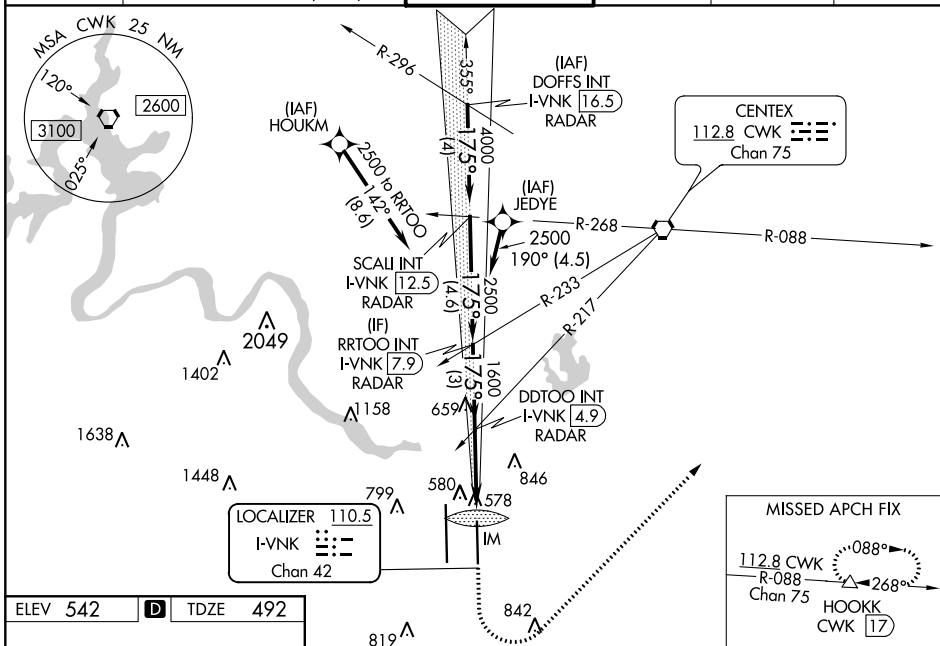
RNAV 1- GPS or RADAR required for procedure entry.  
DME required.  
From HOUKM, JEDYE: RNAV 1- GPS required.

Simultaneous approach authorized. Requires specific OPSPEC, MSPEC or LOA approval and use of HUD to DH.

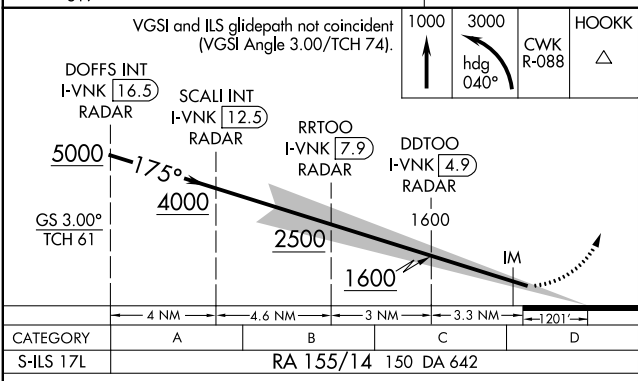
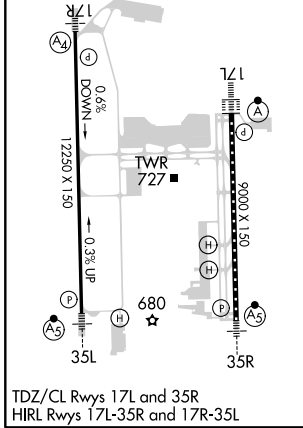
ALSF-2  
A

MISSED APPROACH: Climb to 1000, then climbing left turn to 3000 on heading 040° and CWK VORTAC R-088 to HOOKK/CWK 17 DME and hold.

D-ATIS <b>124.4</b>	AUSTIN APP CON <b>127.225 317.65</b> (EAST) <b>120.875 270.25</b> (SOUTH) <b>119.0 370.85</b> (WEST)	AUSTIN TOWER <b>121.0 281.5</b>	GND CON <b>121.9 348.6</b>	CLNC DEL <b>125.5 263.0</b>	CPDLC
------------------------	---	------------------------------------	-------------------------------	--------------------------------	-------



ELEV <b>542</b>	<b>D</b>	TDZE <b>492</b>
-----------------	----------	-----------------



**SA CATEGORY I - SPECIAL AIRCREW & AIRCRAFT CERTIFICATION REQUIRED**

RA 155/14 150 DA 642

SC-3, 25 MAR 2021 to 22 APR 2021

SC-3, 25 MAR 2021 to 22 APR 2021