

# RNAV (RNP) Z RWY 13R

PALM SPRINGS INTL (PSP)

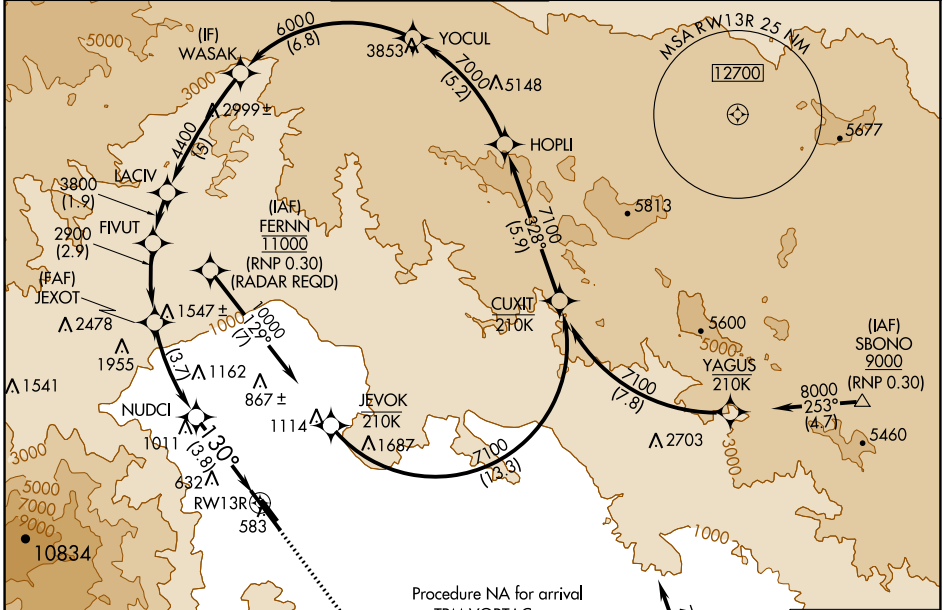
APP CRS	Rwy Idg	<b>6857</b>
<b>130°</b>	TDZE	<b>451</b>
	Apt Elev	<b>476</b>

RNP AR APCH, RF required.

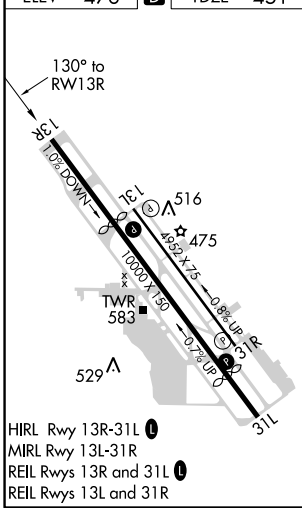
**▽** For uncompensated Baro-VNAV systems, procedure NA below 1°C or above 54°C.

MISSED APPROACH: Climb to 900 then climbing left turn to 4000 direct TRM VORTAC and hold.

ATIS	SOCAL APP CON*	PALM SPRINGS TOWER*	GND CON	CLNC DEL	UNICOM
<b>124.65</b>	<b>126.7 370.95</b> <b>135.275 251.1</b>	<b>119.7 (CTAF) 0 377.05</b>	<b>121.9</b>	<b>128.35</b>	<b>122.95</b>



ELEV 476	<b>D</b>	TDZE 451
----------	----------	----------



PALM SPRINGS, CALIFORNIA  
Amdt 1A 05DEC19

Procedure NA for arrival on TRM VORTAC airway radials 263 CW 021.

(IAF) THERMAL TRM 9000 (RNP 0.30)

MISSED APCH FIX

THERMAL TRM 130° 4 NM

WASAK	VGSi and descent angles not coincident (VGSi Angle 3.00/TCH 47).				900	4000	TRM
6000	LACIV	FIVUT	JEXOT	NUDCI	RWY 13R		
	4400	3800	2900	1713			
GP 3.00°					130°		
TCH 45							
	5 NM		1.9 NM		2.9 NM		3.7 NM

CATEGORY	A	B	C	D
RNP 0.17 DA		812-1¼	361 (400-1¼)	
RNP 0.30 DA		882-1½	431 (500-1½)	

**AUTHORIZATION REQUIRED**

SW-3, 25 MAR 2021 to 22 APR 2021

SW-3, 25 MAR 2021 to 22 APR 2021