

# MECCA ONE DEPARTURE

ASOS  
118.325  
CLNC DEL  
120.225  
UNICOM  
123.0 (CTAF)  
RIVERSIDE RADIO  
122.3  
SOCAL DEP CON  
135.275 251.1

TWENTYNINE PALMS  
114.2 TNP  
Chan 89  
N34°06.73'-W115°46.19'  
L-4, H-4

CLOWD  
N33°54.17'  
W115°56.36'

CONES  
N33°48.28'  
W116°01.11'

PALM SPRINGS  
115.5 PSP  
Chan 102  
N33°52.20'-W116°25.79'  
L-4, H-4

THERMAL  
116.2 TRM  
Chan 109  
N33°37.69'-W116°09.61'

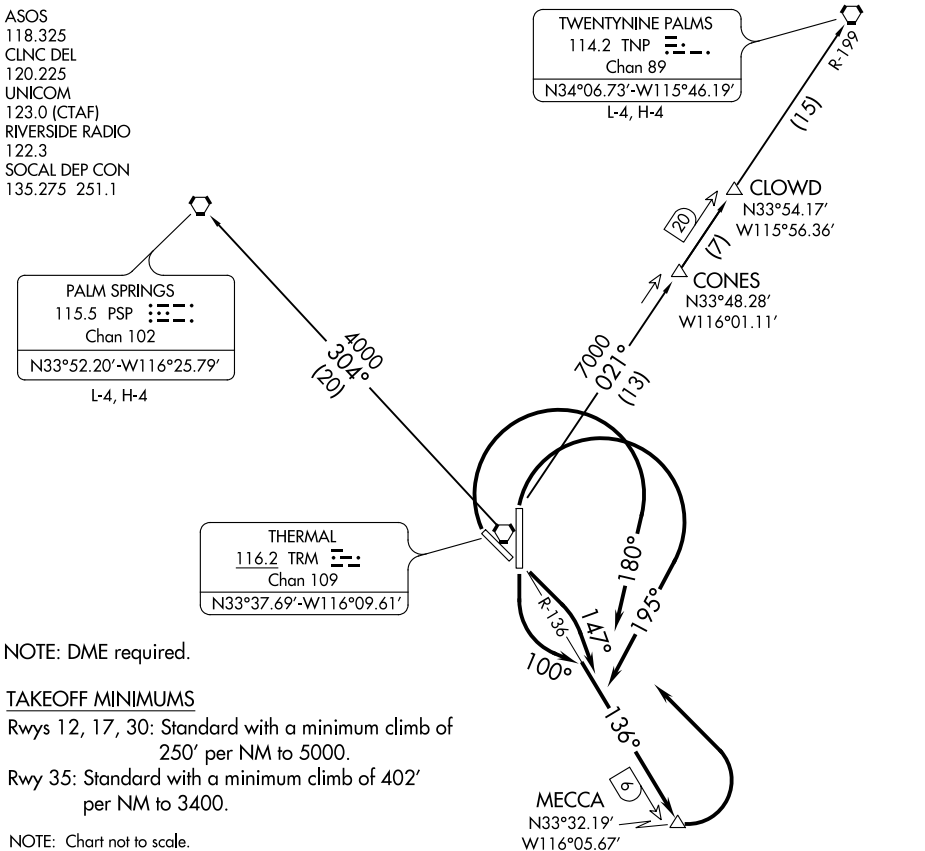
NOTE: DME required.

### TAKEOFF MINIMUMS

Rwys 12, 17, 30: Standard with a minimum climb of 250' per NM to 5000.

Rwy 35: Standard with a minimum climb of 402' per NM to 3400.

NOTE: Chart not to scale.



### DEPARTURE ROUTE DESCRIPTION

**TAKEOFF RUNWAY 12:** Climbing right turn heading 147° to intercept TRM VORTAC R-136 to MECCA, then climbing left turn direct TRM VORTAC. Thence. . .

**TAKEOFF RUNWAY 17:** Climbing left turn heading 100° to intercept TRM VORTAC R-136 to MECCA, then climbing left turn direct TRM VORTAC. Thence. . .

**TAKEOFF RUNWAY 30:** Climbing right turn heading 180° to intercept TRM VORTAC R-136 to MECCA, then climbing left turn direct TRM VORTAC. Thence. . .

**TAKEOFF RUNWAY 35:** Climbing right turn heading 195° to intercept TRM VORTAC R-136 to MECCA, then climbing left turn direct TRM VORTAC. Thence. . .

. . . then on (assigned transition). Expect filed altitude 10 minutes after departure.

**PALM SPRINGS TRANSITION (MECCA1.PSP):** From over TRM VORTAC on TRM R-304 to PSP VORTAC.

**TWENTY NINE PALMS TRANSITION (MECCA1.TNP):** From over TRM VORTAC on TRM R-021 and TNP R-199 to TNP VORTAC.

# MECCA ONE DEPARTURE

SW-3, 25 MAR 2021 to 22 APR 2021

SW-3, 25 MAR 2021 to 22 APR 2021