

VOR/DME BPT <b>114.5</b> Chan <b>92</b>	APP CRS <b>359°</b>	Rwy Idg <b>5070</b> TDZE <b>16</b> Apt Elev <b>16</b>
---	------------------------	---

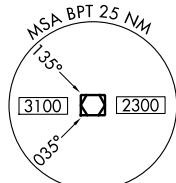
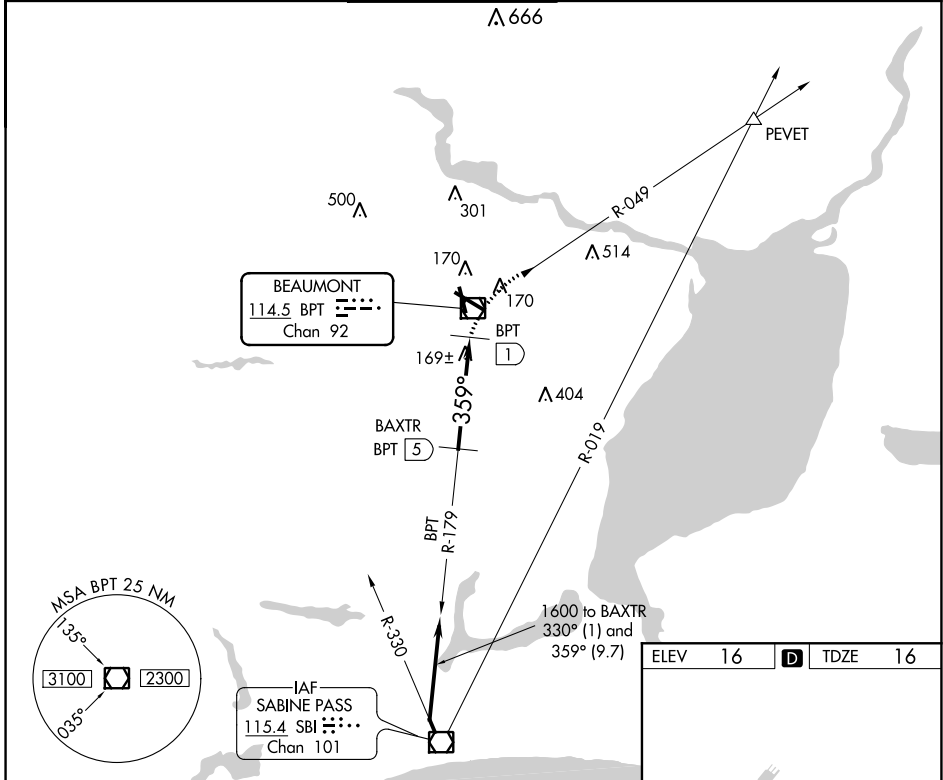
# VOR/DME RWY 34

JACK BROOKS RGNL (BPT)

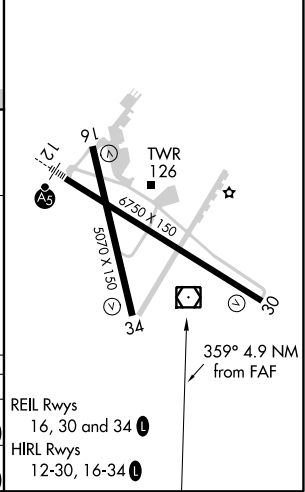
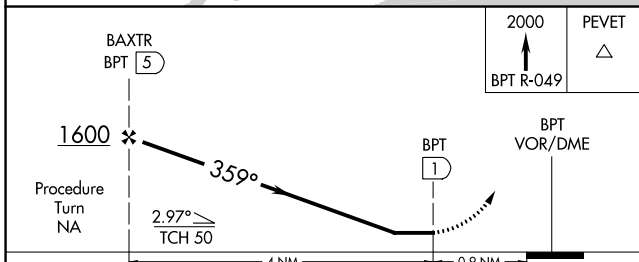
**⚠** When local altimeter setting not received, use Orange County altimeter setting and increase all MDA 40 feet, increase S-34 visibility Cat C and D ¼ mile and Circling Cat E visibility ¼ mile.

**⚠** MISSED APPROACH: Climb to 2000 via BPT VOR/DME R-049 to PEVET INT.

ATIS <b>126.3</b>	HOUSTON APP CON <b>121.3 377.1</b>	BEAUMONT TOWER* <b>119.5 (CTAF) 0</b>	GND CON <b>124.85</b>	CLNC DEL <b>118.3</b>	UNICOM <b>122.95</b>
----------------------	---------------------------------------	--	--------------------------	--------------------------	-------------------------



ELEV 16	<b>D</b>	TDZE 16
---------	----------	---------



CATEGORY	A	B	C	D	E
S-34	500-1¼	484 (500-1¼)		500-1½ 484 (500-1½)	500-1¾ 484 (500-1¾)
CIRCLING	500-1¼	484 (500-1¼)	500-1½ 484 (500-1½)	580-2 564 (600-2)	820-2¾ 804 (900-2¾)

REIL Rwy  
16, 30 and 34

HIRL Rwy  
12-30, 16-34

SC-5, 25 MAR 2021 to 22 APR 2021

SC-5, 25 MAR 2021 to 22 APR 2021