

VOR/DME BPT 114.5 Chan 92	APP CRS 120°	Rwy Idg 6750 TDZE 15 Apt Elev 16
---	------------------------	---

VOR RWY 12

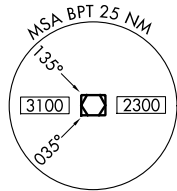
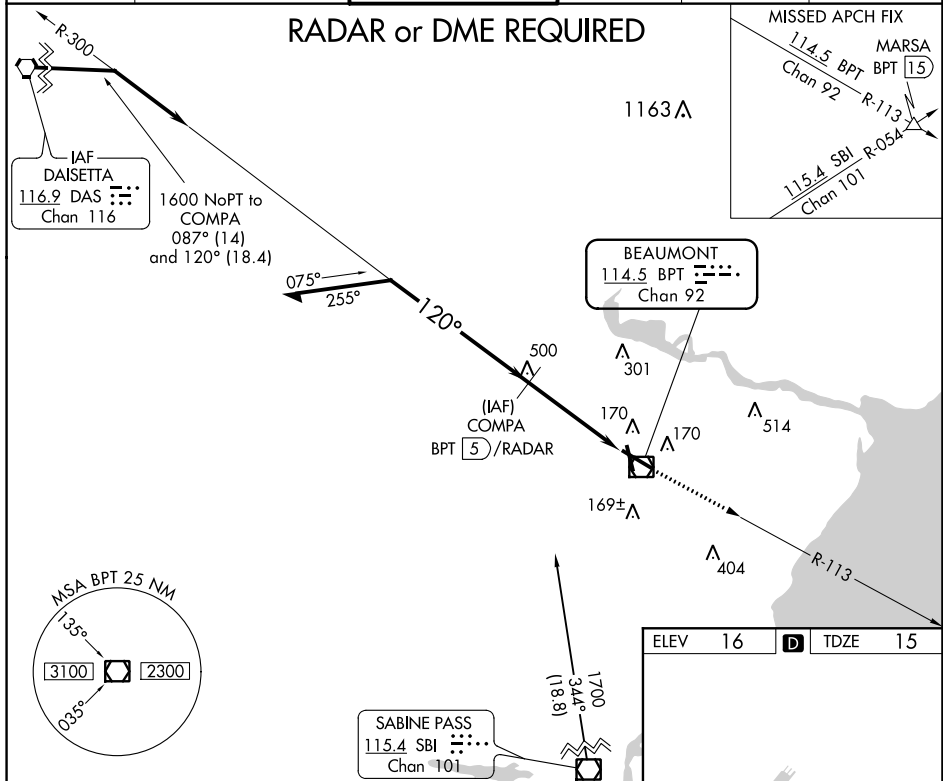
JACK BROOKS RGNL (BPT)

⚠ For inoperative MALS/R, increase S-12 Cat C/D/E visibility to RVR 6000. When local altimeter setting not received, use Orange County altimeter setting and increase all MDA 40 feet and S-12 Cat C/D/E visibility to RVR 4500 and Circling Cat E ½ mile. For inop MALS/R when using Orange County altimeter setting, increase S-12 Cat E visibility to 1 3/8 mile.

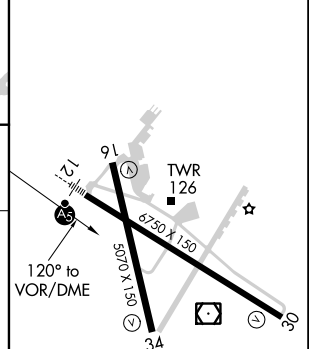
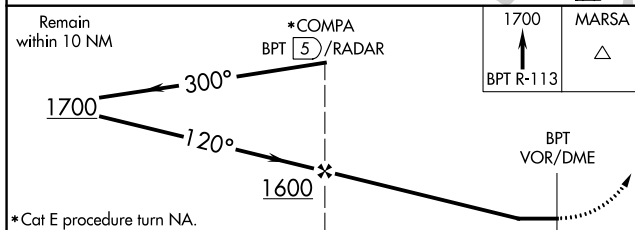
MALS/R
MISSED APPROACH:
Climb to 1700 via
BPT R-113 to MARS
Int/BPT 15 DME.

ATIS 126.3	HOUSTON APP CON 121.3 377.1	BEAUMONT TOWER* 119.5 (CTAF) 0	GND CON 124.85	CLNC DEL 118.3	UNICOM 122.95
----------------------	---------------------------------------	--	--------------------------	--------------------------	-------------------------

RADAR or DME REQUIRED



ELEV 16	D	TDZE 15
---------	----------	---------



	*Cat E procedure turn NA.		4.2 NM		
CATEGORY	A	B	C	D	E
S-12	420/24	405 (500-½)	420/40 405 (500-¾)		
CIRCLING	480-1	464 (500-1)	480-1½ 464 (500-1½)	580-2 564 (600-2)	820-2¾ 804 (900-2¾)

REIL Rwy 16, 30 and 34
HIRL Rwy 12-30, 16-34

SC-5, 25 MAR 2021 to 22 APR 2021

SC-5, 25 MAR 2021 to 22 APR 2021