

WAAS CH 99715 W12A	APP CRS 116°	Rwy Idg TDZE Apt Elev	6750 15 15
--	------------------------	-----------------------------	---------------------------------------

RNAV (GPS) RWY 12

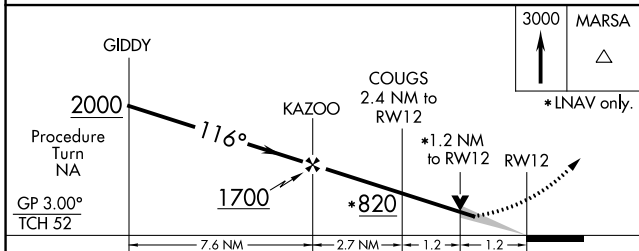
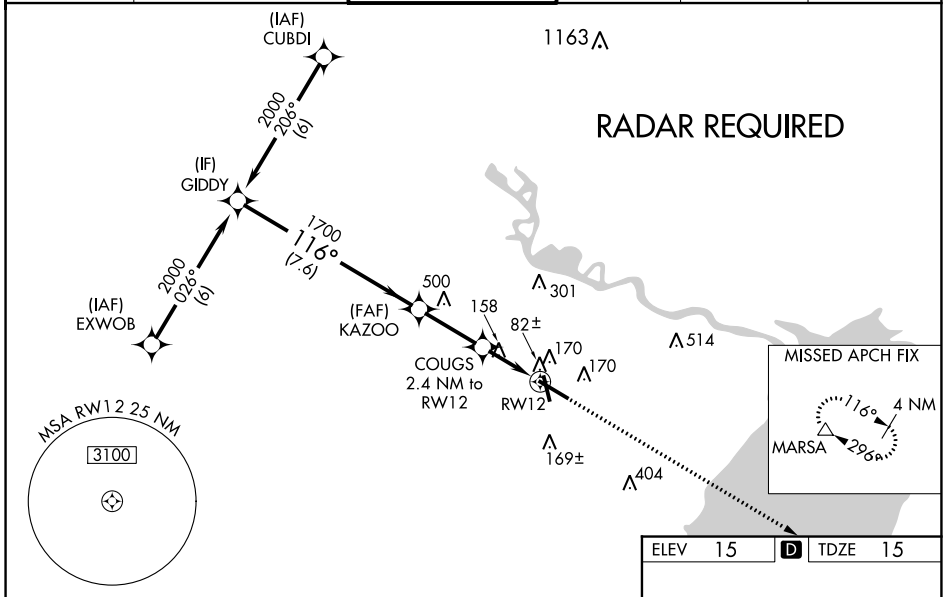
JACK BROOKS RGNL (BPT)

▼ Baro-VNAV NA when using Orange County altimeter setting. For uncompensated Baro-VNAV systems, LNAV/VNAV NA below -15°C (5°F) or above 49°C (120°F), DME/DME RNP-0.3 NA. When local altimeter setting not received, use Orange County altimeter setting and increase all DA 32 feet and all MDA 40 feet, increase LNAV/VNAV Cat E, LNAV Cat E and Circling Cat E visibility ¼ mile. For inoperative MALSR, increase LPV Cat E visibility to RVR 4000, LNAV/VNAV Cat E to RVR 6000 and LNAV Cat E to 1½ miles. For inoperative MALSR when using Orange County altimeter setting, increase LPV Cat E visibility to RVR 4000, LNAV/VNAV Cat E to 1½ miles, and LNAV Cat E to 1¾ miles. VDP NA when using Orange County altimeter setting. **RVR 1800 authorized with use of FD or AP or HUD to DA (NA when using Orange County altimeter setting).

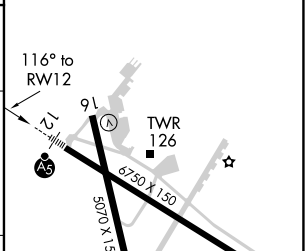
MALSR

MISSED APPROACH:
Climb to 3000 direct MARSAs and hold.

ATIS 126.3	HOUSTON APP CON 121.3 377.1	BEAUMONT TOWER* 119.5 (CTAF) 0	GND CON 124.85	CLNC DEL 118.3	UNICOM 122.95
----------------------	---------------------------------------	---	--------------------------	--------------------------	-------------------------



ELEV 15	D	TDZE 15
---------	----------	---------



CATEGORY	A	B	C	D	E
LPV DA **		215/24	200 (200-½)		
LNAV/VNAV DA		375/40	360 (400-¾)		
LNAV MDA	460/24	445 (500-½)	460/40 445 (500-¾)	460/50	445 (500-1)
CIRCLING	480-1	465 (500-1)	480-1½ 465 (500-1½)	580-2 565 (600-2)	820-2¾ 805 (900-2¾)

REIL Rwy 16, 30 and 34 **1**
HIRL Rwy 12-30, 16-34 **1**

SC-5, 25 MAR 2021 to 22 APR 2021

SC-5, 25 MAR 2021 to 22 APR 2021