

YUMA, ARIZONA

# VOR/DME or TACAN RWY 17

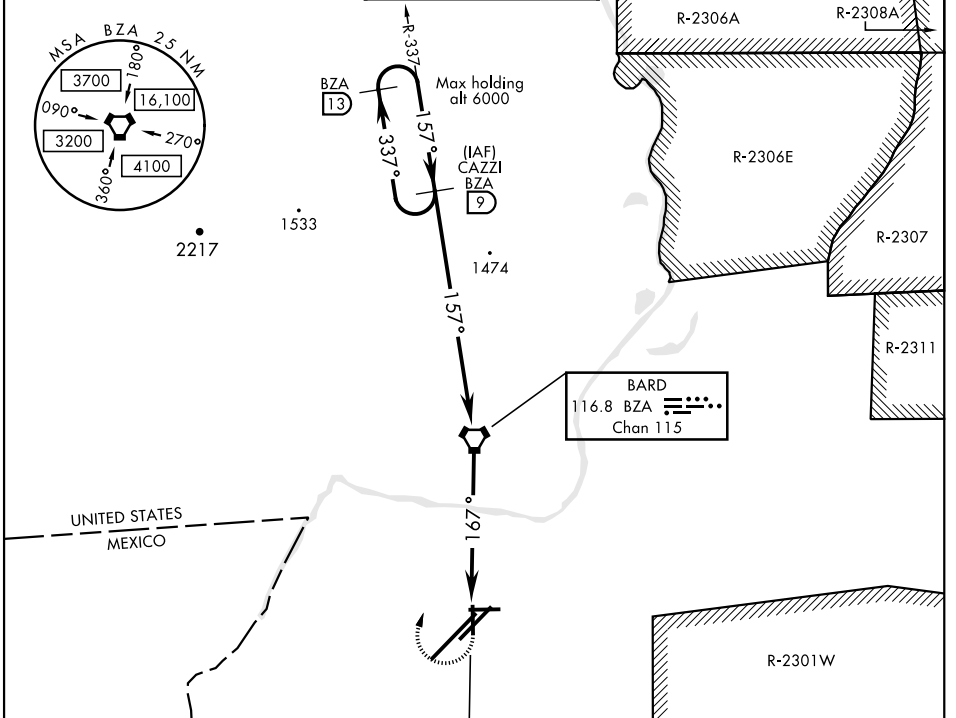
VORTAC BZA <b>116.8</b> Chan <b>115</b>	APCH CRS <b>167°</b>	Rwy Idg TDZE Arprt Elev <b>5710</b> <b>197</b> <b>213</b>
---	-------------------------	--

AL-511 [USN]

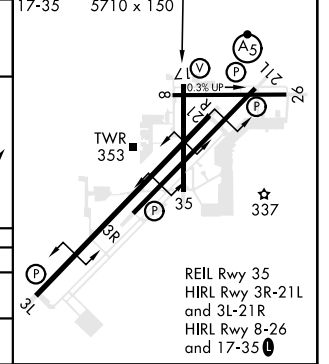
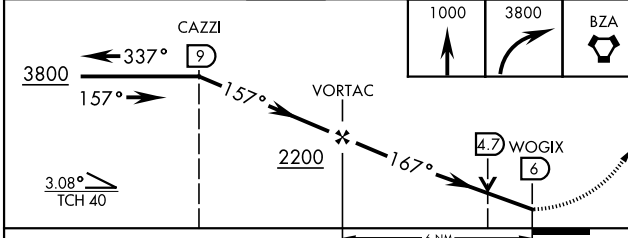
YUMA MCAS/YUMA INTL (KNYL)

**▽** MISSED APPROACH: Climb to 1000, then climbing right turn to 3800 direct BZA VORTAC and BZA R-337 to CAZZI and hold.

ATIS★ <b>118.8 273.5</b>	ASOS <b>256.4</b>	YUMA APP CON <b>124.7 371.975</b>	YUMA TOWER★ <b>119.3</b> (CTAF) <b>0 377.075</b>	GND CON <b>121.9 314.0</b>	CLNC DEL <b>118.0 336.4</b>	ASR/ PAR
-----------------------------	----------------------	--------------------------------------	---	-------------------------------	--------------------------------	-------------



ELEV 213	TDZE 197
3L-21R 13,300 x 200	167°6.0 NM from VORTAC
3R-21L 9239 x 150	
8-26 6146 x 150	
17-35 5710 x 150	



CATEGORY	A	B	C	D
S-17	660-1 463 (500-1)		660-1½ 463 (500-1½)	
CIRCLING	680-1 467 (500-1)	700-1 487 (500-1)	800-1½ 587 (600-1½)	800-2 587 (600-2)

YUMA, ARIZONA  
Amdt 4 24MAY18

32°39'N-114°36'W

YUMA MCAS/YUMA INTL (KNYL)

# VOR/DME or TACAN RWY 17

SW-4, 25 MAR 2021 to 22 APR 2021

SW-4, 25 MAR 2021 to 22 APR 2021