

# HEEDS TWO DEPARTURE (HEEDS2•HEEDS)

YUMA MCAS/YUMA INTL (KNYL)

SHL-511 [USN]

YUMA, ARIZONA

ATIS ★  
 118.8 273.5  
 CLNC DEL  
 118.0 336.4  
 GND CON  
 121.9 314.0  
 YUMA TOWER ★  
 119.3 377.075  
 YUMA DEP CON  
 125.55 282.325  
 ASOS  
 256.4

A  
2663

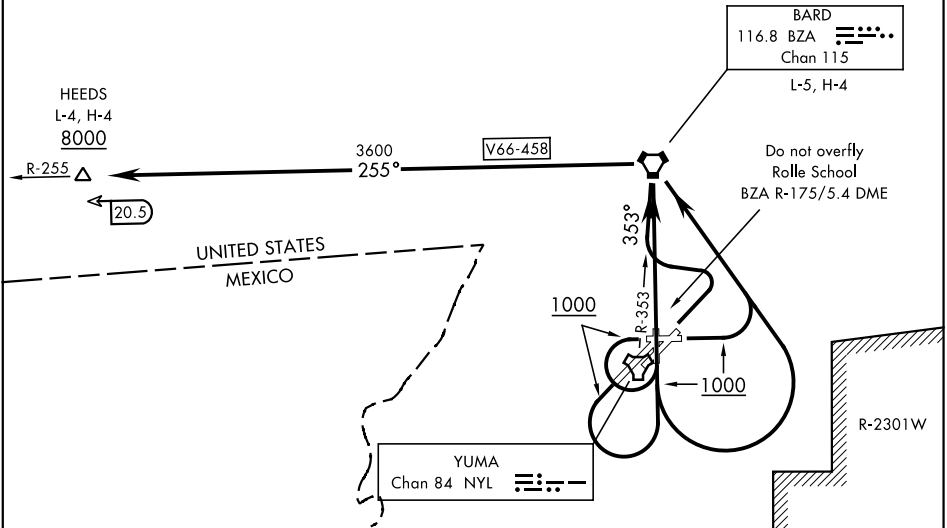
Rwy	Knots	60	120	180	240	300	360
3L/R	V/V(fpm)	313	626	939	1252	1565	1878
8, 17, 21L/R, 26	V/V(fpm)	291	582	873	1164	1455	1746
35	V/V(fpm)	328	656	984	1312	1640	1968

ATC Climb Rate to 8000

Runway 3L/R: Do not exceed 250 KIAS until intercepting NYL R-353. Cross BZA VORTAC at or below 9000.

Runway 8: Do not exceed 270 KIAS until 1000.

Runway 35: Cross BZA VORTAC at or below 14,000.



SW-4, 25 MAR 2021 to 22 APR 2021

SW-4, 25 MAR 2021 to 22 APR 2021

## DEPARTURE ROUTE DESCRIPTION

**TAKE-OFF RWY 3L/R:** Climbing left turn to 8000 to intercept NYL TACAN R-353 to BZA VORTAC and via BZA R-255 to HEEDS. Do not exceed 250 KIAS until intercepting NYL R-353. Cross BZA VORTAC at or below 9000. Cross HEEDS at or above 8000.

**TAKE-OFF RWY 8:** Climb to 1000, then climbing left turn direct BZA VORTAC, then via BZA R-255 to HEEDS. Do not exceed 270 KIAS until 1000. Cross HEEDS at or above 8000.

**TAKE-OFF RWY 17, 21L/R, 26:** Climb to 1000, then climbing left turn direct BZA VORTAC, then via BZA R-255 to HEEDS. Cross HEEDS at or above 8000.

**TAKE-OFF RWY 35:** Climb to 8000 direct BZA VORTAC and via BZA R-255 to HEEDS. Cross BZA VORTAC at or below 14,000. Cross HEEDS at or above 8000.

Then via assigned route. Maintain assigned altitude. Expect clearance to filed altitude 10 minutes after departure.

# HEEDS TWO DEPARTURE (HEEDS2•HEEDS)

Orig 24MAY18

YUMA, ARIZONA

YUMA MCAS/YUMA INTL (KNYL)