

CARGO NINE DEPARTURE (CARGO9•CARGO)

YUMA MCAS/YUMA INTL (KNYL)

YUMA, ARIZONA

ATIS ★
 118.8 273.5
 CLNC DEL
 118.0 336.4
 GND CON
 121.9 314.0
 YUMA TOWER ★
 119.3 377.075
 YUMA DEP CON
 125.55 282.325
 ASOS
 256.4

SHL-511 [USN]

| Rwy | Knots | 60 | 120 | 180 | 240 | 300 | 360 |
|------|----------|-----|-----|-----|-----|------|------|
| 3L/R | V/V(fpm) | 225 | 450 | 675 | 900 | 1125 | 1350 |
| 26 | V/V(fpm) | 210 | 420 | 630 | 840 | 1050 | 1260 |
| 35 | V/V(fpm) | 241 | 482 | 723 | 964 | 1205 | 1446 |

ATC Climb Rate to 3600

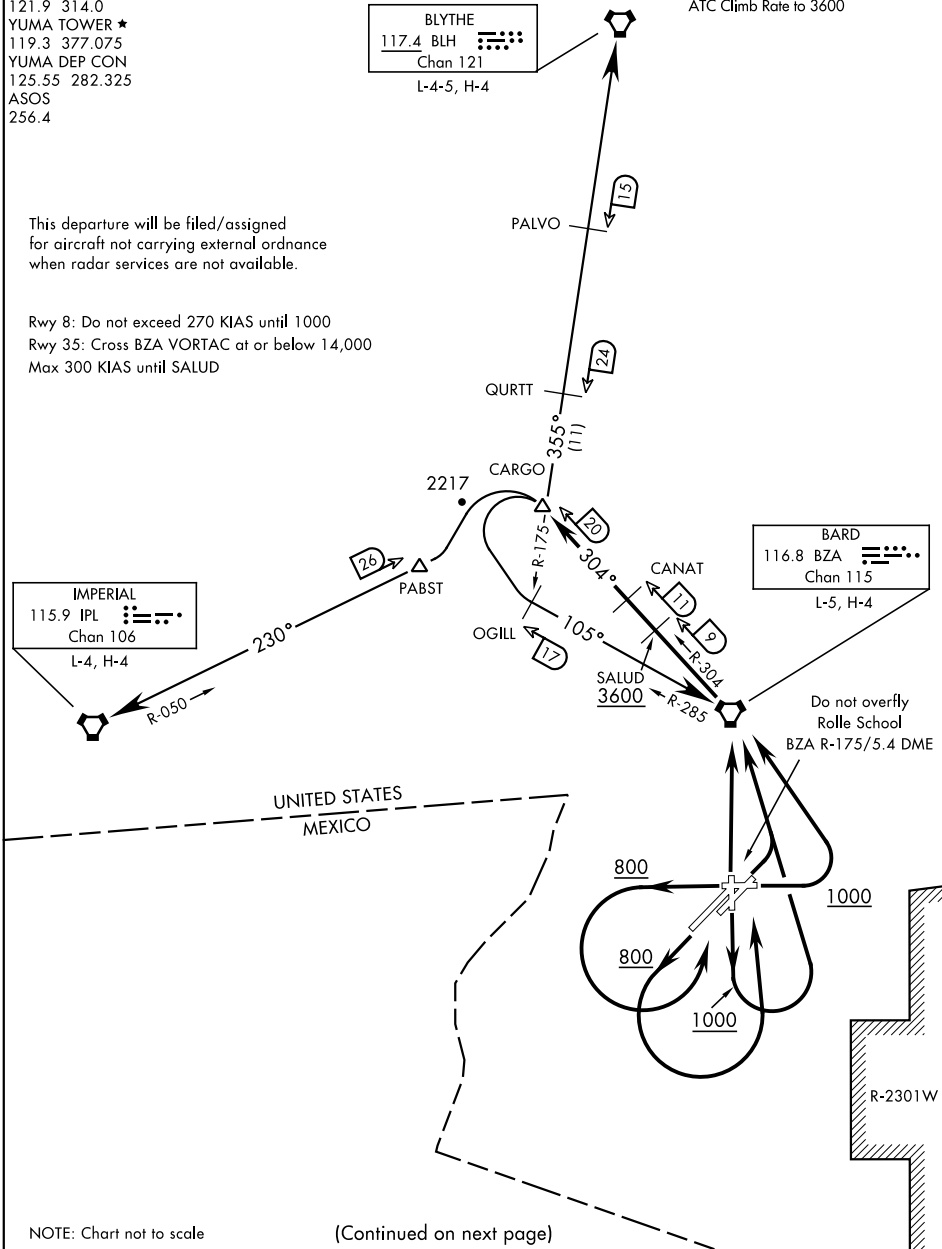
BLYTHE
 117.4 BLH
 Chan 121
 L-4-5, H-4

BARD
 116.8 BZA
 Chan 115
 L-5, H-4

IMPERIAL
 115.9 IPL
 Chan 106
 L-4, H-4

This departure will be filed/assigned for aircraft not carrying external ordnance when radar services are not available.

Rwy 8: Do not exceed 270 KIAS until 1000
 Rwy 35: Cross BZA VORTAC at or below 14,000
 Max 300 KIAS until SALUD



SW-4, 25 MAR 2021 to 22 APR 2021

SW-4, 25 MAR 2021 to 22 APR 2021

NOTE: Chart not to scale

(Continued on next page)

CARGO NINE DEPARTURE (CARGO9•CARGO)

YUMA, ARIZONA

YUMA MCAS/YUMA INTL (KNYL)

Orig 24MAY18