

WAAS CH 86232 W13A	APP CRS 126°	Rwy Idg 5601 TDZE 593 Apt Elev 595
--	------------------------	---

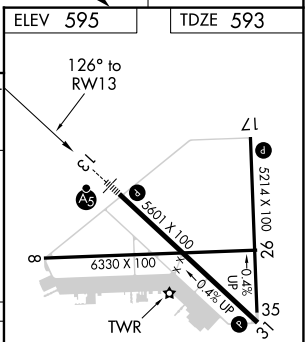
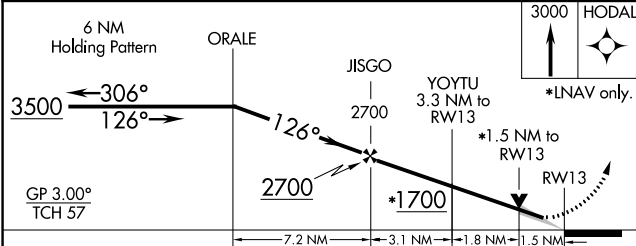
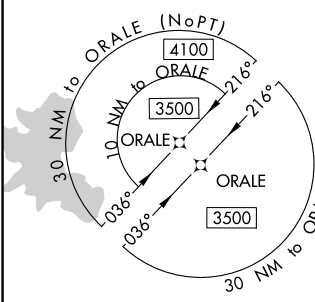
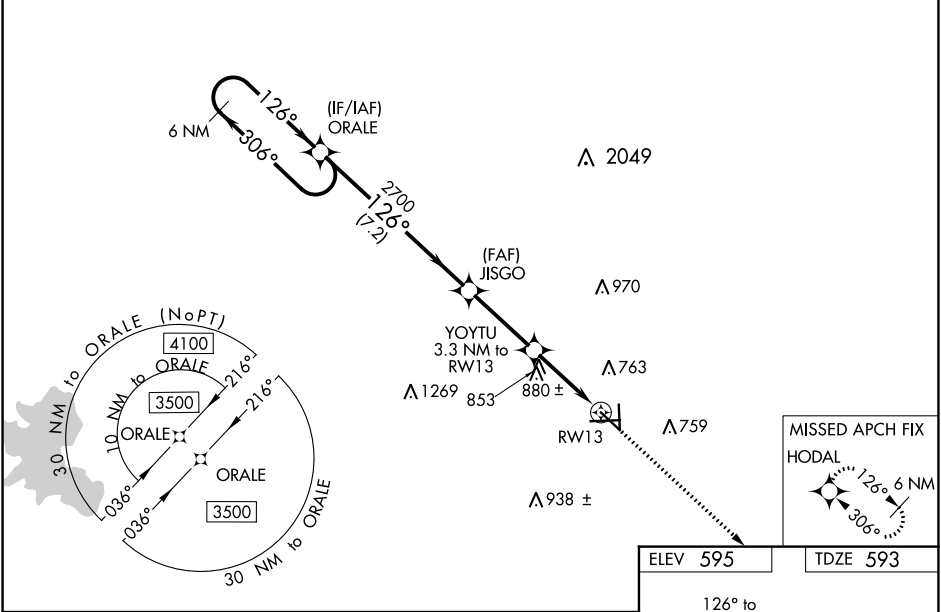
RNAV (GPS) RWY 13

SAN MARCOS RGNL (HYI)

▼ Baro-VNAV NA when using New Braunfels altimeter setting. For uncompensated Baro-VNAV systems, LNAV/VNAV NA below -1.6°C (3°F) or above 54°C (130°F). When local altimeter setting not received, use New Braunfels altimeter setting and increase all DA 43 feet and all MDA 60 feet; increase LNAV/VNAV all Cats, LNAV Cat C/D/E and Circling Cat C/D visibility ½ mile. For inoperative MALS, increase LPV Cat E visibility to ¾, LNAV/VNAV Cat E visibility to 1½ and LNAV Cat E visibility to 1½. For inoperative MALS when using New Braunfels altimeter setting, increase LPV Cat E visibility to ¾, LNAV/VNAV Cat E visibility to 1½ and LNAV Cat E visibility to 1¾. Circling NA for Cat E SW of Rwy 13-31. DME/DME RNP-0.3 NA. VDP NA with New Braunfels altimeter setting.

MALS
MISSED APPROACH:
Climb to 3000 direct
HODAL and hold.

ATIS ★ 120.825	AUSTIN APP CON 119.0 370.85	SAN MARCOS TOWER ★ 126.825 (CTAF)	GND CON 120.125	CLNC DEL 120.125	CLNC DEL 121.35 (when twr closed)
--------------------------	---------------------------------------	---	---------------------------	----------------------------	--



CATEGORY	A	B	C	D	E
LPV DA		793-½	200 (200-½)		
LNAV/VNAV DA		946-5/8	353 (400-5/8)		
LNAV MDA	1120-½	527 (600-½)	1120-1	527 (600-1)	
CIRCLING	1120-1	525 (600-1)	1240-1¾ 645 (700-1¾)	1320-2¼ 725 (800-2¼)	1340-2¾ 745 (800-2¾)

MIRL Rwy 8-26, 13-31, and 17-35
REIL Rwy 8 and 26

SC-3, 25 MAR 2021 to 22 APR 2021

SC-3, 25 MAR 2021 to 22 APR 2021