

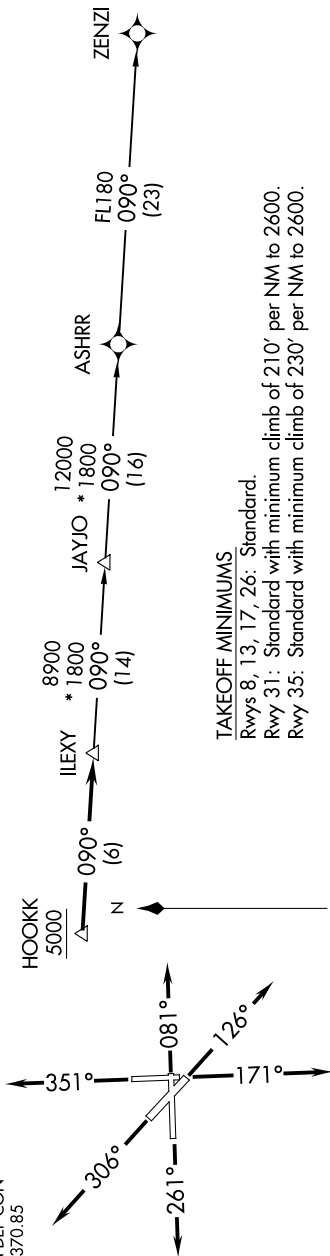
# ILEXY TWO DEPARTURE (RNAV)

SC-3, 25 MAR 2021 to 22 APR 2021

## TOP ALTITUDE: ASSIGNED BY ATC

ATIS \*  
 120.825  
 CLNC DEL (When twr closed)  
 121.35  
 GND CON  
 120.125  
 SAN MARCOS TOWER \*  
 126.825  
 AUSTIN DEP CON  
 119.0 370.85

NOTE: RADAR required.  
 NOTE: DME/DME/IRU or GPS required.  
 NOTE: RNAV-1.  
 NOTE: Houston terminal area arrivals expect routing from ILEXY.  
 NOTE: JAYJO transition to join V306 only.



### TAKEOFF MINIMUMS

Rwys 8, 13, 17, 26: Standard.  
 Rwy 31: Standard with minimum climb of 210' per NM to 2600.  
 Rwy 35: Standard with minimum climb of 230' per NM to 2600.

NOTE: Chart not to scale.

## DEPARTURE ROUTE DESCRIPTION

- TAKEOFF RWY 8: Climb heading 081° or as assigned by ATC for RADAR vectors to cross HOOKK at or above 5000, thence....
- TAKEOFF RWY 13: Climb heading 126° or as assigned by ATC for RADAR vectors to cross HOOKK at or above 5000, thence....
- TAKEOFF RWY 17: Climb heading 171° or as assigned by ATC for RADAR vectors to cross HOOKK at or above 5000, thence....
- TAKEOFF RWY 26: Climb heading 261° or as assigned by ATC for RADAR vectors to cross HOOKK at or above 5000, thence....
- TAKEOFF RWY 31: Climb heading 306° or as assigned by ATC for RADAR vectors to cross HOOKK at or above 5000, thence....
- TAKEOFF RWY 35: Climb heading 351° or as assigned by ATC for RADAR vectors to cross HOOKK at or above 5000, thence....

... on track 090° to ILEXY, then on transition. Maintain altitude assigned by ATC. Expect filed altitude 10 minutes after departure.

JAYJO TRANSITION (ILEXY2.JAYJO):  
 ZENZI TRANSITION (ILEXY2.ZENZI):

# ILEXY TWO DEPARTURE (RNAV)

SC-3, 25 MAR 2021 to 22 APR 2021