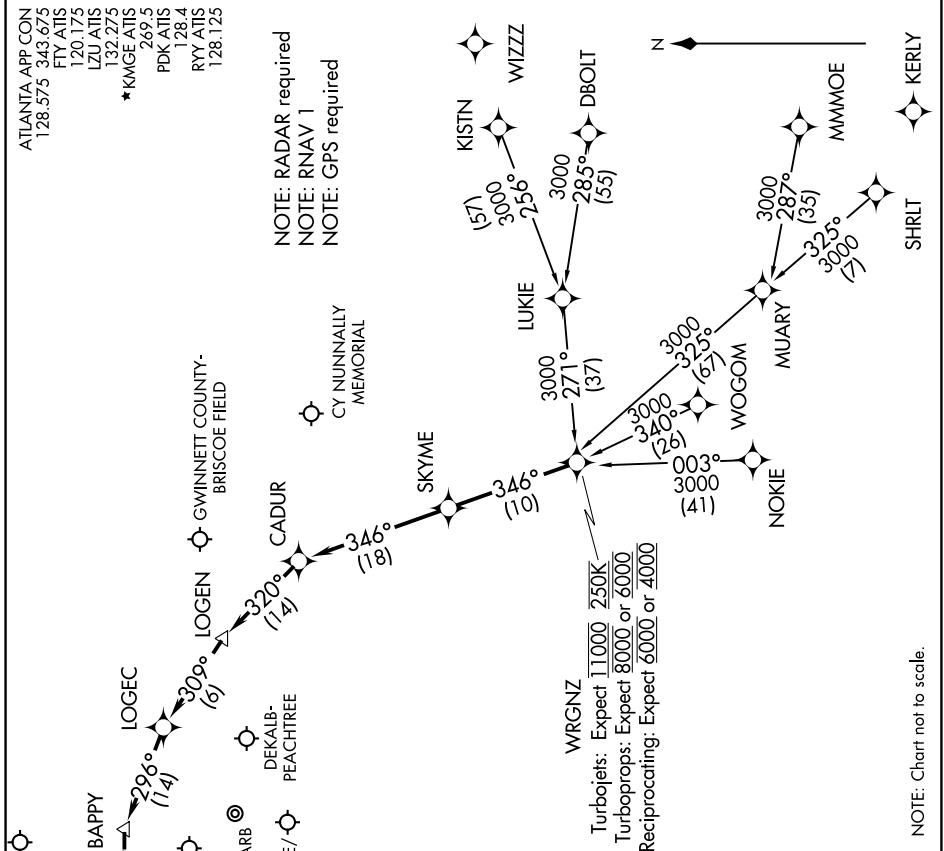


# WRGNZ THREE ARRIVAL (RNAV)

SE-4, 25 MAR 2021 to 22 APR 2021



**ARRIVAL ROUTE DESCRIPTION**

DBOLT TRANSITION (DBOLT.WRGNZ3)  
KISTN TRANSITION (KISTN.WRGNZ3)  
LUKIE TRANSITION (LUKIE.WRGNZ3)  
MMM0E TRANSITION (MMM0E.WRGNZ3)  
NOKIE TRANSITION (NOKIE.WRGNZ3)  
SHRLT TRANSITION (SHRLT.WRGNZ3)  
WOGOM TRANSITION (WOGOM.WRGNZ3)

From WRGNZ on track 346° to SKYME, then on track 346° to CADUR, then on track 320° to LOGEN, then on track 309° to BAPPY, then on track 296° to LOGEC, then on track 275° to DECLIN, then on track 275°. Expect RADAR vectors to final approach course.

**LOST COMMUNICATIONS:** Cross WRGNZ at or below 11000, cross CADUR at or below 7000, cross DECLIN at 4000; after DECLIN proceed direct to desired approach IAF for filed airport.

NOTE: Chart not to scale.

SE-4, 25 MAR 2021 to 22 APR 2021

# WRGNZ THREE ARRIVAL (RNAV)