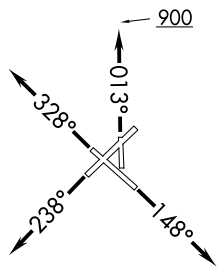


COASTAL EIGHT DEPARTURE

D-ATIS 118.15
CLNC DEL
121.75 322.3
GND CON
121.9 348.6
CPDLC
BRADLEY TOWER
120.3 351.8
YANKEE DEP CON
123.95 290.55

**TOP ALTITUDE:
4000**



HARTFORD
114.9 HFD
Chan 96
N41°38.47'-W72°32.85'

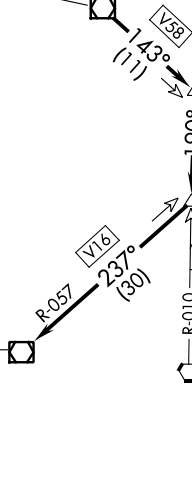
THUMB
N41°31.40'
W72°21.53'

YODER
N41°17.38'
W72°20.55'

CALVERTON
117.2 CCC
Chan 119
N40°55.78'-W72°47.93'

HAMPTON
113.6 HTO
Chan 83

NOTE: RADAR required.
NOTE: Initial departure headings are predicated on avoiding noise sensitive areas, flight crew awareness and compliance is important in minimizing noise impacts on surrounding communities.



TAKEOFF MINIMUMS:
Rwy 19: NA-Environmental.
Rwys 1, 6, 15, 24: Standard.
Rwy 33: Standard with minimum climb of 340' per NM to 1000.

(NARRATIVE ON FOLLOWING PAGE)

NOTE: Chart not to scale.

NE-1, 25 MAR 2021 to 22 APR 2021

NE-1, 25 MAR 2021 to 22 APR 2021