

AIRPORT DIAGRAM

AL-460 (FAA)

BRADLEY INTL (BDL)
WINDSOR LOCKS, CONNECTICUT

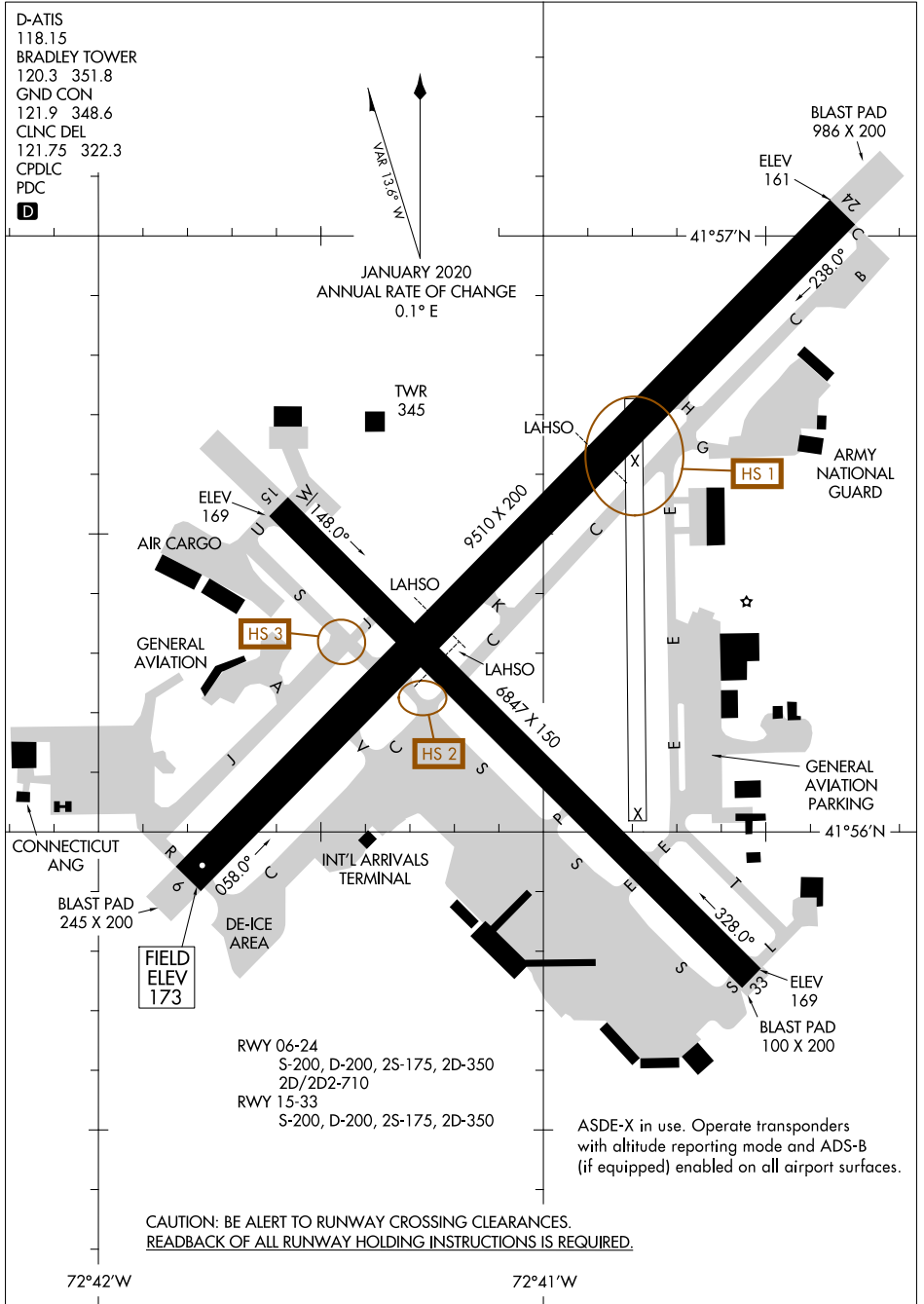
D-ATIS
118.15
BRADLEY TOWER
120.3 351.8
GND CON
121.9 348.6
CLNC DEL
121.75 322.3
CPDLC
PDC

D



NE-1, 25 MAR 2021 to 22 APR 2021

NE-1, 25 MAR 2021 to 22 APR 2021



RWY 06-24
S-200, D-200, 2S-175, 2D-350
2D/2D2-710

RWY 15-33
S-200, D-200, 2S-175, 2D-350

ASDE-X in use. Operate transponders with altitude reporting mode and ADS-B (if equipped) enabled on all airport surfaces.

CAUTION: BE ALERT TO RUNWAY CROSSING CLEARANCES.
READBACK OF ALL RUNWAY HOLDING INSTRUCTIONS IS REQUIRED.