

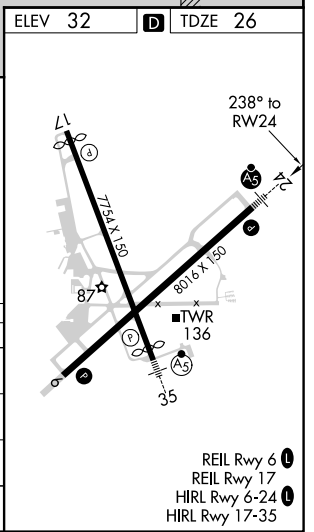
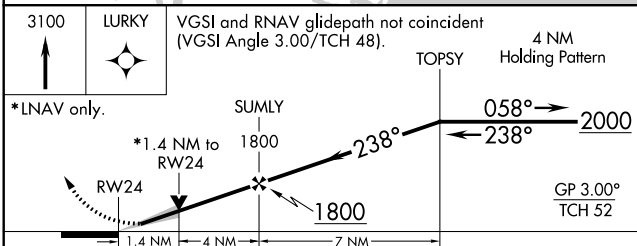
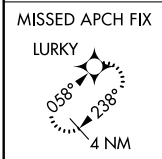
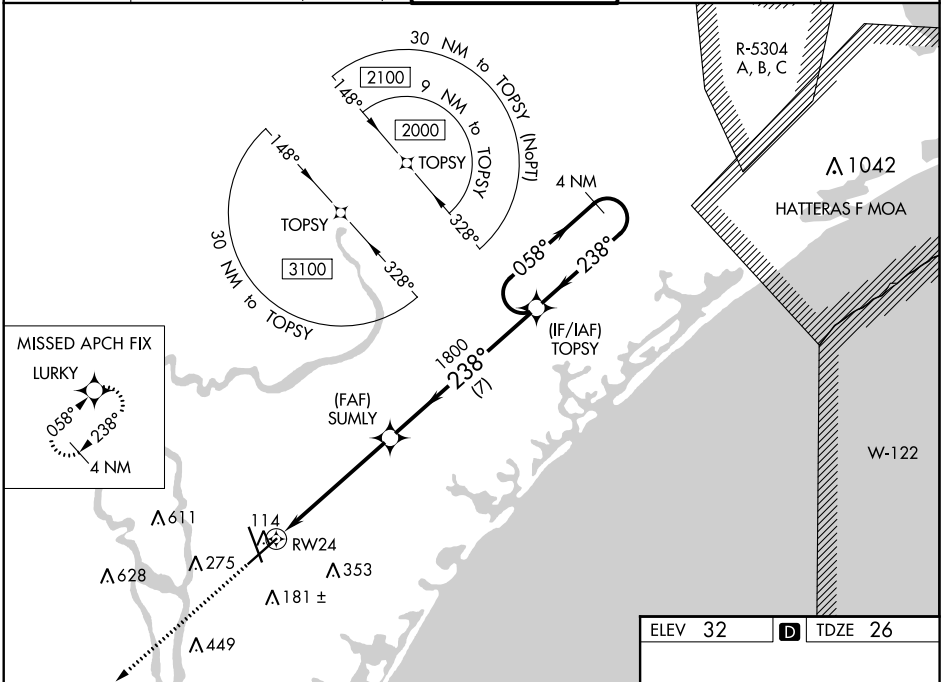
WAAS CH 45899 W24A	APP CRS 238°	Rwy Idg 8016 TDZE 26 Apt Elev 32
--	------------------------	---

RNAV (GPS) RWY 24

WILMINGTON INTL (ILM)

<p>For uncompensated Baro-VNAV systems, LNAV/VNAV NA below -7°C (20°F) or above 54°C (130°F). DME/DME RNP-0.3 NA. ** RVR 1800 authorized with use of FD or AP or HUD to DA.</p>	<p>MALSR</p>	<p>MISSED APPROACH: Climb to 3100 direct LURKY and hold.</p>
	<p>ATIS 124.975</p> <p>WILMINGTON APP CON * 118.25 284.65 (164°-343°) 135.75 317.425 (344°-163°)</p> <p>WILMINGTON TOWER * 119.9(CTAF) 239.3</p> <p>GND CON 121.9 348.6</p> <p>UNICOM 122.95</p>	

ATIS 124.975	WILMINGTON APP CON * 118.25 284.65 (164°-343°) 135.75 317.425 (344°-163°)	WILMINGTON TOWER * 119.9 (CTAF) 239.3	GND CON 121.9 348.6	UNICOM 122.95
------------------------	---	--	-------------------------------	-------------------------



CATEGORY	A	B	C	D
LPV DA **	226/24		200 (200-½)	
LNAV/VNAV DA	401/40		375 (400-¾)	
LNAV MDA	500/24	474 (500-½)	500/50	474 (500-1)
CIRCLING	560-1	528 (600-1)	720-2 688 (700-2)	920-3 888 (900-3)

SE-2, 25 MAR 2021 to 22 APR 2021

SE-2, 25 MAR 2021 to 22 APR 2021