

WAAS CH 90499 W17A	APP CRS 169°	Rwy Idg 6604 TDZE 32 Apt Elev 32
--	------------------------	---

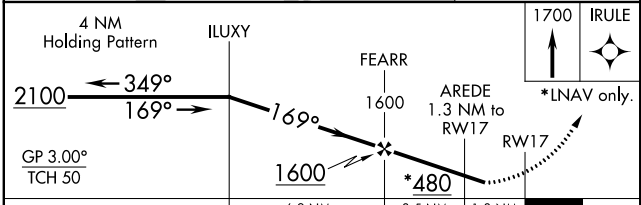
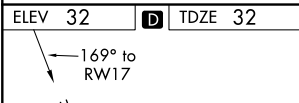
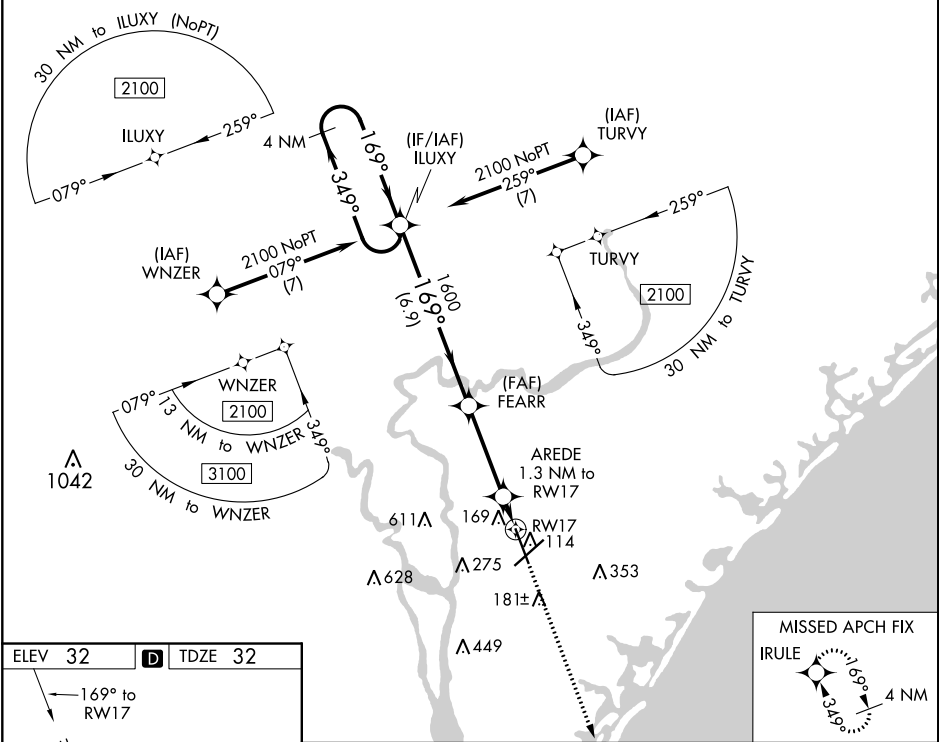
RNAV (GPS) RWY 17

WILMINGTON INTL (ILM)

⚠ ASR For uncompensated Baro-VNAV systems, LNAV/VNAV NA below -7°C (20°F) or above 54°C (130°F). DME/DME RNP-0.3 NA. Rwy 17 helicopter visibility reduction below ¾ SM NA.

MISSED APPROACH: Climb to 1700 direct IRULE and hold.

ATIS 124.975	WILMINGTON APP CON * 118.25 284.65 (164°-343°) 135.75 317.425 (344°-163°)	WILMINGTON TOWER * 119.9 (CTAF) 0 239.3	GND CON 121.9 348.6	UNICOM 122.95
------------------------	---	--	-------------------------------	-------------------------



CATEGORY	A	B	C	D
LPV DA	369-1/8 337 (400-1/8)			
LNAV/VNAV DA	405-1/4 373 (400-1/4)			
LNAV MDA	420-1	388 (400-1)	420-1/8 388 (400-1/8)	
C CIRCLING	560-1	528 (600-1)	720-2 688 (700-2)	920-3 888 (900-3)