

LOC I-GMX <b>111.55</b>	APP CRS <b>238°</b>	Rwy Idg <b>8016</b> TDZE <b>26</b> Apt Elev <b>32</b>
----------------------------	------------------------	---

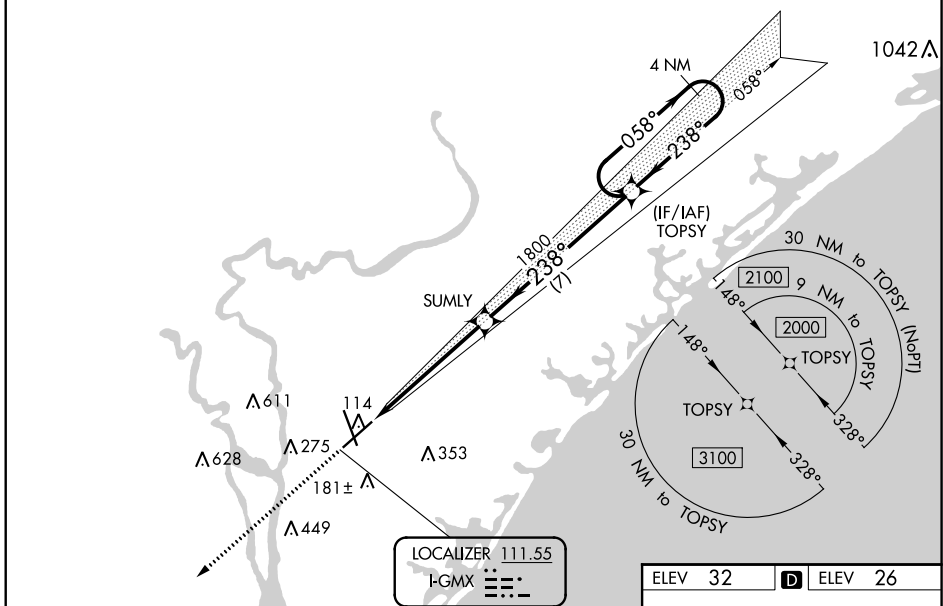
# ILS Z RWY 24

WILMINGTON INTL (ILM)

ASR	RNAV 1-GPS required. **RVR 1800 authorized with use of FD or AP or HUD to DA.	MALSRR AS	MISSED APPROACH: Climb to 3100 direct LURKY and hold.
-----	--	--------------	---

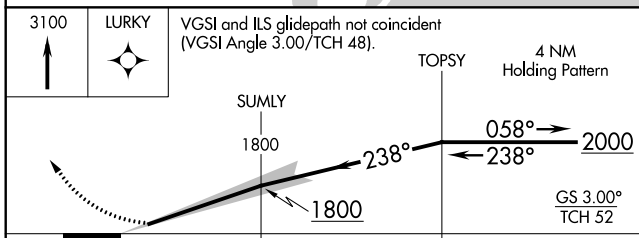
ATIS <b>124.975</b>	WILMINGTON APP CON * <b>118.25 284.65</b> (164°-343°) <b>135.75 317.425</b> (344°-163°)	WILMINGTON TOWER * <b>119.9</b> (CTAF) <b>239.3</b>	GND CON <b>121.9 348.6</b>	UNICOM <b>122.95</b>
------------------------	---	--	-------------------------------	-------------------------

## RNAV 1-GPS or RADAR REQUIRED



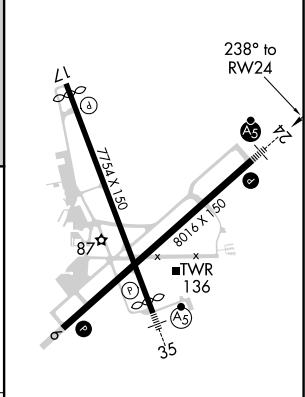
SE-2, 25 MAR 2021 to 22 APR 2021

SE-2, 25 MAR 2021 to 22 APR 2021



CATEGORY	A	B	C	D
S-ILS 24**	226/24	200 (200-1/2)		

ELEV 32	D	ELEV 26
---------	---	---------



- REIL Rwy 6
- REIL Rwy 17
- HIRL Rwy 6-24
- HIRL Rwy 17-35