

OAK HARBOR, WASHINGTON

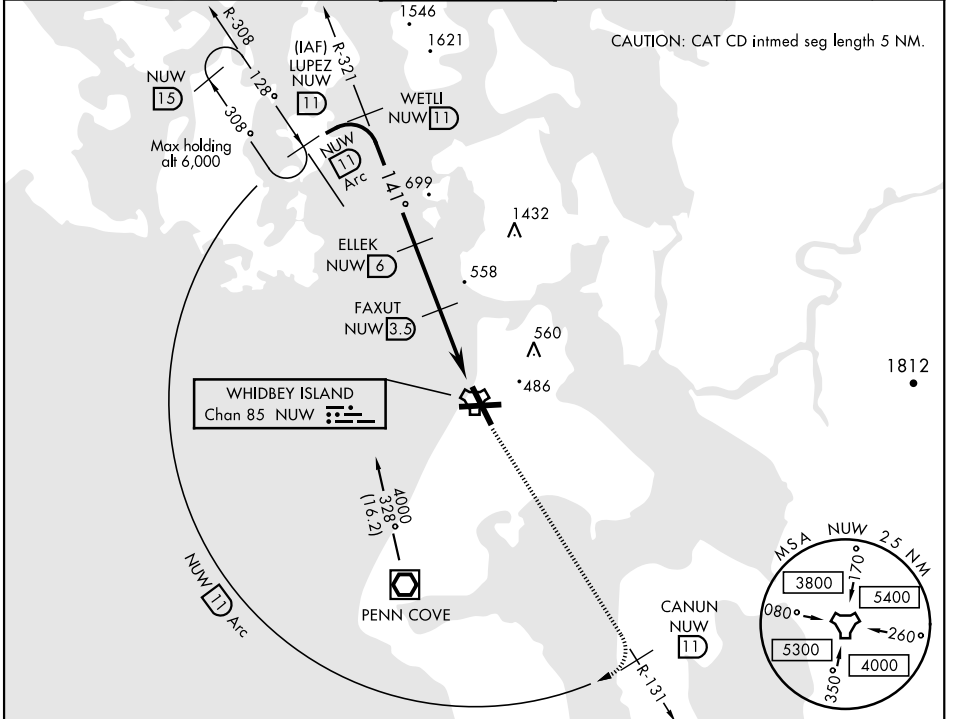
# TACAN RWY 14

TACAN NUV Chan <b>85</b>	APCH CRS <b>141°</b>	Rwy ldg TDZE <b>39</b> Arprt Elev <b>47</b>	AL-451 [USN]	WHIDBEY ISLAND NAS (AULT FLD) (KNUW)
-----------------------------	-------------------------	---	--------------	--------------------------------------

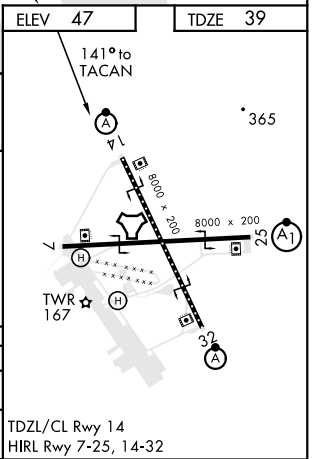
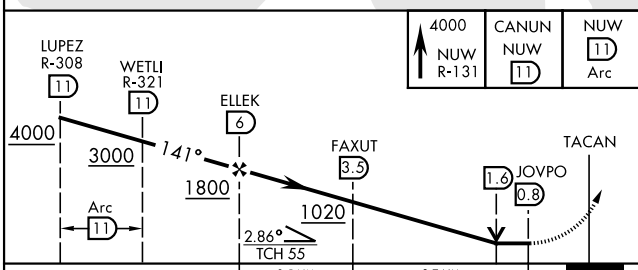
▼ \*When ALS inop, increase CAT AB vis to 1 mile, CAT CD to 1½ miles.

ALS-F-2
MISSED APPROACH: Climb to 4000 via NUW TACAN R-131 to CANUN, then arc SW of NUW via 11 DME Arc to LUPEZ and hold.

ATIS <b>134.15 281.5</b>	WHIDBEY APP CON <b>120.7 270.8</b> EAST <b>118.2 285.65</b> WEST	WHIDBEY TOWER <b>127.9 340.2</b>	GND CON <b>121.75 336.4</b>	CLNC DEL <b>135.1 379.9</b>	ASR/PAR
-----------------------------	---	-------------------------------------	--------------------------------	--------------------------------	---------



EMERG SAFE ALT 100 NM 16,500	ELEV <b>47</b>	TDZE <b>39</b>
------------------------------	----------------	----------------



CATEGORY	A	B	C	D	TDZL/CL Rwy 14 HIRL Rwy 7-25, 14-32
S-14 *	480-½	441 (500-½)	480-¾	441 (500-¾)	
CIRCLING	760-1 713 (800-1)	800-1 753 (800-1)	900-2½ 853 (900-2½)	900-2¾ 853 (900-2¾)	

OAK HARBOR, WASHINGTON      48°21'N-122°39'W      WHIDBEY ISLAND NAS (AULT FLD) (KNUW)

Amdt 2 21MAY20

# TACAN RWY 14

NW-1, 25 MAR 2021 to 22 APR 2021

NW-1, 25 MAR 2021 to 22 APR 2021