

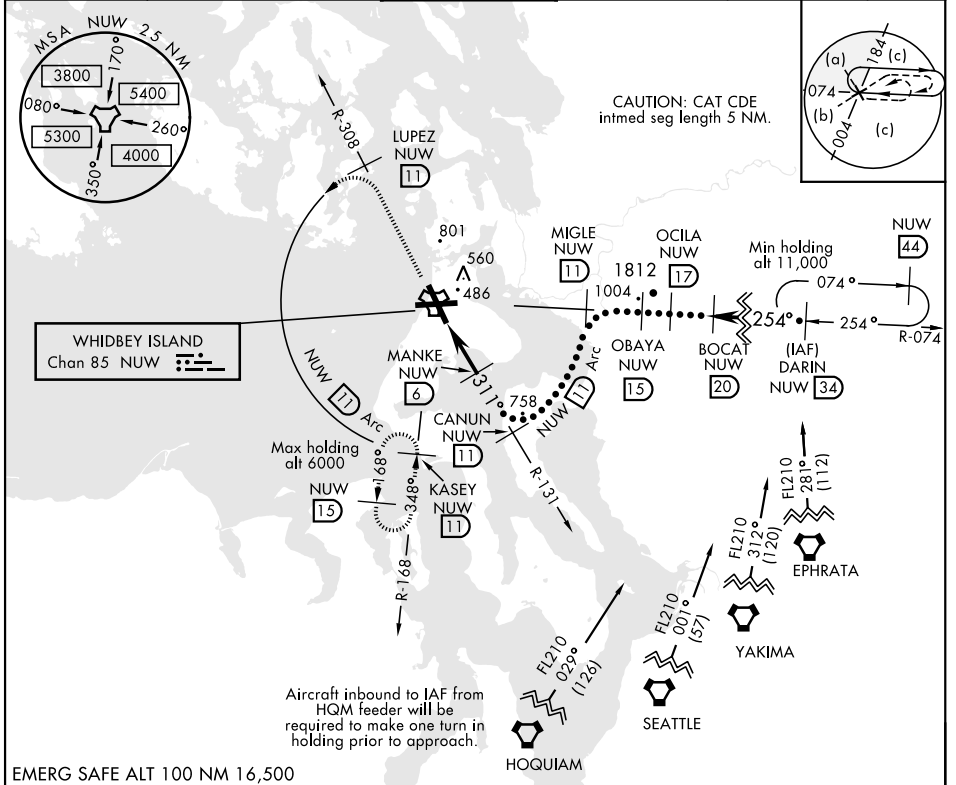
# HI-TACAN RWY 32

TACAN Chan <b>85</b>	APCH CRS <b>311°</b>	Rwy ldg TDZE <b>47</b> Arpt Elev <b>47</b>	JAL-451 [UN]	WHIDBEY ISLAND NAS (AULT FLD) (KNUW)
-------------------------	-------------------------	--	--------------	--------------------------------------

**▼** \* When ALS inop, increase CAT CDE vis to 1 3/8 miles.

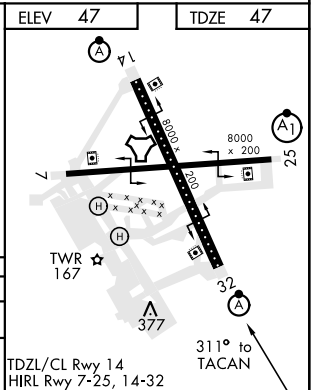
ALSF-2  MISSED APPROACH: Climb to 3000 via NUW TACAN R-308 to LUPEZ, then arc W of NUW via 11 DME Arc to KASEY and hold.

ATIS <b>134.15 281.5</b>	WHIDBEY APP CON <b>120.7 270.8 EAST</b> <b>118.2 285.65 WEST</b>	WHIDBEY TOWER <b>127.9 340.2</b>	GND CON <b>121.75 336.4</b>	CLNC DEL <b>135.1 379.9</b>	ASR/PAR
-----------------------------	--	-------------------------------------	--------------------------------	--------------------------------	---------



EMERG SAFE ALT 100 NM 16,500

3000 NUW R-308	LUPEZ NUW 11	NUW Arc 11	DARIN R-074 NUW 34
TACAN	NAVOE 1.8	MANKE 2.6	CANUN R-131 11
			MIGLE R-074 11
			OCILA 17
			BOCAT 20
			DARIN R-074 NUW 34
			FL 210
			↑ Or as assigned
			3.16° TCH 55
CATEGORY	C	D	E
S-32*	660-1 3/8	613 (700-1 3/8)	
CIRCLING	900-2 1/2 853 (900-2 1/2)	900-2 3/4 853 (900-2 3/4)	1200-3 1153 (1200-3)



# HI-TACAN RWY 32

NW-1, 25 MAR 2021 to 22 APR 2021

NW-1, 25 MAR 2021 to 22 APR 2021