

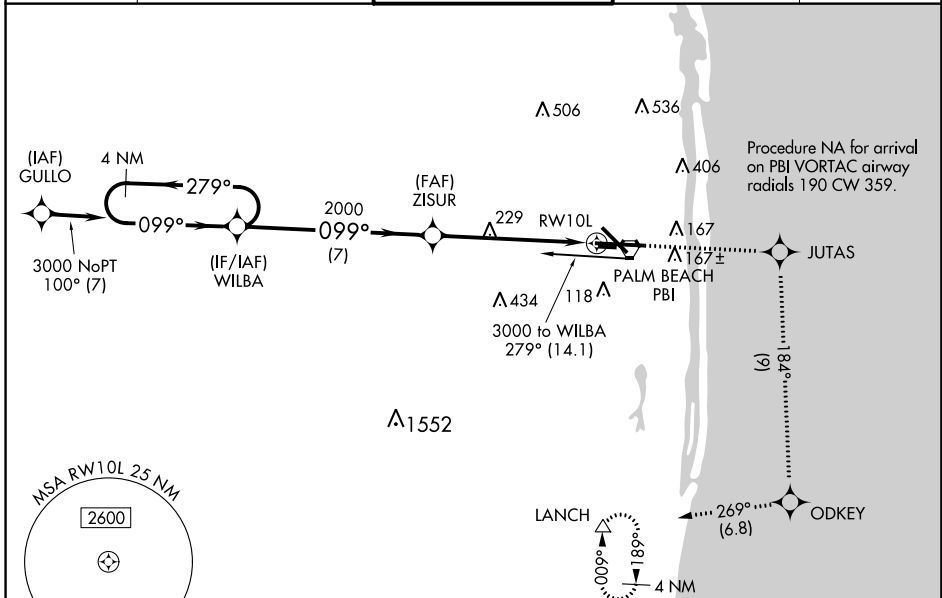
WAAS CH 97317 W10A	APP CRS 099°	Rwy Idg TDZE 16 Apt Elev 20	8800
--	------------------------	---	-------------

RNAV (GPS) Y RWY 10L

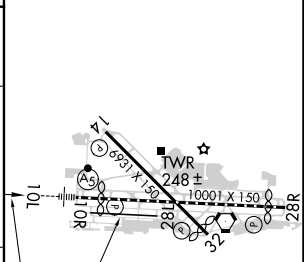
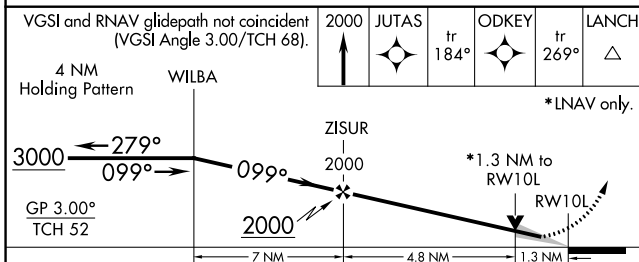
PALM BEACH INTL (PBI)

RNP APCH.	MALSR	MISSED APPROACH: Climb to 2000 direct JUTAS and on track 184° to ODKEY and on track 269° to LANCH and hold.
<p>⚠ For uncompensated Baro-VNAV systems, LNAV/VNAV NA below -15°C (5°F) or above 43°C (109°F). For inop ALS, increase LNAV Cats C/D visibility to 1 3/8 SM. # RVR 1800 authorized with use of FD or AP or HUD to DA.</p>		

D-ATIS 123.75	PALM BEACH APP CON 128.3 317.4	PALM BEACH TOWER 119.1 257.8	GND CON 121.9 284.6	CLNC DEL 121.6 284.6
-------------------------	--	--	-------------------------------	--------------------------------



ELEV 20	TDZE 16
---------	---------



CATEGORY	A	B	C	D
LPV DA #	216/24		200 (200-1/2)	
LNAV/VNAV DA	404/40		388 (400-3/4)	
LNAV MDA	500/24	484 (500-1/2)	500/50	484 (500-1)
CIRCLING	560-1	540 (600-1)	680-1 3/4 660 (700-1 3/4)	780-2 1/2 760 (800-2 1/2)

HIRL Rwy 10L-28R
REIL Rwy 10R, 14, 28L, 28R and 32
MIRL Rwy 14-32 and 10R-28L

SE-3, 25 MAR 2021 to 22 APR 2021

SE-3, 25 MAR 2021 to 22 APR 2021