

APP CRS	Rwy Idg	<b>6000</b>
<b>141°</b>	TDZE	<b>17</b>
	Apt Elev	<b>19</b>

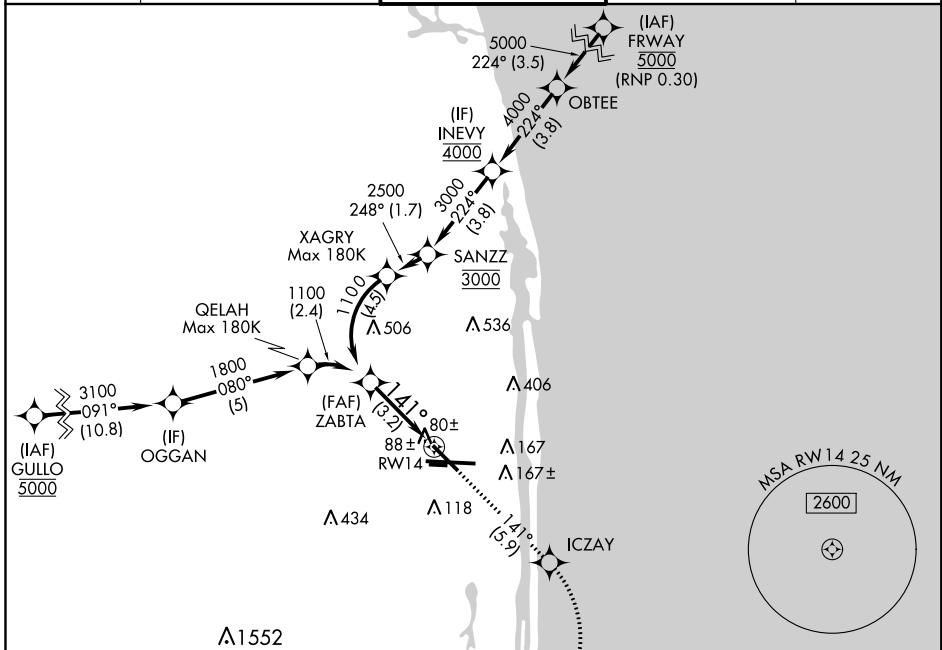
# RNAV (RNP) Z RWY 14

PALM BEACH INTL (PBI)

**▼** RF and GPS required. For uncompensated Baro-VNAV systems, procedure NA below 3°C (38°F) or above 47°C (118°F). When VGSI inop, procedure NA at night.

**MISSED APPROACH:** (Do not exceed 200 KIAS until VNDAL) Climb to 2000 on track 141° to ICZAY and right turn to VNDAL and on track 275° to LANCH and hold.

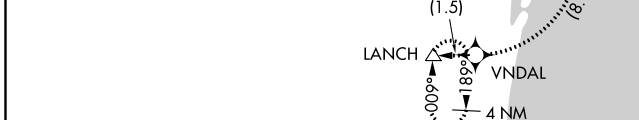
D-ATIS	PALM BEACH APP CON	PALM BEACH TOWER	GND CON	CLNC DEL
<b>123.75</b>	<b>128.3 317.4</b>	<b>119.1 257.8</b>	<b>121.9 284.6</b>	<b>121.6 284.6</b>



SE-3, 25 MAR 2021 to 22 APR 2021

SE-3, 25 MAR 2021 to 22 APR 2021

ELEV	<b>19</b>	<b>D</b>	TDZE	<b>17</b>
------	-----------	----------	------	-----------



See planview for multiple IF locations.

Procedure Turn NA

ZABTA 1100

GP 3.00° TCH 51

2000 tr 141°

ICZAY

VNDAL tr 275°

LANCH

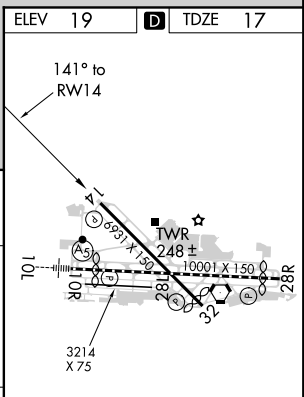
VGSI and RNAV glidepath not coincident (VGSI Angle 3.00/TCH 66).

1100

141°

RW14

3.2 NM



CATEGORY	A	B	C	D
RNP 0.11 DA		320-1	303 (400-1)	
RNP 0.30 DA		364-1¼	347 (400-1¼)	

**AUTHORIZATION REQUIRED**

HIRL Rwy 10L-28R  
REIL Rwys 10R, 14, 28L, 28R and 32  
MIRL Rwys 14-32 and 10R-28L