

# LMORE TWO DEPARTURE (RNAV)

SE-3, 25 MAR 2021 to 22 APR 2021

## DEPARTURE ROUTE DESCRIPTION

**TAKEOFF RWY 10L:** Climb heading 099° to 520, then direct CRRMN, then via track 154° to BUFIT, then right turn via track 244° to SHRKY, then via depicted route to LMORE. Thence...

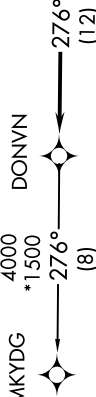
**TAKEOFF RWY 14:** Climb heading 141° to 520, then right turn direct BLNKT, then via depicted route to LMORE. Thence...

**TAKEOFF RWY 28R:** Climb heading 279° to 520, then direct CRYER, then via depicted route to LMORE. Thence...

**TAKEOFF RWY 32:** Climb heading 321° to 520, then left turn direct CRYER, then via depicted route to LMORE. Thence...

... via depicted route to DONVN. Maintain 4000 or as assigned by ATC. Expect clearance to filed altitude within 10 minutes after departure.

## MKYDGD TRANSITION (LMORE2.MKYDGD)

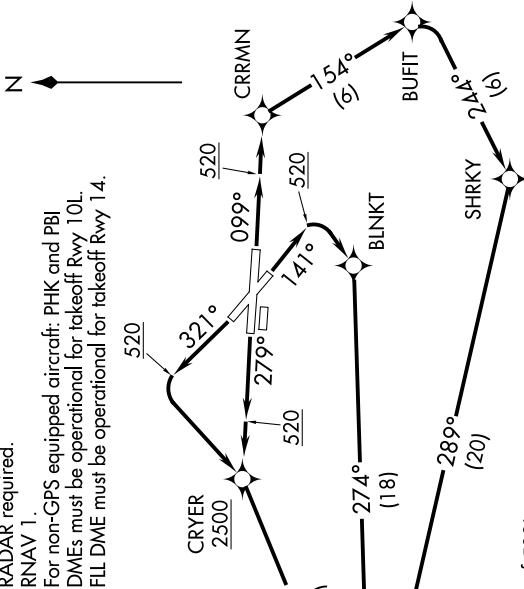


**TAKEOFF MINIMUMS:**  
 Rwy 10R, 28L: NA-ATC.  
 Rwy 14, 10L, 32: Standard with minimum climb of 500' per NM to 520.  
 Rwy 28R: Standard with minimum climb of 500' per NM to 520. ATC climb of 500' per NM to 2500.

## TOP ALTITUDE: 4000

D-AIIS 123.75  
 CLNC DEL 121.6 284.6  
 GND CON 121.9 284.6  
 PALM BEACH TOWER 119.1 257.8  
 PALM BEACH DEP CON 128.3 317.4 (North)  
 125.2 343.6 (South)

- NOTE: For Turbojets only.
- NOTE: If unable to accept minimum climb rates, advise ATC on initial contact.
- NOTE: Transponder code will be issued via PDC or Palm Beach CLNC DEL.
- NOTE: DME/DME/IRU or GPS required.
- NOTE: RADAR required.
- NOTE: RNAV 1.
- NOTE: For non-GPS equipped aircraft: PHK and PBI DMEs must be operational for takeoff Rwy 10L.
- NOTE: FLL DME must be operational for takeoff Rwy 14.



NOTE: Chart not to scale.

SE-3, 25 MAR 2021 to 22 APR 2021

# LMORE TWO DEPARTURE (RNAV)