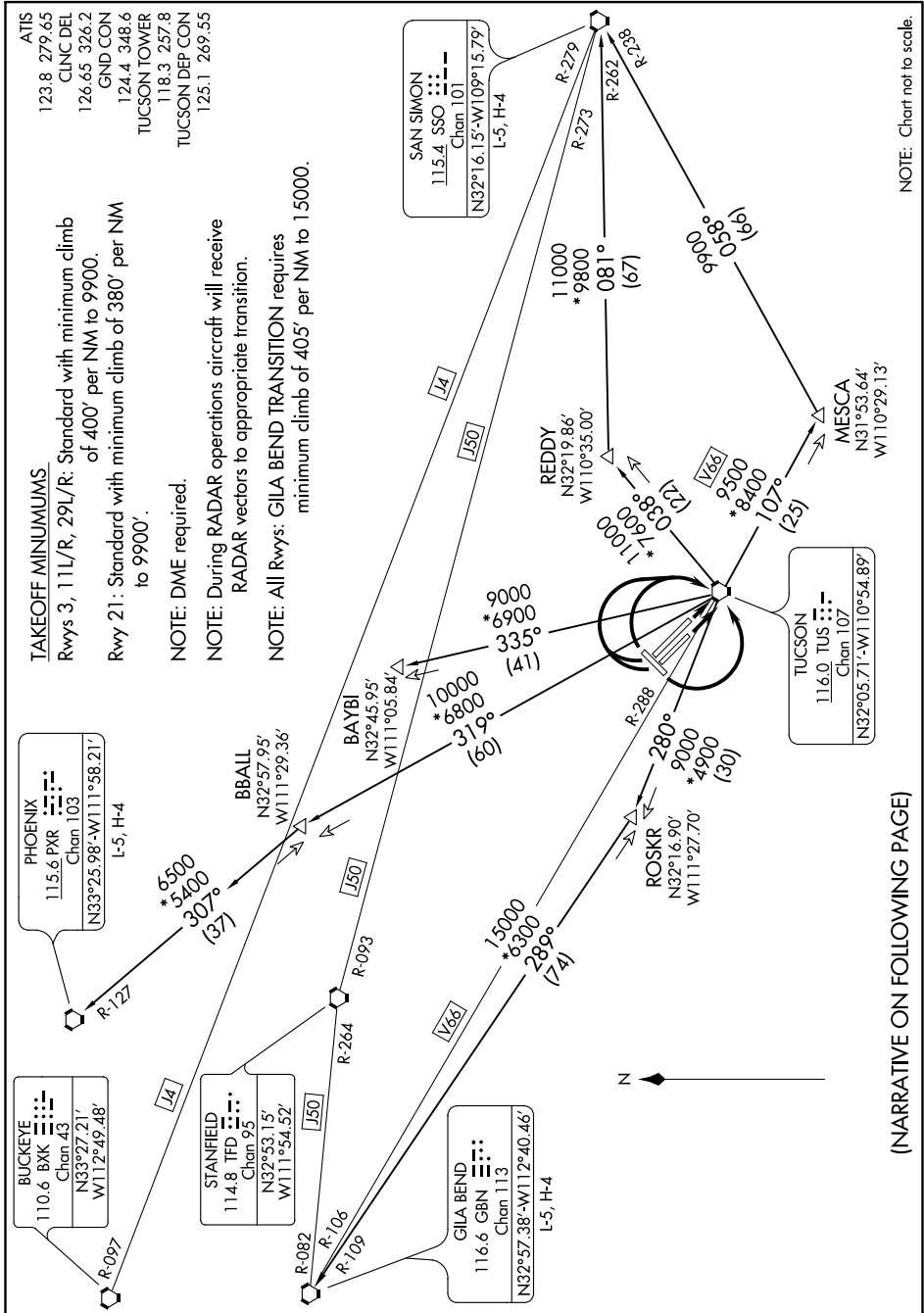


# TUCSON EIGHT DEPARTURE

AL-430 (FAA)

TUCSON INTL (TUS)  
TUCSON, ARIZONA

SW-4, 25 MAR 2021 to 22 APR 2021



ATIS  
123.8 279.65  
CLNC DEL  
126.65 326.2  
GND CON  
124.4 348.6  
TUCSON TOWER  
118.3 257.8  
TUCSON DEP CON  
125.1 269.55

**TAKEOFF MINIMUMS.**  
Rwys 3, 11L/R, 29L/R: Standard with minimum climb of 400' per NM to 9900.  
Rwy 21: Standard with minimum climb of 380' per NM to 9900'.

**NOTE:** DME required.  
**NOTE:** During RADAR operations aircraft will receive RADAR vectors to appropriate transition.  
**NOTE:** All Rwys: GILA BEND TRANSITION requires minimum climb of 405' per NM to 15000.

NOTE: Chart not to scale.

(NARRATIVE ON FOLLOWING PAGE)

SW-4, 25 MAR 2021 to 22 APR 2021

# TUCSON EIGHT DEPARTURE

TUCSON, ARIZONA  
TUCSON INTL (TUS)