

RNAV (GPS) Z RWY 11L

TUCSON INTL (TUS)

WAAS CH 82701 W 11A	APP CRS 123°	Rwy Idg 10996 TDZE 2599 Apt Elev 2643
-----------------------------------------	------------------------	------------------------------------------------------------------

RNP APCH:

▼ For uncompensated Baro-VNAV systems, LNAV/VNAV NA below -3°C or above 52°C. For inoperative ALS, increase LNAV/VNAV all Cats to RVR 5500 and increase LNAV Cat C, D and E visibilities to 2 SM.

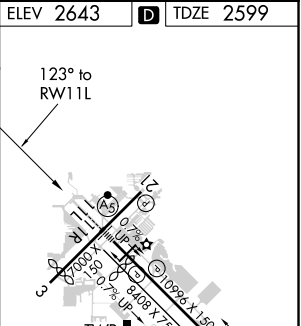
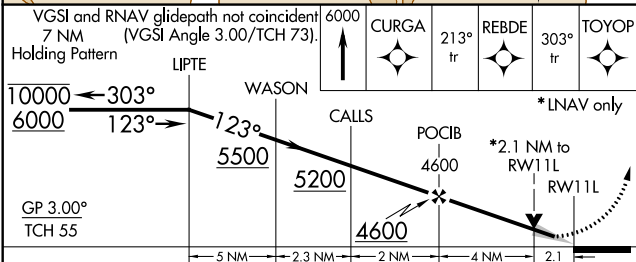


MISSED APPROACH: Climb to 6000 (Cat E 8000) direct CURGA and on 213° track to REBDE and on 303° track to TOYOP and hold.

ATIS 123.8 279.65	TUCSON APP CON 119.4 318.1	TUCSON TOWER 118.3 257.8	GND CON 124.4 348.6	CLNC DEL 126.65 326.2
-----------------------------	--------------------------------------	------------------------------------	-------------------------------	---------------------------------



ELEV 2643	TDZE 2599
-----------	-----------



CATEGORY	A	B	C	D	E
LPV DA	2849/24		250 (300-½)		
LNAV/VNAV DA	2967/40		368 (400-¾)		
LNAV MDA	3320-24	721 (700-½)	3320-1½	721 (700-1%)	3320-1¾ 721 (700-1¾)
CIRCLING	3320-1	677 (700-1)	3320-2 677 (700-2)	3320-2¼ 677 (700-2¼)	3800-3 1157 (1200-3)

HIRL Rwy 11L-29R
MIRL Rwys 3-21 and 11R-29L
REIL Rwys 21, 29L and 29R

SW-4, 25 MAR 2021 to 22 APR 2021

SW-4, 25 MAR 2021 to 22 APR 2021