

LOC/DME I-TUS 111.7 Chan 54	APP CRS 303°	Rwy Idg TDZE 10996 2643 Apt Elev 2643
---	------------------------	---

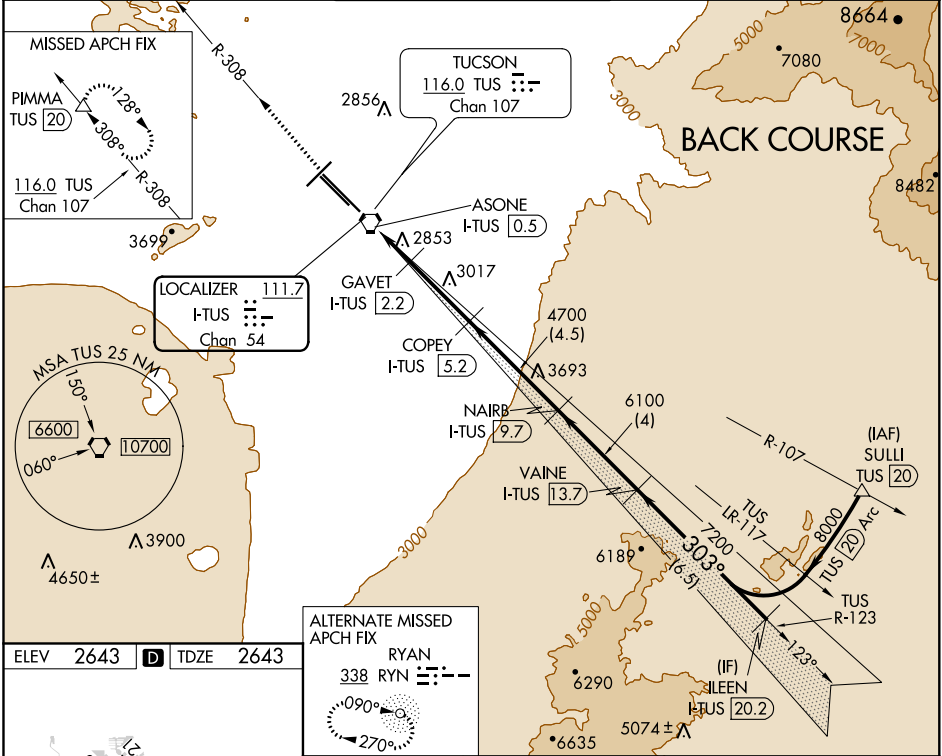
LOC BC RWY 29R

TUCSON INTL (TUS)

DME required for procedure entry. DME required.

MISSED APPROACH: Climb to 6800 on TUS VORTAC R-308 to PIMMA/TUS VORTAC 20 DME and hold.

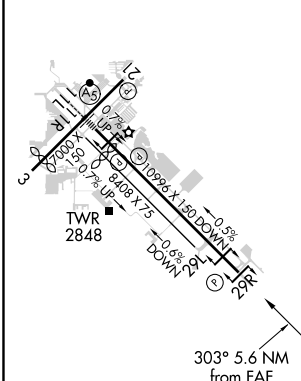
ATIS 123.8 279.65	TUCSON APP CON 119.4 318.1	TUCSON TOWER 118.3 257.8	GND CON 124.4 348.6	CLNC DEL 126.65 326.2
-----------------------------	--------------------------------------	------------------------------------	-------------------------------	---------------------------------



SW-4, 25 MAR 2021 to 22 APR 2021

SW-4, 25 MAR 2021 to 22 APR 2021

ELEV 2643	D	TDZE 2643
-----------	----------	-----------



6800 ↑ TUS R-308	PIMMA △	Use I-TUS DME when on the localizer course. VGSIs and descent angles not coincident (VGSi Angle 3.00/TCH 81). Disregard glide slope indications.	VAINE I-TUS 13.7 8000							
ASONE I-TUS 0.5 3640	GAVET I-TUS 2.2 4700	COPEY I-TUS 5.2 6100	NAIRB I-TUS 9.7 7200							
<table border="1"> <tr> <td></td> <td>0.9</td> <td>1.7</td> <td>3</td> <td>4.5</td> <td>6</td> <td>7.5</td> </tr> </table>					0.9	1.7	3	4.5	6	7.5
	0.9	1.7	3	4.5	6	7.5				

HIRL Rwy 11L-29R
MIRL Rwys 3-21 and 11R-29L
REIL Rwys 21, 29L and 29R

TUCSON, ARIZONA
Amdt 8B 20JUN19

32°07'N-110°56'W

TUCSON INTL (TUS)
LOC BC RWY 29R

CATEGORY	A	B	C	D	E
S-29R	3140-1	497 (500-1)	3140-1 $\frac{3}{8}$	497 (500-1 $\frac{3}{8}$)	
CIRCLING	3160-1 517 (600-1)	3220-1 577 (600-1)	3220-1 $\frac{1}{2}$ 577 (600-1 $\frac{1}{2}$)	3220-2 577 (600-2)	3800-3 1157 (1200-3)