

BURRO FOUR DEPARTURE (RNAV)

AL-430 (FAA)

TUCSON INTL (TUS)
TUCSON, ARIZONA

SW-4, 25 MAR 2021 to 22 APR 2021

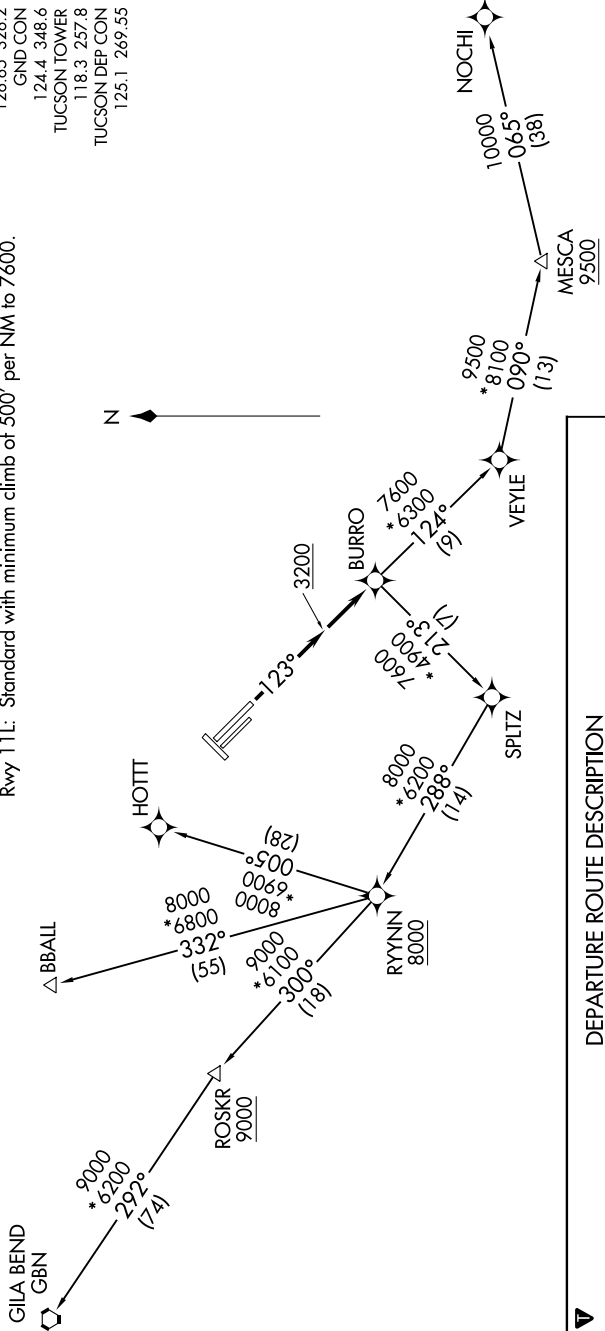
TOP ALTITUDE:
17000

TAKEOFF MINIMUMS

Rwys 3, 11R, 21, 29L, 29R: NA - ATC.

Rwy 11L: Standard with minimum climb of 500' per NM to 7600.

- ATIS 123.8 279.65
- CLNC DEL 126.65 326.2
- GND CON 124.4 348.6
- TUCSON TOWER 118.3 257.8
- TUCSON DEP CON 125.1 269.55



NOTE: GPS required.
NOTE: RNAV 1.
NOTE: Chart not to scale.

DEPARTURE ROUTE DESCRIPTION

TAKEOFF RUNWAY 11L: Climb heading 123° to 3200 MSL, then direct BURRO, thence . . .

. . . via (transition) maintain 17000, expect filed altitude 10 minutes after departure.

- BBALL TRANSITION (BURRO4.BBALL)
- GILA BEND TRANSITION (BURRO4.GBN)
- HOTT TRANSITION (BURRO4.HOTT)
- NOCHI TRANSITION (BURRO4.NOCHI)

SW-4, 25 MAR 2021 to 22 APR 2021