

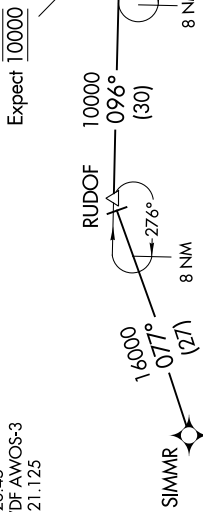
BLOND FIVE ARRIVAL (RNAV)

TAMPA, FLORIDA

SE-3, 25 MAR 2021 to 22 APR 2021

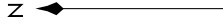
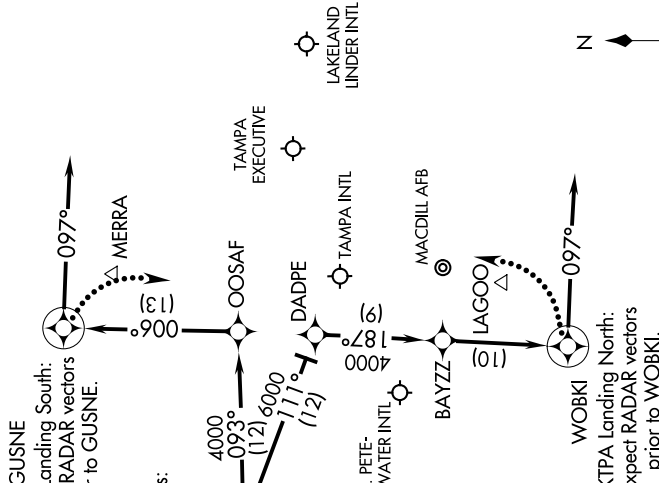
- TAMPA APP CON 118.8 239.3
- KMCF ATIS 133.825 270.1
- LAL ATIS 118.025
- PIE ATIS 134.5
- SRQ ATIS 124.375
- TPA D-ATIS ARR 126.45
- VDF AWOS-3 121.125

BLOND
VERTICAL NAVIGATION
PLANNING INFORMATION



AGASE
 Landing all Satellite Airports:
 Expect RADAR vectors
 prior to AGASE.

GUSNE
 KTPA Landing South:
 Expect RADAR vectors
 prior to GUSNE.



ARRIVAL ROUTE DESCRIPTION

SIMMR TRANSITION (SIMMR.BLOND5)

From **BLOND** on track 068° to **AGASE**. Thence on assigned runway transition.
LANDING NORTH RWY 1L/R: From over **AGASE** on track 111° to **DADPE**, then on track 187° to **BAYZZ**, then on track 187° to **WOBKI**, then on heading 097°. Expect RADAR vectors.
LANDING SOUTH RWY 19L/R: From over **AGASE** on track 093° to **OOSAF**, then on track 006° to **GUSNE**, then right turn on heading 097°. Expect RADAR vectors.

LOST COMMUNICATIONS

KTPA Landing South: Continue track to **GUSNE**, then turn right to intercept the Rwy 19R final approach course, conduct approach.
KTPA Landing North: Continue track to **WOBKI**, then turn left to intercept the Rwy 1L final approach course, conduct approach.

- NOTE: RADAR required.
- NOTE: RNAV 1.
- NOTE: DME/DME/IRU or GPS required.
- NOTE: Turbojet and Turboprop aircraft only.
- NOTE: Primary landing Rwy 1L/R, 19L/R.
- NOTE: For non-GPS equipped aircraft: **GUSNE** transition: **SRQ**, **PIE** must be operational; **WOBKI** transition: **SRQ**, **LAL**, **ORL**, and **PIE** must be operational.

BLOND FIVE ARRIVAL (RNAV)

(BLOND.BLOND5) 28FEB19

TAMPA, FLORIDA

SE-3, 25 MAR 2021 to 22 APR 2021