

TILLT TWO ARRIVAL (RNAV)

SOCAL APP CON
127.4 263.025
D-ATIS
126.0
JOHN WAYNE TOWER *
126.8 343.625

ARRIVAL ROUTE DESCRIPTION

From TILLT on track 126° to ZIPRR, then on track 134° to WURLL, then on track 134° to cross TCUPS at or above FL260, then on track 109° to cross RUKKI at or above FL210 and at 280K, then on track 109° to cross BAUBB between 11000 and 14000.

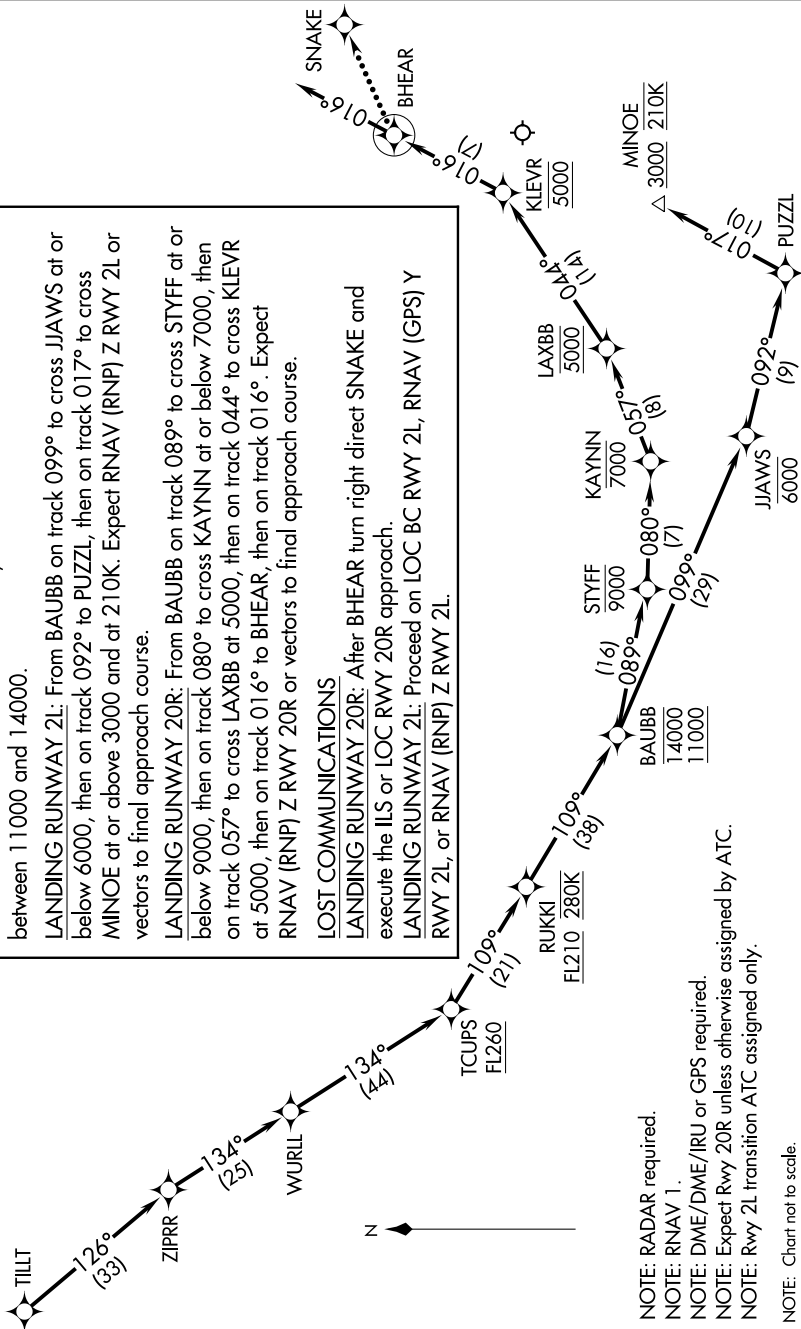
LANDING RUNWAY 2L: From BAUBB on track 099° to cross JJAWS at or below 6000, then on track 092° to PUZZL, then on track 017° to cross MINOE at or above 3000 and at 210K. Expect RNAV (RNP) Z RWY 2L or vectors to final approach course.

LANDING RUNWAY 20R: From BAUBB on track 089° to cross STYFF at or below 9000, then on track 080° to cross KAYNN at or below 7000, then on track 057° to cross LAXBB at 5000, then on track 044° to cross KLEVR at 5000, then on track 016° to BHEAR, then on track 016°. Expect RNAV (RNP) Z RWY 20R or vectors to final approach course.

LOST COMMUNICATIONS

LANDING RUNWAY 20R: After BHEAR turn right direct SNAKE and execute the ILS or LOC RWY 20R approach.

LANDING RUNWAY 2L: Proceed on LOC BC RWY 2L, RNAV (GPS) Y RWY 2L, or RNAV (RNP) Z RWY 2L.



- NOTE: RADAR required.
- NOTE: RNAV 1.
- NOTE: DME/DME/IRU or GPS required.
- NOTE: Expect Rwy 20R unless otherwise assigned by ATC.
- NOTE: Rwy 2L transition ATC assigned only.
- NOTE: Chart not to scale.

SW-3, 25 MAR 2021 to 22 APR 2021

SW-3, 25 MAR 2021 to 22 APR 2021