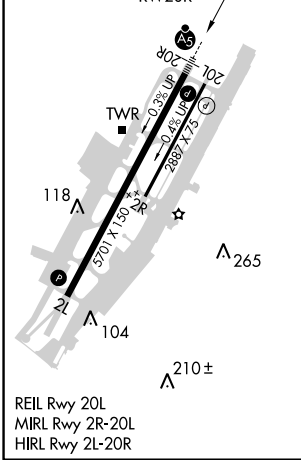
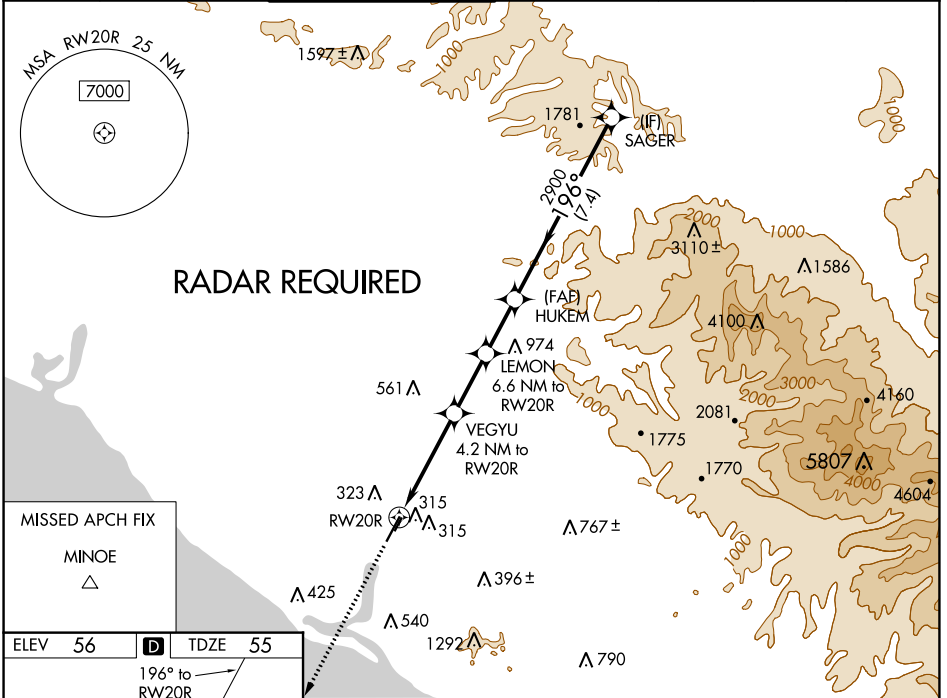


WAAS CH <b>99502</b> <b>W20A</b>	APP CRS <b>196°</b>	Rwy Idg TDZE <b>55</b> Apt Elev <b>56</b>	<b>5701</b>
----------------------------------------	------------------------	-------------------------------------------------	-------------

# RNAV (GPS) Y RWY 20R

JOHN WAYNE AIRPORT-ORANGE COUNTY (SNA)

For uncompensated Baro-VNAV systems, LNAV/VNAV NA below 5°C (41°F) or above 54°C (130°F). DME/DME RNP-0.3 NA. #RVR 1800 authorized with use of FD or AP or HUD to DA.	MALSR 	MISSED APPROACH: Climb to 3000 direct MINOE.				
	D-ATIS <b>126.0</b>	SOCAL APP CON <b>121.3 263.1</b>	JOHN WAYNE TOWER * <b>126.8 (CTAF) 0 343.625</b>	GND CON (EAST) <b>120.8</b> (WEST) <b>132.25</b>	CLNC DEL <b>118.0</b>	CPDLC



ELEV 56	<b>D</b>	TDZE 55	
196° to RWY 20R TWR 118 104 210± 265 5701 x 1330 x 28 2880 x 75 2880 x 75 REIL Rwy 20L MIRL Rwy 2R-20L HIRL Rwy 2L-20R			
3000 MINOE	VGS1 and RNAV glidepath not coincident (VGS1 Angle 3.00/TCH 63).		
*LNAV only.	VEGYU 4.2 NM to RWY 20R	LEMON 6.6 NM to RWY 20R	
1.5 NM to RWY 20R	2.7 NM	2.4 NM	
2200*	2900	3500	
1420*	2200*	2900	
1.5 NM	2.7 NM	2.2 NM	
		7.4 NM	
			GP 3.00° TCH 51

CATEGORY	A	B	C	D
LPV DA#	255/24		200 (200-½)	
LNAV/VNAV DA	516/60		461 (500-1¼)	
LNAV MDA	580/24	525 (600-½)	580/55	525 (600-1)
<b>C</b> CIRCLING	640-1	584 (600-1)	840-2¼ 784 (800-2¼)	1160-3 1104 (1200-3)

SW-3, 25 MAR 2021 to 22 APR 2021

SW-3, 25 MAR 2021 to 22 APR 2021