

APP CRS 016°	Rwy Idg 5701
	TDZE 56
	Apt Elev 56

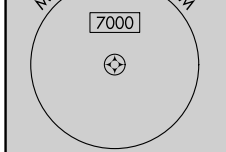
RNAV (RNP) Z RWY 2L

JOHN WAYNE AIRPORT-ORANGE COUNTY (SNA)

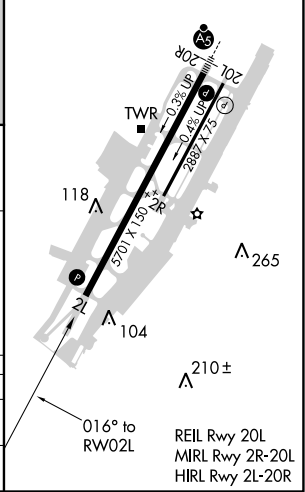
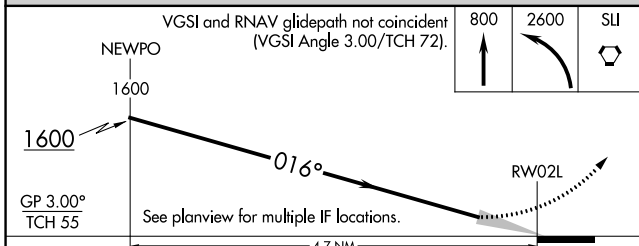
For uncompensated Baro-VNAV systems, procedure NA below 5°C (41°F) or above 54°C (130°F). GPS required.

MISSED APPROACH: Climb to 800 then climbing left turn to 2600 direct SLI VORTAC and hold.

D-ATIS 126.0	SOCAL APP CON 121.3 263.1	JOHN WAYNE TOWER * 126.8 (CTAF) 0 343.625	GND CON (EAST) 120.8 (WEST) 132.25	CLNC DEL 118.0	CPDLC	UNICOM 122.95
------------------------	-------------------------------------	--	--	--------------------------	-------	-------------------------



ELEV	56	D	TDZE	56
------	----	---	------	----



CATEGORY	A	B	C	D
RNP 0.30 DA		403-1 1/8	347 (400-1 1/8)	

AUTHORIZATION REQUIRED

SW-3, 25 MAR 2021 to 22 APR 2021

SW-3, 25 MAR 2021 to 22 APR 2021