

RNAV (RNP) Z RWY 20R

JOHN WAYNE AIRPORT-ORANGE COUNTY (SNA)

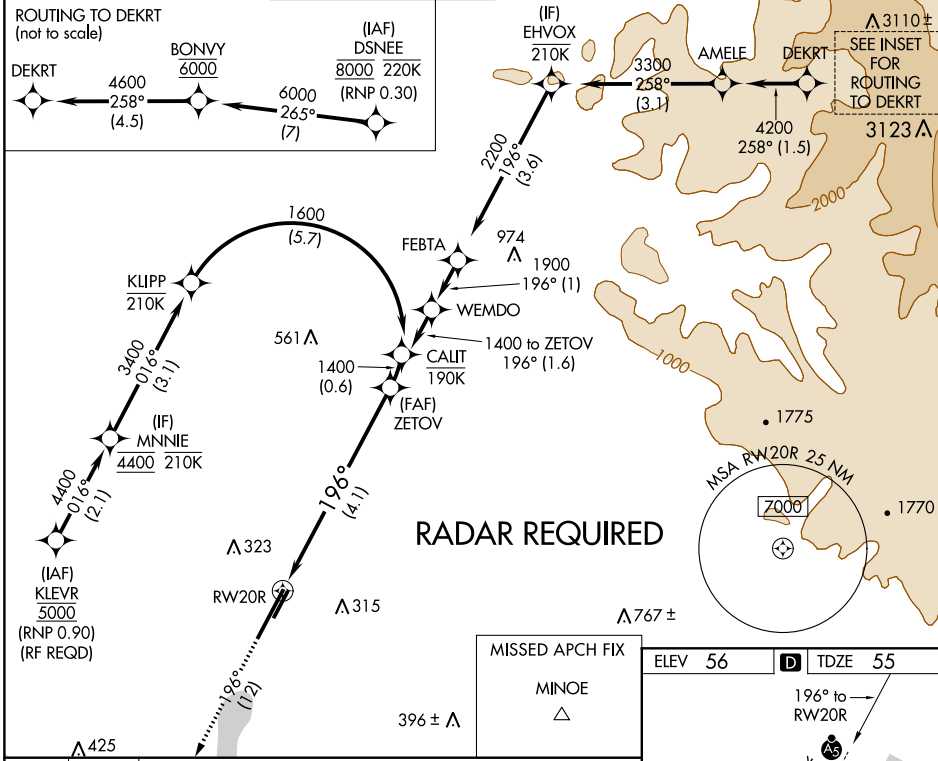
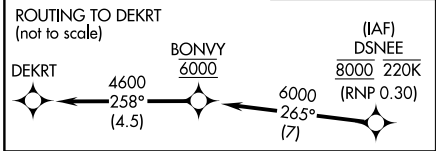
APP CRS	Rwy Idg	5701
196°	TDZE	55
	Apt Elev	56

▽ For uncompensated Baro-VNAV systems, procedure NA below 5°C (41°F) or above 54°C (130°F). GPS required.

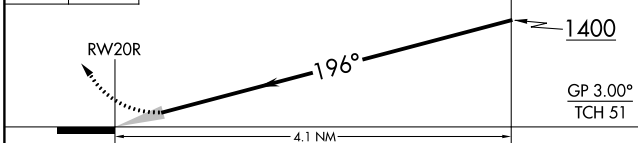
MALS

MISSED APPROACH: Climb to 3000 on track 196° to MINOE.

D-ATIS 126.0	SOCAL APP CON 121.3 263.1	JOHN WAYNE TOWER * 126.8 (CTAF) 343.625	GND CON (EAST) 120.8 (WEST) 132.25	CLNC DEL 118.0	CPDLC	UNICOM 122.95
------------------------	-------------------------------------	---	---	--------------------------	-------	-------------------------

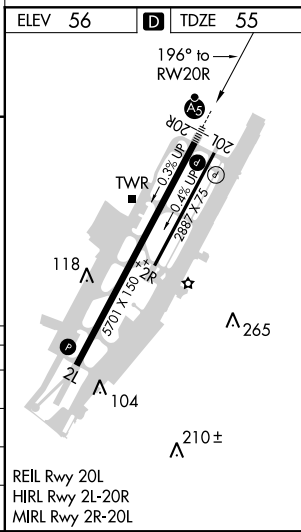


3000 ↑ MINOE △ VGSI and RNAV glidepath not coincident (VGSI Angle 3.00/TCH 63). See planview for multiple IF locations.



CATEGORY	A	B	C	D
RNP 0.11 DA		377/30	322 (400- $\frac{5}{8}$)	
RNP 0.15 DA		563-1 $\frac{1}{4}$	508 (600-1 $\frac{1}{4}$)	
RNP 0.30 DA		619-1 $\frac{1}{2}$	564 (600-1 $\frac{1}{2}$)	

AUTHORIZATION REQUIRED



REIL Rwy 20L
 HIRL Rwy 2L-20R
 MIRL Rwy 2R-20L

SW-3, 25 MAR 2021 to 22 APR 2021

SW-3, 25 MAR 2021 to 22 APR 2021