


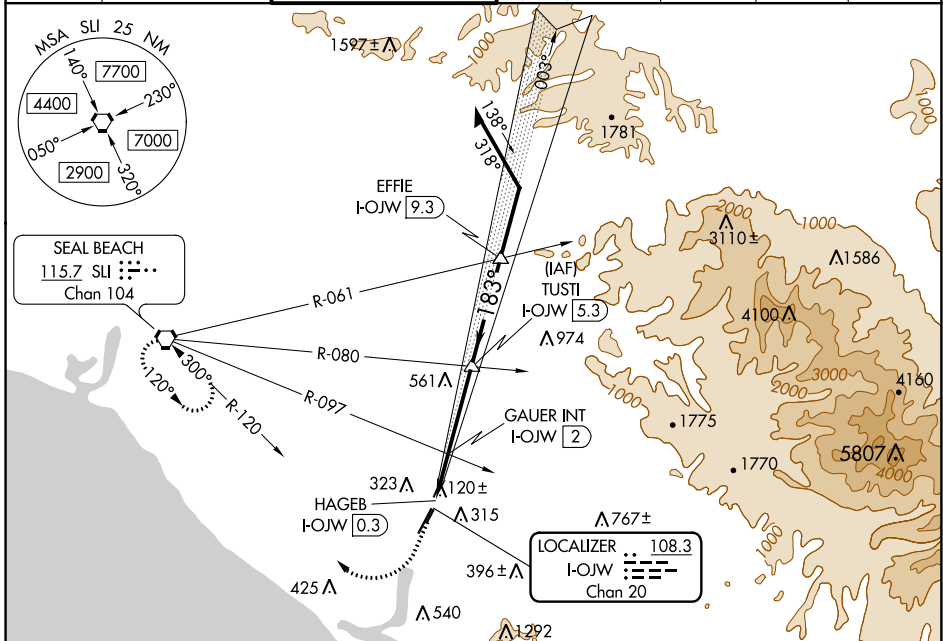
LOC/DME I-OJW <b>108.3</b> Chan 20	APP CRS <b>183°</b>	Rwy Idg 5701
		TDZE 55
		Apt Elev 56

# LDA/DME RWY 20R

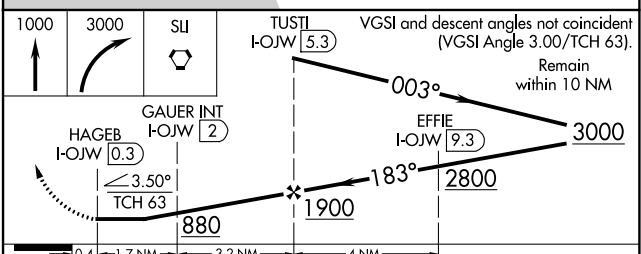
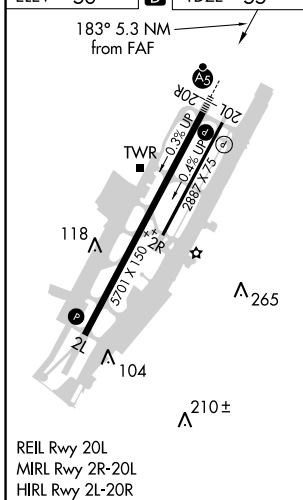
JOHN WAYNE AIRPORT-ORANGE COUNTY (SNA)

<p><b>▼</b> When local altimeter not received, use Fullrenter altimeter setting and increase all MDA 40 feet and increase S-20R Cats C/D visibility to RVR 5000 and Circling Cat C visibility ¼ mile. Helicopter visibility reduction below RVR 4000 NA.</p>	<p><b>MALSR</b>  </p>	<p><b>MISSED APPROACH:</b> Climb to 1000 then climbing right turn to 3000 direct SLI VORTAC and hold.</p>
--	--	---

D-ATIS <b>126.0</b>	SOCAL APP CON <b>121.3 263.1</b>	<b>JOHN WAYNE TOWER *</b> <b>126.8</b> (CTAF) <b>343.625</b>	GND CON (EAST) <b>120.8</b> (WEST) <b>132.25</b>	CLNC DEL <b>118.0</b>	CPDLC	UNICOM <b>122.95</b>
------------------------	-------------------------------------	---	---	--------------------------	-------	-------------------------



ELEV 56	<b>D</b>	TDZE 55
---------	----------	---------



CATEGORY	A	B	C	D
S-20R	400/40		345 (400-¾)	
<b>C</b> CIRCLING	640-1	584 (600-1)	840-2¼ 784 (800-2¼)	1160-3 1104 (1200-3)

# LDA/DME RWY 20R

SW-3, 25 MAR 2021 to 22 APR 2021

SW-3, 25 MAR 2021 to 22 APR 2021