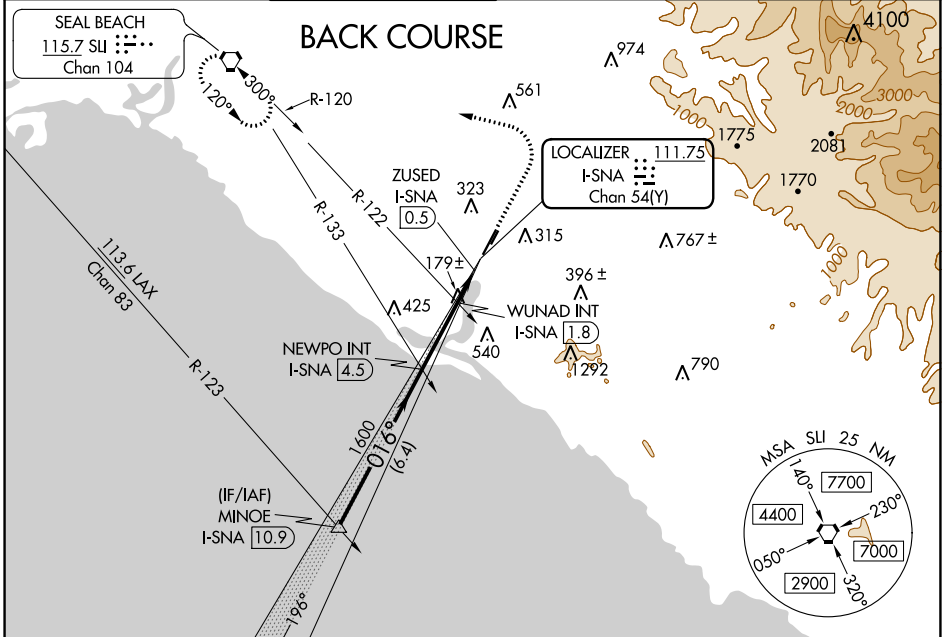


LOC/DME I-SNA 111.75 Chan 54(Y)	APP CRS 016°	Rwy Idg 5701 TDZE 56 Apt Elev 56
----------------------------------------------	------------------------	-------------------------------------------------------------

LOC BC RWY 2L

JOHN WAYNE AIRPORT-ORANGE COUNTY (SNA)

<p>▽ When local altimeter setting not received, use Fullerton altimeter setting and increase all MDA 40 feet, increase S-2L Cats C and D and Circling Cat C visibility ¼ SM, and increase WUNAD fix S-2L Cats C and D visibility ½ SM; Circling Cat C visibility ¼ SM.</p>	<p>MISSED APPROACH: Climb to 800 then climbing left turn to 2600 direct SLI VORTAC and hold.</p>					
	D-ATIS 126.0	SOCAL APP CON 121.3 263.1	JOHN WAYNE TOWER* 126.8 (CTAF) 0 343.625	GND CON (EAST) 120.8 (WEST) 132.25	CLNC DEL 118.0	CPDLC



<p>ELEV 56 D TDZE 56</p> <p>REIL Rwy 20L MIRL Rwy 2R-20L HIRL Rwy 2L-20R</p>				
<p>VGSI and descent angles not coincident (VGSI Angle 3.00/TCH 72). *600 when using Fullerton altimeter setting.</p>				
<p>MINOE I-SNA 10.9</p> <p>NEWPO INT I-SNA 4.5</p> <p>WUNAD INT I-SNA 1.8</p> <p>ZUSED I-SNA 0.5</p> <p>I-SNA DME ANTENNA</p>				
<p>3000 — 016° — 1600 — 3.00° TCH 55 — *560 — 016° — 2600</p> <p>Disregard GS indications.</p>				
<p>800 2600 SLI</p>				
CATEGORY	A	B	C	D
S-2L	560-1	504 (600-1)	560-1 3/8	504 (600-1 3/8)
C CIRCLING	640-1	584 (600-1)	840-2 1/4 784 (800-2 1/4)	1160-3 1104 (1200-3)
<p>WUNAD FIX MINIMUMS (DUAL VOR RECEIVERS OR DME REQUIRED)</p>				
S-2L	480-1	424 (500-1)	480-1 1/4	424 (500-1 1/4)
C CIRCLING	640-1	584 (600-1)	840-2 1/4 784 (800-2 1/4)	1160-3 1104 (1200-3)

<p>FAF to MAP 4 NM</p>					
Knots	60	90	120	150	180
Min:Sec	4:00	2:40	2:00	1:36	1:20

SW-3, 25 MAR 2021 to 22 APR 2021

SW-3, 25 MAR 2021 to 22 APR 2021