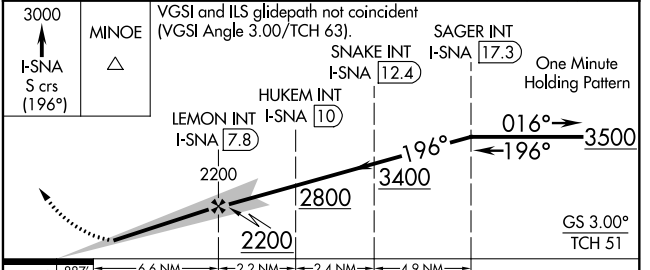
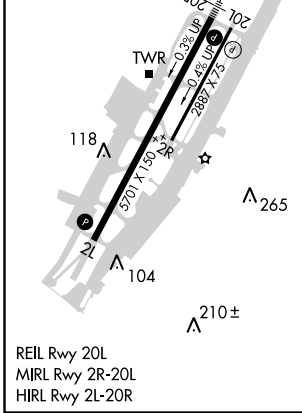
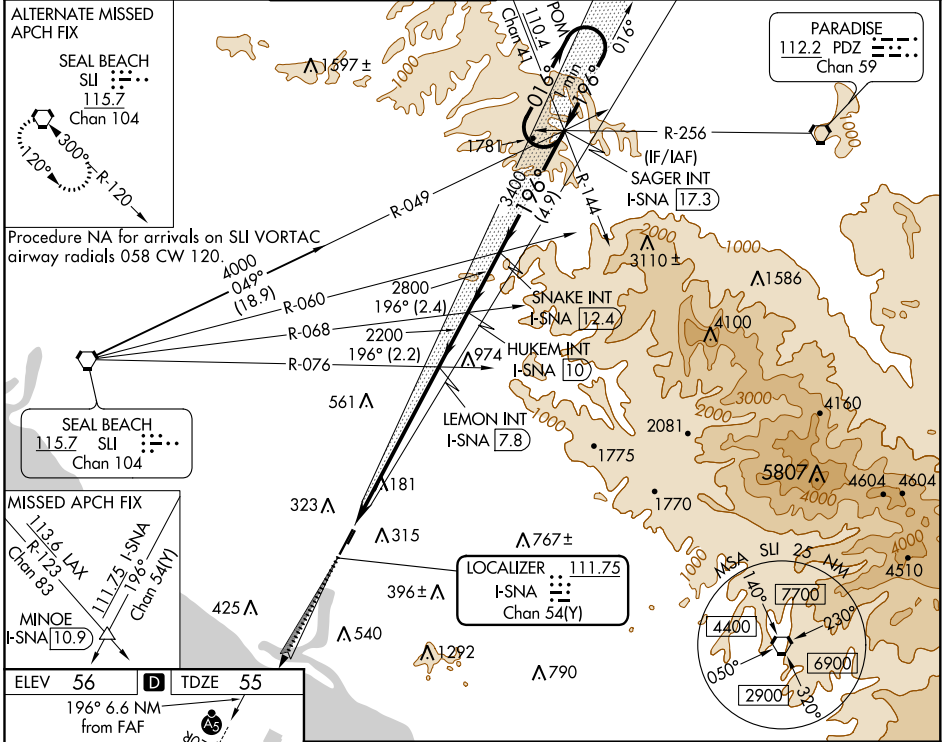


LOC/DME I-SNA 111.75 Chan 54(Y)	APP CRS 196°	Rwy Idg TDZE Apt Elev	5701 55 56
---	------------------------	-----------------------------	---------------------------------------

ILS RWY 20R (SA CAT I)

JOHN WAYNE AIRPORT-ORANGE COUNTY (SNA)

<p>Requires specific OPSPEC, MSPEC, or LOA approval and use of HUD to DH. Procedure NA when control tower closed.</p>	MALSR 	MISSED APPROACH: Climb to 3000 on I-SNA LOC south course (196°) to MINOE INT/I-SNA 10.9 DME.				
	D-ATIS 126.0	SOCAL APP CON 121.3 263.1	JOHN WAYNE TOWER ★ 126.8 (CTAF) 343.625	GND CON (EAST) 120.8 (WEST) 132.25	CLNC DEL 118.0	CPDLC



ELEV 56	D	TDZE 55		
196° 6.6 NM from FAF				
3000	MINOE	VGSI and ILS glidepath not coincident (VGSI Angle 3.00/TCH 63).		
I-SNA	S crs	(196°)		
SAGER INT	I-SNA	17.3		
SNAKE INT	I-SNA	12.4		
HUKEM INT	I-SNA	10		
LEMON INT	I-SNA	7.8		
One Minute Holding Pattern				
GS 3.00°	TCH 51			
CATEGORY	A	B	C	D
S-ILS 20R	RA 201/14 166 DA 221			

SA CATEGORY I ILS - SPECIAL AIRCREW & AIRCRAFT CERTIFICATION REQUIRED

SW-3, 25 MAR 2021 to 22 APR 2021

SW-3, 25 MAR 2021 to 22 APR 2021