

HAWWC THREE DEPARTURE (RNAV)

AL-377 (FAA)

SANTA ANA, CALIFORNIA

SW-3, 25 MAR 2021 to 22 APR 2021

TOP ALTITUDE:  
6000

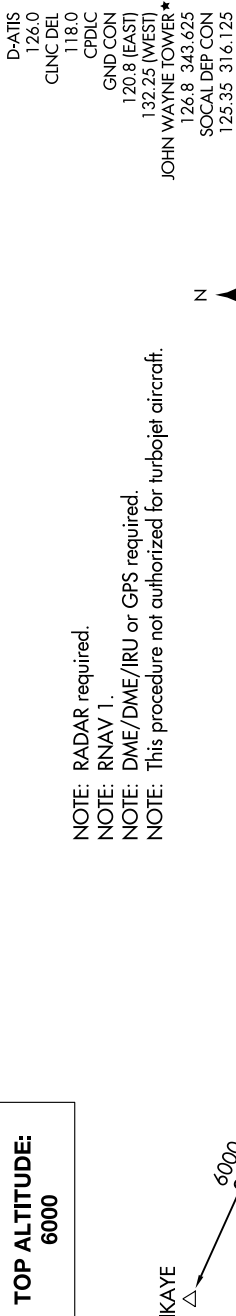
NOTE: RADAR required.

NOTE: RNAV 1.

NOTE: DME/DME/IRU or GPS required.

NOTE: This procedure not authorized for turbojet aircraft.

JOHN WAYNE TOWER\*  
126.8 343.625  
SOCAL DEP CON  
125.35 316.125



DEPARTURE ROUTE DESCRIPTION

TAKEOFF RUNWAY 2L: Climb heading 014° to 560, then left turn on heading 240° or as assigned by ATC for vectors to PIJIN, cross PIJIN at or above 4000, then on track 290° to cross HAWWC at or above 5000, thence . . . .

TAKEOFF RUNWAY 20R: Climb heading 194°, then on heading 210° or as assigned by ATC for vectors to PIJIN, cross PIJIN at or above 4000, then on track 290° to cross HAWWC at or above 5000, thence . . . .

. . . . on (transition). Maintain 6000. Expect higher altitude 10 minutes after departure.

IKAYE TRANSITION (HAWWC3.IKAYE)

TAKEOFF MINIMUMS  
Rwys 2R, 20L: NA-ATC.  
Rwy 2L: Standard.  
Rwy 20R: Standard with minimum climb of 270' per NM to 1300.

NOTE: Chart not to scale.