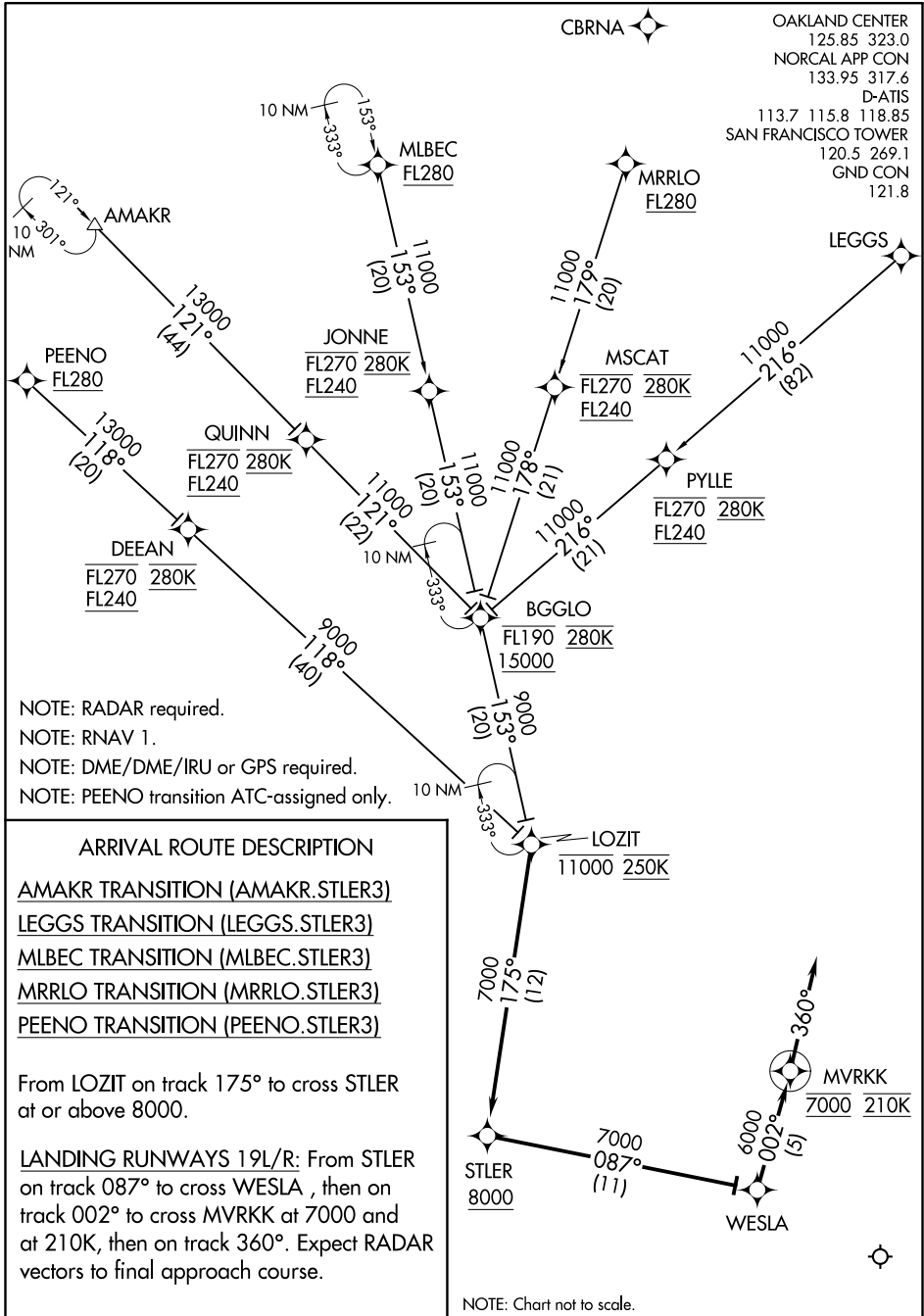


STLER THREE ARRIVAL (RNAV)

AL-375 (FAA)

SAN FRANCISCO INTL (SF'O)
SAN FRANCISCO, CALIFORNIA



ARRIVAL ROUTE DESCRIPTION

- AMAKR TRANSITION (AMAKR.STLER3)
- LEGGS TRANSITION (LEGGS.STLER3)
- MLBEC TRANSITION (MLBEC.STLER3)
- MRRLO TRANSITION (MRRLO.STLER3)
- PEENO TRANSITION (PEENO.STLER3)

From LOZIT on track 175° to cross STLER at or above 8000.

LANDING RUNWAYS 19L/R: From STLER on track 087° to cross WESLA, then on track 002° to cross MVRKK at 7000 and at 210K, then on track 360°. Expect RADAR vectors to final approach course.

NOTE: Chart not to scale.

STLER THREE ARRIVAL (RNAV)

SW-2, 25 MAR 2021 to 22 APR 2021

SW-2, 25 MAR 2021 to 22 APR 2021