

APP CRS	Rwy Idg	10704
104°	TDZE	10
	Apt Elev	13

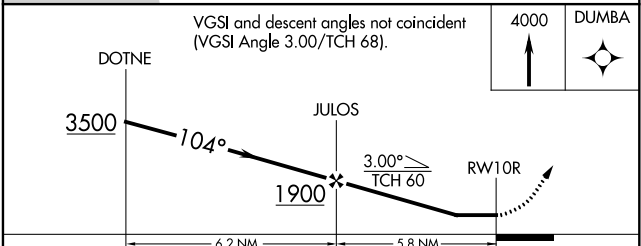
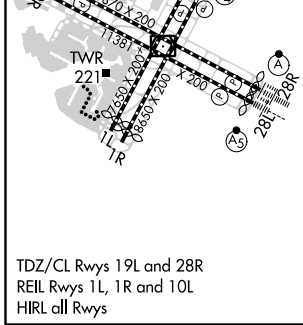
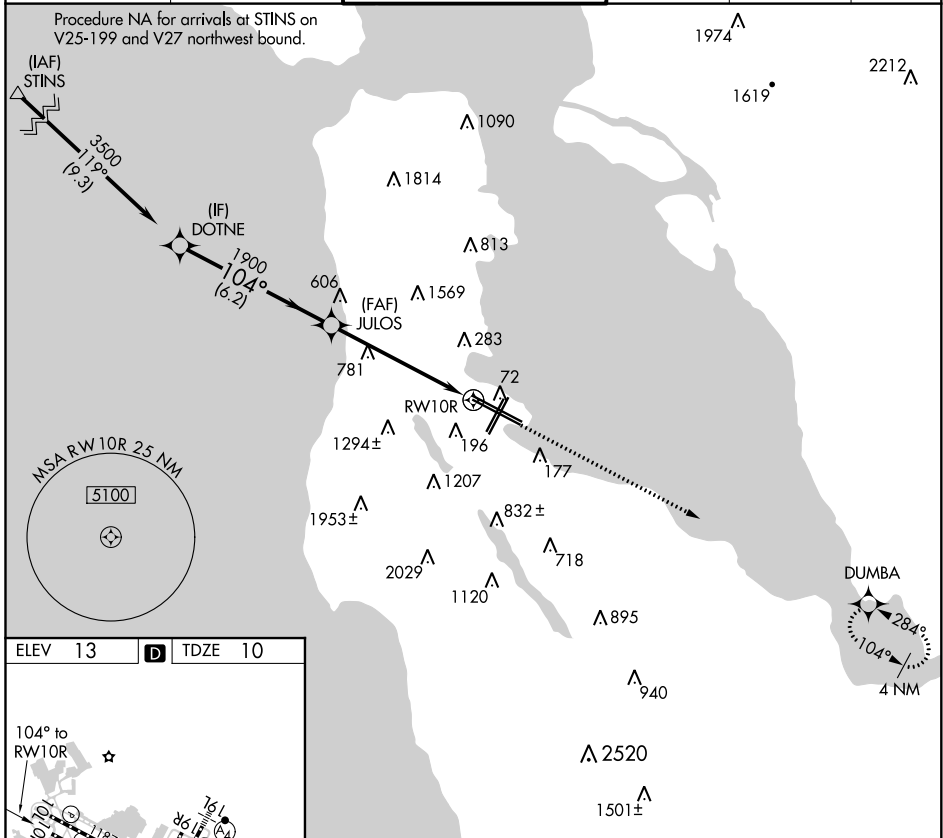
RNAV (GPS) Y RWY 10R

SAN FRANCISCO INTL (SFO)

⚠ DME/DME RNP-0.3 NA. When VGSI inop, procedure NA at night. Helicopter visibility reduction below RVR 5000 NA.

MISSED APPROACH: Climb to 4000 direct DUMBA and hold.

D-ATIS 113.7 115.8 118.85	NORCAL APP CON 134.5 338.2	SAN FRANCISCO TOWER 120.5 269.1	GND CON 121.8	CLNC DEL 118.2	CPDLC
---	--------------------------------------	---	-------------------------	--------------------------	-------



CATEGORY	A	B	C	D
RNAV MDA	1200/60 1190 (1200-1/4)	1200-1/2 1190 (1200-1/2)	1200-3	1190 (1200-3)

SW-2, 25 MAR 2021 to 22 APR 2021

SW-2, 25 MAR 2021 to 22 APR 2021