


WAAS CH 53415 W28B	APP CRS 284°	Rwy Idg 10275 TDZE 13 Apt Elev 13
--	------------------------	--

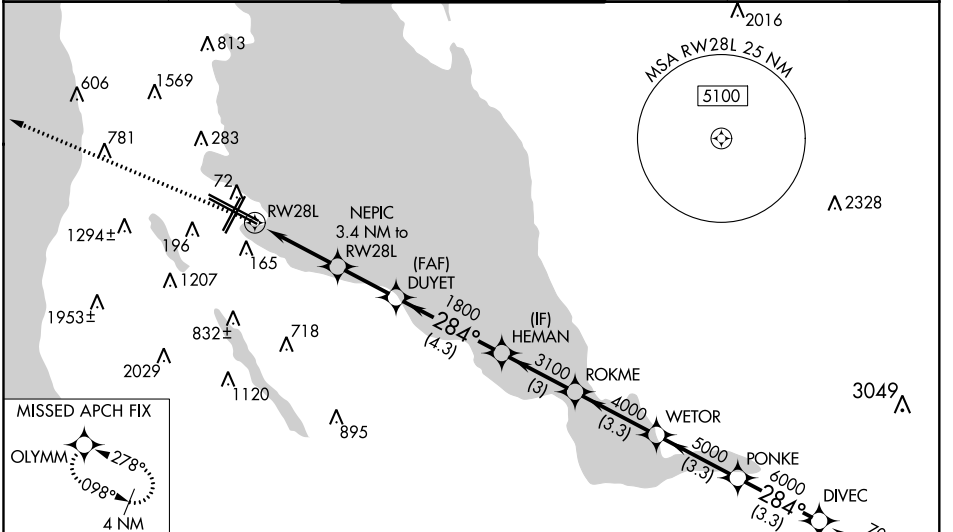
RNAV (GPS) PRM RWY 28L (CLOSE PARALLEL)

SAN FRANCISCO INTL (SFO)

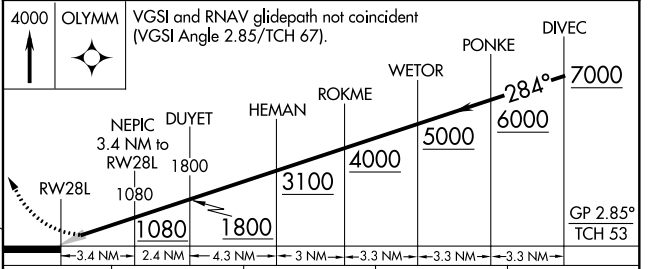
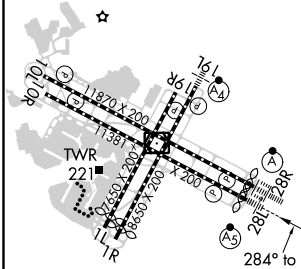
▼ DME/DME RNP-0.3 NA. Simultaneous approach authorized with LDA PRM RWY 28R and RNAV (GPS) PRM X RWY 28R. Use of FD or AP required during simultaneous operations. Dual VHF comm required. See additional requirements on AAUP. For inop ALS, increase LNAV/VNAV all Cats visibility to 2 SM. Rwy 28L and 28R separated by 750 feet centerline to centerline. For uncompensated Baro-VNAV systems, LNAV/VNAV NA below 3°C (38°F) or above 54°C (130°F).
RVR 1800 authorized with use of FD or AP or HUD to DA.

MALSR

MISSED APPROACH: Climb to 4000 direct OLYMM and hold, continue climb-in-hold to 4000.
*Misted approach requires minimum climb of 300 feet per NM to 1500.

D-ATIS 113.7 115.8 118.85	NORCAL APP CON 134.5 338.2	SAN FRANCISCO TOWER 120.5 269.1 PRM 125.15	GND CON 121.8	CLNC DEL 118.2	CPDLC
---	--------------------------------------	--	-------------------------	--------------------------	-------



ELEV 13	D	TDZE 13
---------	----------	---------



CATEGORY	A	B	C	D
LPV DA*#	213/24 200 (200-1/2)			
LPV DA	769-1 3/4 756 (800-1 3/4)			
LNAV/VNAV DA	754-1 3/4 741 (800-1 3/4)			

TDZ/CL Rws 19L and 28R
REIL Rws 1L, 1R and 10L
HIRL all Rws

SW-2, 25 MAR 2021 to 22 APR 2021

SW-2, 25 MAR 2021 to 22 APR 2021