

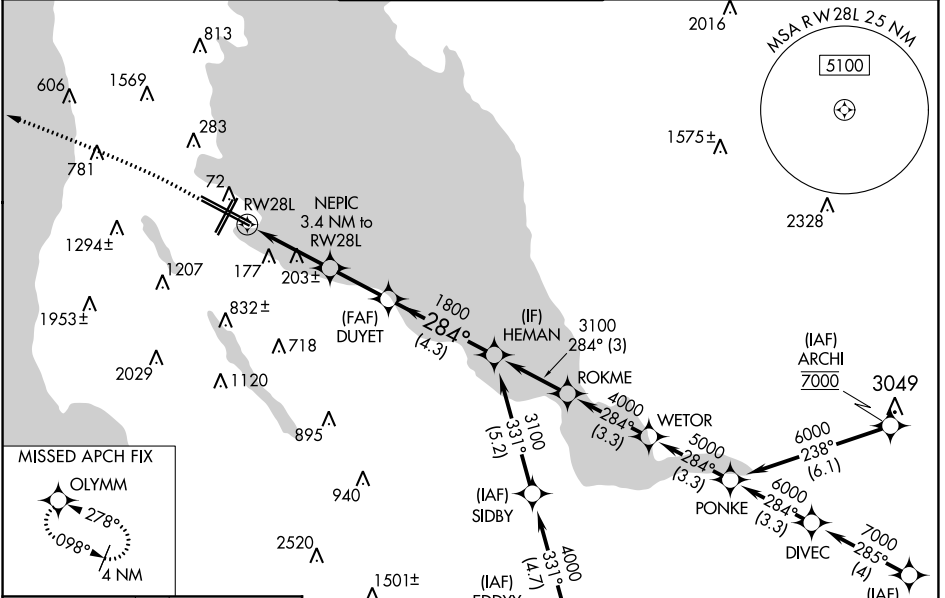
WAAS CH <b>53415</b> <b>W28B</b>	APP CRS <b>284°</b>	Rwy Idg <b>10275</b> TDZE <b>13</b> Apt Elev <b>13</b>
--	------------------------	--

# RNAV (GPS) RWY 28L

SAN FRANCISCO INTL (SFO)

RNP APCH. ▼ For uncompensated Baro-VNAV systems, LNAV/VNAV NA below 3°C or above 54°C. For inop ALS, increase LPV † all Cats visibility to 2½ SM, increase LNAV/VNAV all Cats visibility to 2 SM. Circling NA to Rwy 10L, 10R, 19L, and 19R. Circling Rwy 1L, 1R NA at night. #RVR 1800 authorized with use of FD or AP or HUD to DA.	MALSR 	MISSED APPROACH: Climb to 1020 then climbing left turn to 4000 direct OLYMM and hold, continue climb-in-hold to 4000. #Missed approach requires minimum climb of 330 feet per NM to 1600.
---	-----------	---

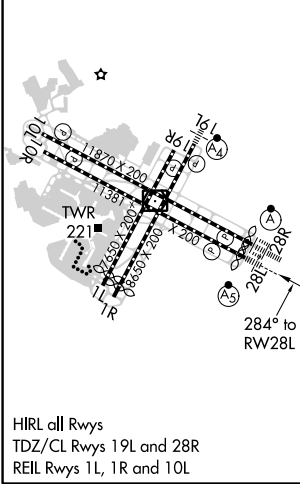
D-ATIS <b>113.7 115.8</b> <b>118.85</b>	NORCAL APP CON <b>134.5 338.2</b>	SAN FRANCISCO TOWER <b>120.5 269.1</b>	GND CON <b>121.8</b>	CLNC DEL <b>118.2</b>	CPDLC
---	--------------------------------------	---	-------------------------	--------------------------	-------



SW-2, 25 MAR 2021 to 22 APR 2021

SW-2, 25 MAR 2021 to 22 APR 2021

ELEV 13	<b>D</b>	TDZE 13
---------	----------	---------



1020	4000	OLYMM	VGSI and RNAV glidepath not coincident (VGSI Angle 2.85/TCH 67).	
*LNAV only			HEMAN	
		DUYET 1800	HEMAN 3100	
CATEGORY	A	B	C	D
LPV DA#	213/24		200 (200-½)	
LPV DA †	798-1¾		785 (800-1¾)	
LNAV/VNAV DA	770-1¾		757 (800-1¾)	
LNAV MDA	1020/40 1007 (1100-¾)	1020/55 1007 (1100-1)	1020-2½ 1007 (1100-2½)	
<b>C</b> CIRCLING	1020-1¼ 1007 (1100-1¼)	1020-1½ 1007 (1100-1½)	1560-3 1547 (1600-3)	NA