

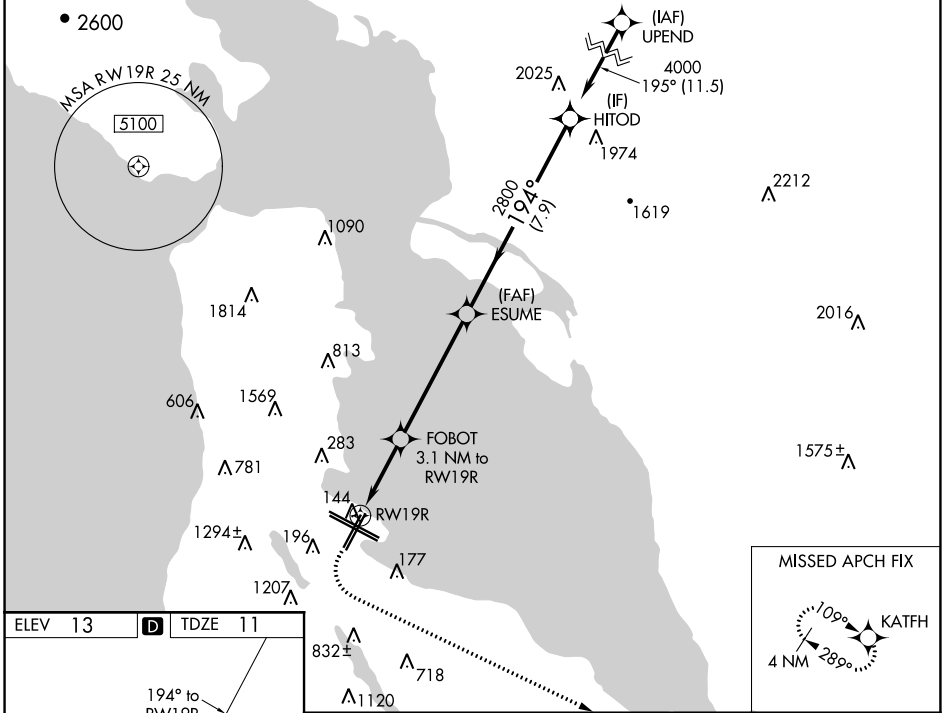
WAAS CH 53533 W19B	APP CRS 194°	Rwy Idg TDZE Apt Elev	7650 11 13
--	------------------------	-----------------------------	---------------------------------------

RNAV (GPS) RWY 19R

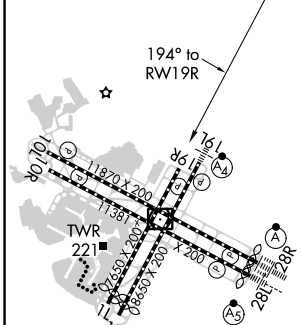
SAN FRANCISCO INTL (SFO)

RNP APCH.	<p>▼ LNAV procedure NA during simultaneous operations. For uncompensated Baro-VNAV systems, LNAV/VNAV NA below 3°C or above 42°C. Simultaneous approach authorized. Simultaneous operations require use of vertical guidance; maintain last assigned altitude until established on glidepath. Simultaneous approach NA below 28°C (52°F).</p>	<p>MISSED APPROACH: Climb to 600 then climbing left turn to 3000 direct KATFH and hold.</p>
-----------	---	---

D-ATIS 113.7 115.8 118.85	NORCAL APP CON 134.5 338.2	SAN FRANCISCO TOWER 120.5 269.1	GND CON 121.8	CLNC DEL 118.2	CPDLC
---	--------------------------------------	---	-------------------------	--------------------------	-------



ELEV 13	D	TDZE 11
---------	----------	---------



600	3000	KATFH	HITOD
*LNAV only.		FOBOT 3.1 NM to RWY 19R	
*1.9 NM to RWY 19R		ESUME 2800	4000
1100*		2800	GP 3.15° TCH 55
-1.9 NM		-1.2 NM	-5.1 NM
			-7.9 NM
CATEGORY	A	B	C
LPV DA	382/55		371 (400-1)
LNAV/VNAV DA	449-1¼		438 (500-1¼)
LNAV MDA	660/55	649 (700-1)	660-1⅞ 649 (700-1⅞)

TDZ/CL Rwy 19L and 28R
REIL Rwy 1L, 1R and 10L
HIRL all Rwy

SW-2, 25 MAR 2021 to 22 APR 2021

SW-2, 25 MAR 2021 to 22 APR 2021